


Elstree Electricity Substation

Restricted byway Bushy 038



X:\JOBS\7533_Elstree_Solar_Farm\docs\LVA_Report\Figures\7533_PP_001.indd

Representative Viewpoint 1 (Left) - Restricted byway from A41 (Bushy 036)

 Approximate visibility of the Site
(Actual development area may be less than that shown)

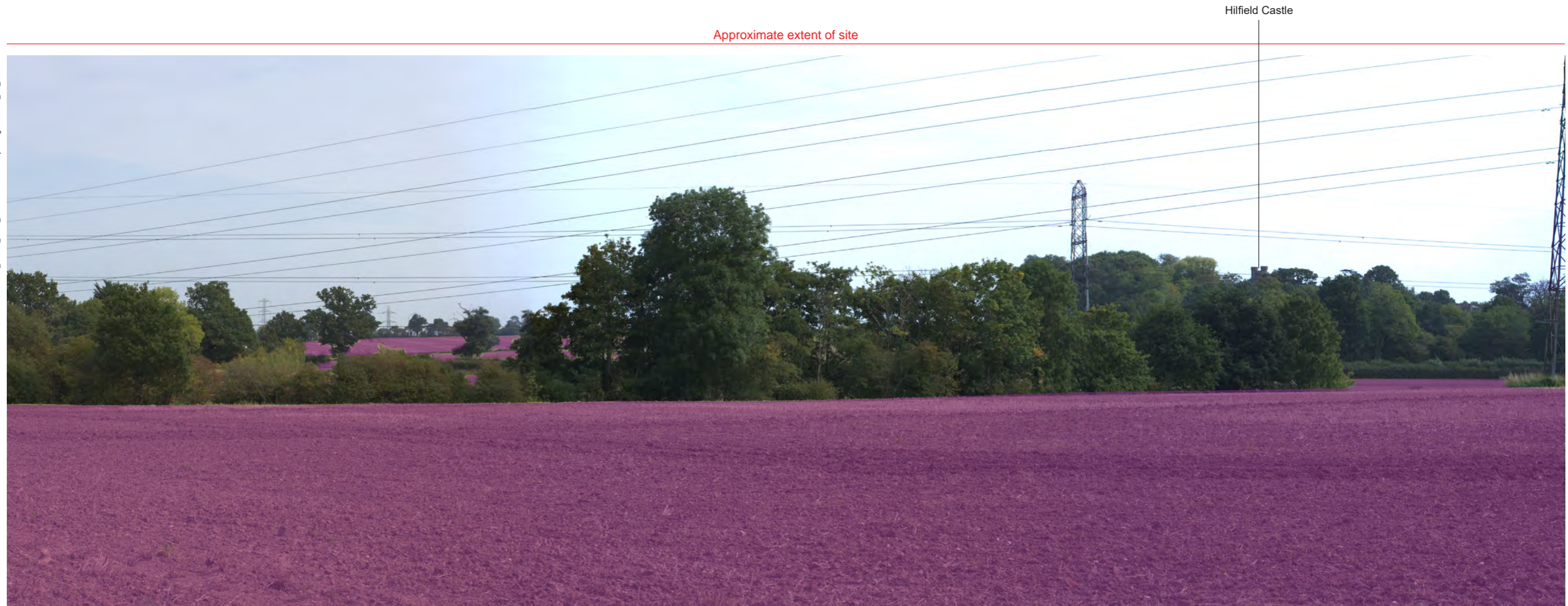
ISSUED BY	Oxford	t: 01865 887050	
DATE	Nov 2020	DRAWN	SG
PAGE SIZE	420mm x 297mm	CHECKED	BC
STATUS	Final	APPROVED	AK

DWG. NO. 7533_PP_001_L

PROJECT TITLE
HILFIELD SOLAR FARM AND
BATTERY STORAGE

DRAWING TITLE
Figure 7.1: Photograph Panel 1 (Left)
Representative Viewpoint 1

X:\Jobs\7533_Elstree_Solar_Farm\6docs\LVIA_Report\Figures\7533_PP_001.indd



Representative Viewpoint 1 (Centre) - Restricted byway from A41 (Bushy 036)

View from within the western site parcel (Field 1) looking east toward Elstree Aerodrome. The land gently undulates before rising up to Elstree Aerodrome. Agricultural land bounded by mature field boundaries and hedgerows is characteristic of the Site and locality. Views of Hilfield Castle can be seen to the right of the view, whilst vegetation lining Hilfield Lane filters views in the middleground.

Figure 9.1 provides a photomontage of the Proposed Development from this location.

This location is within the Hilfield Brook Green Wedge, an substantial tract of land free of development from the A41 to Elstree Aerodrome. Panels would be visible in the foreground to the left hand side and at the periphery of the view on the right hand side, set well back from the path and behind additional screen planting. Views to Hilfield Castle would remain.

The scale of change is assessed to be **Large**.

ISSUED BY Oxford t: 01865 887050
 DATE Nov 2020 DRAWN SG
 PAGE SIZE 420mm x 297mm CHECKED BC
 STATUS Final APPROVED AK

DWG. NO. 7533_PP_001_C

Camera Location (OS Grid Reference): 514765 E 196226 N
 Ground Level (mAOD): 82.8m
 Direction of View: bearing from North (0°): 64°
 Distance to Site: 0m
 Horizontal Field of View: 180° (Cylindrical projection)
 Paper Size: 420mm x 297mm (A3)

Enlargement Factor: TBC
 Visualisation Type: Type 1 (for context)
 Photo Date / Time: 16/09/2020 11:30
 Camera Model and Sensor Format: Canon EOS 6D, FFS
 Lens Make, Model and Focal Length: Canon EF50mm f/1.8 STM
 Height of Camera Lens above Ground (mAOD): 1.5m


PROJECT TITLE
**HILFIELD SOLAR FARM AND
 BATTERY STORAGE**

DRAWING TITLE
**Figure 7.1: Photograph Panel 1 (Centre)
 Representative Viewpoint 1**



X:\JOBS\7533_Elfrree_Solar_Farm\docs\LVIA_Report\Figures\7533_PP_001.indd

Representative Viewpoint 1 (Right) - Restricted byway from A41 (Bushy 036)

 Approximate visibility of the Site
(Actual development area may be less than that shown)

ISSUED BY	Oxford	t: 01865 887050	
DATE	Nov 2020	DRAWN	SG
PAGE SIZE	420mm x 297mm	CHECKED	BC
STATUS	Final	APPROVED	AK

DWG. NO. 7533_PP_001_R

PROJECT TITLE
HILFIELD SOLAR FARM AND
BATTERY STORAGE

DRAWING TITLE
Figure 7.1: Photograph Panel 1 (Right)
Representative Viewpoint 1


Hilfield Farm

Approximate extent of site



X:\JOBS\7533_Elfrree_Solar_Farm\docs\LVA_Report\Figures\7533_PP_002.indd

Representative Viewpoint 2 (Left) - Restricted byway from Hilfield Lane (Bushy 038)

 Approximate visibility of the Site
(Actual development area may be less than that shown)

ISSUED BY	Oxford	t: 01865 887050	
DATE	Nov 2020	DRAWN	SG
PAGE SIZE	420mm x 297mm	CHECKED	BC
STATUS	Final	APPROVED	AK

DWG. NO. 7533_PP_002_L

PROJECT TITLE
HILFIELD SOLAR FARM AND
BATTERY STORAGE

DRAWING TITLE
Figure 7.2: Photograph Panel 2 (Left)
Representative Viewpoint 2

X:\JOBS\7533_Elstone_Solar_Farm\6docs\LVIA_Report\Figures\7533_PP_002.indd



Representative Viewpoint 2 (Right) - Restricted byway from Hilfield Lane (Bushy 038)

View looking east from Restricted Byway Bushey 038 within the western site parcel (Field 5).

The scale of change would be **Large**.

The land rises to Elstree Aerodrome which forms the main plateau of the Borehamwood Plateau character area in which the Site lies. The view is characterised by the arable farmland with mature trees. The field boundary vegetation is less strong in this part of the Site although the woodland of Hilfield Castle can be seen to the right of the view which forms an effective visual screen to views from the south.

Figure 9.2 provides a photomontage of the view.

Located within the Hilfield Brook Green Wedge the foreground of this view would remain undeveloped and managed as tussocky grassland with wildflowers. Views of panels would be possible in the middleground to the left behind proposed screen planting.

ISSUED BY Oxford t: 01865 887050
 DATE Nov 2020 DRAWN SG
 PAGE SIZE 420mm x 297mm CHECKED BC
 STATUS Final APPROVED AK

DWG. NO. 7533_PP_002_R

Camera Location (OS Grid Reference): 514977 E 196422 N
 Ground Level (mAOD): 82.8m
 Direction of View: bearing from North (0°): 50°
 Distance to Site: 0m
 Horizontal Field of View: 120° (Cylindrical projection)
 Paper Size: 420mm x 297mm (A3)

Enlargement Factor: TBC
 Visualisation Type: Type 1 (for context)
 Photo Date / Time: 16/09/2020 11:45
 Camera Model and Sensor Format: Canon EOS 6D, FFS
 Lens Make, Model and Focal Length: Canon EF50mm f/1.8 STM
 Height of Camera Lens above Ground (mAOD): 1.5m

PROJECT TITLE
**HILFIELD SOLAR FARM AND
 BATTERY STORAGE**

DRAWING TITLE
**Figure 7.2: Photograph Panel 2 (Right)
 Representative Viewpoint 2**



X:\JOBS\7533_Elstree_Solar_Farm\docs\LVA_Report\Figures\7533_PP_003.indd

Representative Viewpoint 3 (Left) - Restricted Byway to Elstree Aerodrome (Bushey 038)

Approximate extent of the Site
(Actual development area may be less than that shown)

ISSUED BY	Oxford	t: 01865 887050	
DATE	Nov 2020	DRAWN	SG
PAGE SIZE	420mm x 297mm	CHECKED	BC
STATUS	Final	APPROVED	AK

DWG. NO. 7533_PP_003_L

PROJECT TITLE
**HILFIELD SOLAR FARM AND
BATTERY STORAGE**

DRAWING TITLE
**Figure 7.3: Photograph Panel 3 (Left)
Representative Viewpoint 3**

ISKCON Hare Krishna Temple



X:\Jobs\7533_Elstone_Solar_Farm\6docs\LVIA_Report\Figures\7533_PP_003.indd

Representative Viewpoint 3 (Right) - Restricted Byway to Elstree Aerodrome (Bushey 038)

This view is from just outside the western site parcel looking northwest back across the bowl landscape characteristic of the western site parcel. The flatter, slightly undulating Field 1 of the western site parcel is largely screened from view. Elstree Substation can be seen in the foreground with middle distance views to tall buildings in Watford beyond. The strong vegetative network characteristic of the area can be also be appreciated.

Figure 9.3 provides a photomontage of this view.

The Proposed Development would be seen in the middleground, wrapped within the bowl landscape of the western site parcel. Views of the substation and battery storage would also be possible. The reinstatement of the hedgerow in the middleground would filter and screen close range views over time but middle distance views are likely to remain as would longer distance views to Watford.

The scale of change is assessed as **Large**.

ISSUED BY Oxford t: 01865 887050
 DATE Nov 2020 DRAWN SG
 PAGE SIZE 420mm x 297mm CHECKED BC
 STATUS Final APPROVED AK

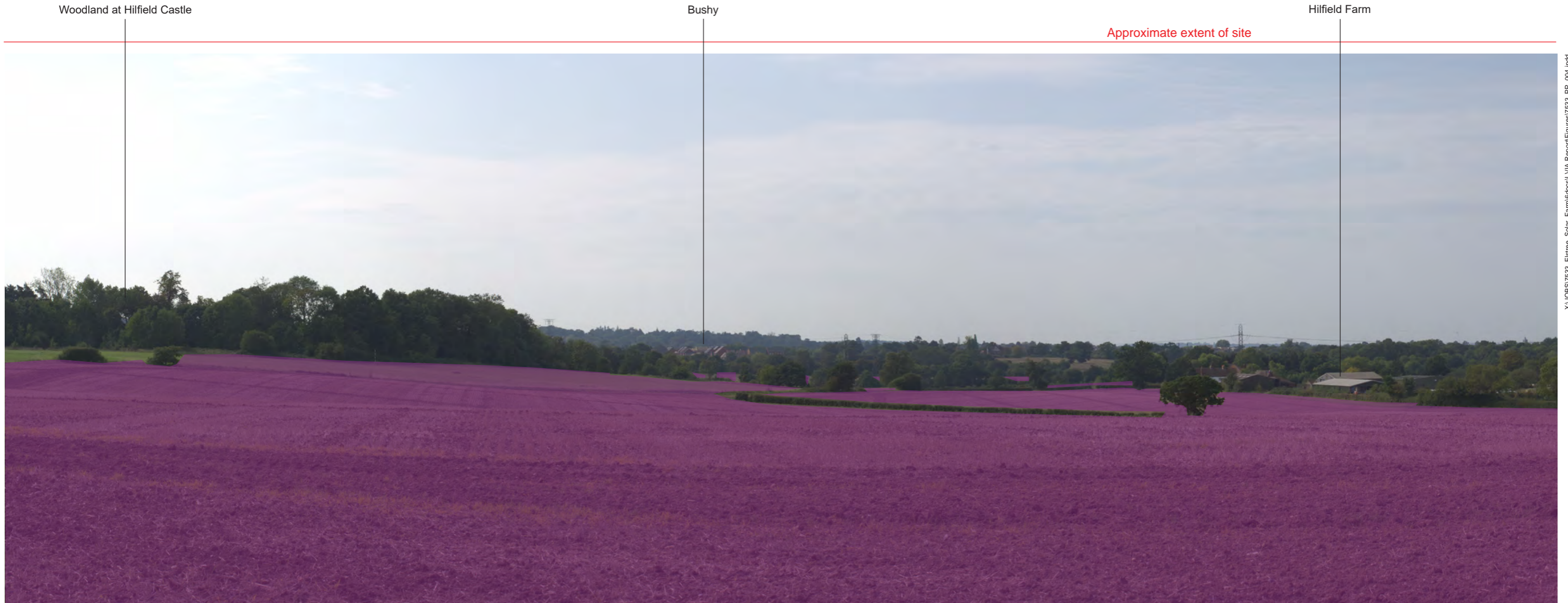
DWG. NO. 7533_PP_003_R

Camera Location (OS Grid Reference): 515356 E 196402 N
 Ground Level (mAOD): 99.7m
 Direction of View: bearing from North (0°): 340°
 Distance to Site: 107m
 Horizontal Field of View: 120° (Cylindrical projection)
 Paper Size: 420mm x 297mm (A3)

Enlargement Factor: TBC
 Visualisation Type: Type 1 (for context)
 Photo Date / Time: 16/09/2020 12:00
 Camera Model and Sensor Format: Canon EOS 6D, FFS
 Lens Make, Model and Focal Length: Canon EF50mm f/1.8 STM
 Height of Camera Lens above Ground (mAOD): 1.5m

PROJECT TITLE
**HILFIELD SOLAR FARM AND
 BATTERY STORAGE**

DRAWING TITLE
**Figure 7.3: Photograph Panel 3 (Right)
 Representative Viewpoint 3**



X:\JOBS\7533_Elfrree_Solar_Farm\docs\LVIA_Report\Figures\7533_PP_004.indd

Representative Viewpoint 4 (Left) - Footpath to Letchmore Heath (Aldenham 014)

Approximate visibility of the Site
(Actual development area may be less than that shown)

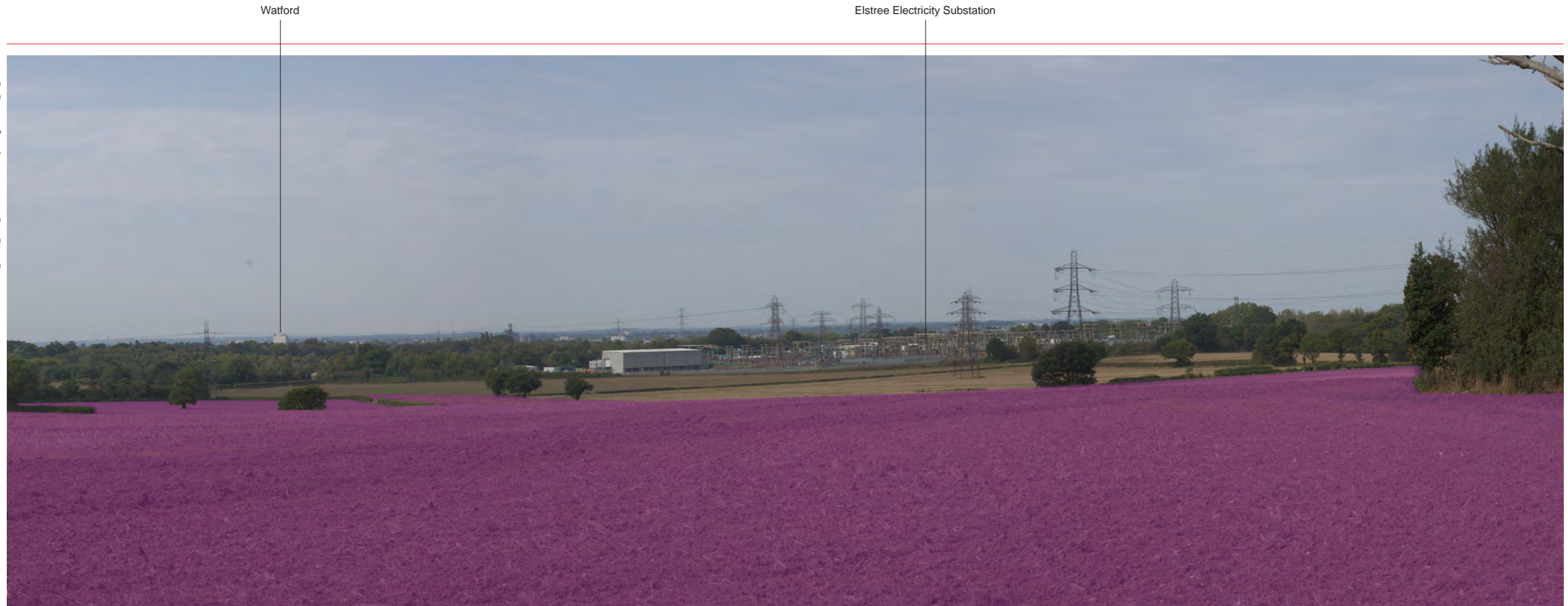
ISSUED BY	Oxford	t: 01865 887050	
DATE	Nov 2020	DRAWN	SG
PAGE SIZE	420mm x 297mm	CHECKED	BC
STATUS	Final	APPROVED	AK

DWG. NO. 7533_PP_004_L

PROJECT TITLE
**HILFIELD SOLAR FARM AND
BATTERY STORAGE**

DRAWING TITLE
**Figure 7.4: Photograph Panel 4 (Left)
Representative Viewpoint 4**

X:\JOBS\7533_Elstree_Solar_Farm\6docs\LVIA Report\Figures\7533_PP_004.indd



Representative Viewpoint 4 (Right) - Footpath to Letchmore Heath (Aldenham 014)

View from footpath Aldenham 014 on the eastern boundary of the western site parcel (Field 5) looking west. The bowl topography of the western site parcel can be seen falling gently to Hilfield Lane where built form along Hilfield Lane and in the middle distance at Watford and Bushey can be seen. Elstree sustation is a notable feature in the view as is the strong vegetative network of the locality.

The Proposed Development would be notable in this view, set back from the footpath behind planting, and obscuring middle distance views currently available.

The scale of change would be **Large**.

ISSUED BY Oxford t: 01865 887050
 DATE Nov 2020 DRAWN SG
 PAGE SIZE 420mm x 297mm CHECKED BC
 STATUS Final APPROVED AK

DWG. NO. 7533_PP_004_R

Camera Location (OS Grid Reference): 515504 E 196751 N
 Ground Level (mAOD): 97.7m
 Direction of View: bearing from North (0°): 256°
 Distance to Site: 0m
 Horizontal Field of View: 120° (Cylindrical projection)
 Paper Size: 420mm x 297mm (A3)

Enlargement Factor: TBC
 Visualisation Type: Type 1 (for context)
 Photo Date / Time: 16/09/2020 12:40
 Camera Model and Sensor Format: Canon EOS 6D, FFS
 Lens Make, Model and Focal Length: Canon EF50mm f/1.8 STM
 Height of Camera Lens above Ground (mAOD): 1.5m

PROJECT TITLE
**HILFIELD SOLAR FARM AND
 BATTERY STORAGE**


DRAWING TITLE
**Figure 7.4: Photograph Panel 4 (Right)
 Representative Viewpoint 4**

Approximate extent of site



X:\JOBS\7533_Elfrree_Solar_Farm\docs\LVA_Report\Figures\7533_PP_005.indd

Representative Viewpoint 5 (Left) - Letchmore Heath (Footpath Aldenham 014)

 Approximate visibility of the Site
(Actual development area may be less than that shown)

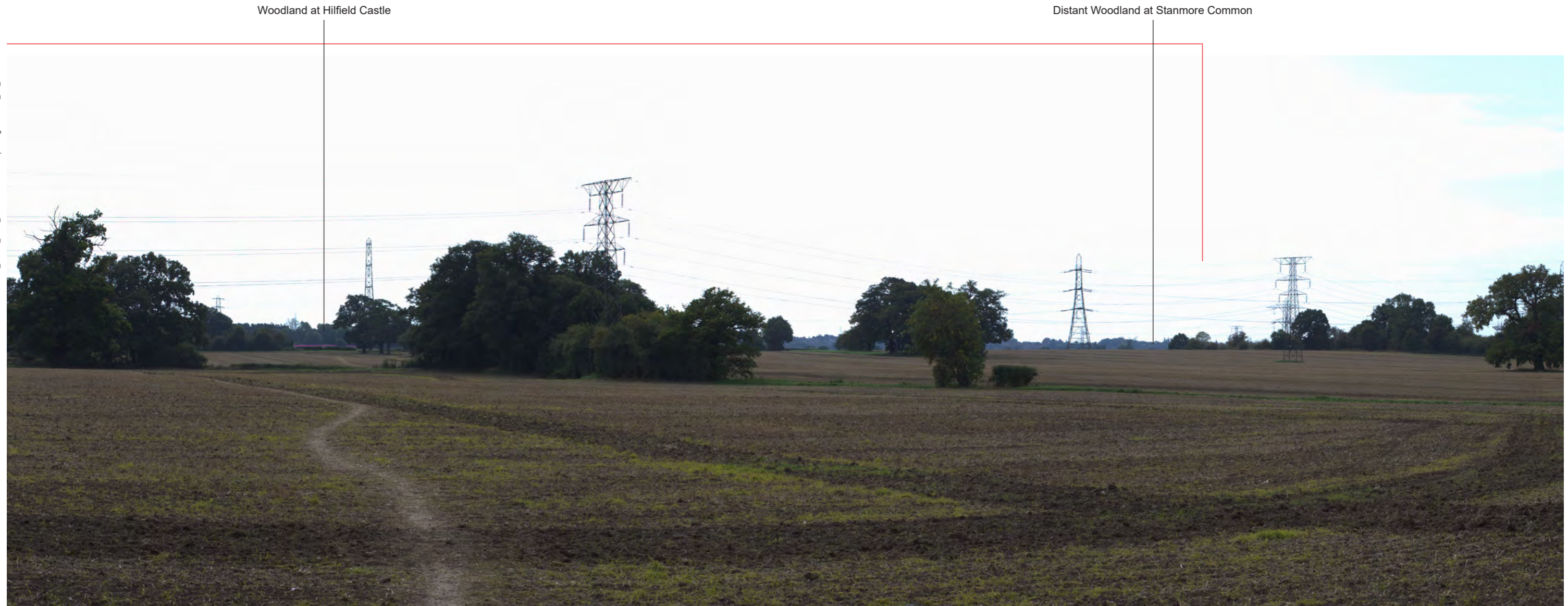
ISSUED BY	Oxford	t: 01865 887050	
DATE	Nov 2020	DRAWN	SG
PAGE SIZE	420mm x 297mm	CHECKED	BC
STATUS	Final	APPROVED	AK

DWG. NO. 7533_PP_005_L

PROJECT TITLE
HILFIELD SOLAR FARM AND
BATTERY STORAGE

DRAWING TITLE
Figure 7.5: Photograph Panel 5 (Left)
Representative Viewpoint 5

X:\Jobs\7533_Elstone_Solar_Farm\6docs\LVIA_Report\Figures\7533_PP_005.indd



Representative Viewpoint 5 (Right) - Letchmore Heath (Footpath Aldenham 014)

View from Footpath Aldenham 014 on the settlement edge of Letchmore Heath looking south toward the western site parcel. The composition is characteristic of the Borehamwood and Aldenham Plateaus, comprising a gently undulating agricultural landscape delineated by a network of field hedgerows and small copses.

Only glimpses through to small sections of Field 5 are possible as a result of intervening vegetation and falling bowl topography, which falls southward out of view from this location. Additional planting is proposed along the northern boundary of the western site parcel (Fields 4 and 5) to further increase screening.

Glimpsed and filtered views to solar panels in Field 5 would be possible where they would form a small feature within the view. The majority of the Proposed Development would not be visible.

The scale of change would be **Small**.

ISSUED BY	Oxford	t: 01865 887050
DATE	Nov 2020	DRAWN SG
PAGE SIZE	420mm x 297mm	CHECKED BC
STATUS	Final	APPROVED AK

DWG. NO. 7533_PP_005_R

Camera Location (OS Grid Reference):	515278 E 197576 N
Ground Level (mAOD):	77.1m
Direction of View: bearing from North (0°):	165°
Distance to Site:	549m
Horizontal Field of View:	120° (Cylindrical projection)
Paper Size:	420mm x 297mm (A3)

Enlargement Factor:	TBC
Visualisation Type:	Type 1 (for context)
Photo Date / Time:	16/09/2020 13:00
Camera Model and Sensor Format:	Canon EOS 6D, FFS
Lens Make, Model and Focal Length:	Canon EF50mm f/1.8 STM
Height of Camera Lens above Ground (mAOD):	1.5m

PROJECT TITLE
**HILFIELD SOLAR FARM AND
 BATTERY STORAGE**

DRAWING TITLE
**Figure 7.5: Photograph Panel 5 (Right)
 Representative Viewpoint 5**

Dwellings on Watling Street


Approximate extent of site

Slade Farm



X:\JOBS\7533_Elfrree_Solar_Farm\docs\LVIA_Report\Figures\7533_PP_006.indd

Representative Viewpoint 6 (Left) - Marsh Cottages (Footpath Aldenham 040)

 Approximate visibility of the Site
(Actual development area may be less than that shown)

ISSUED BY	Oxford	t: 01865 887050	
DATE	Nov 2020	DRAWN	SG
PAGE SIZE	420mm x 297mm	CHECKED	BC
STATUS	Final	APPROVED	AK

DWG. NO. 7533_PP_006_L

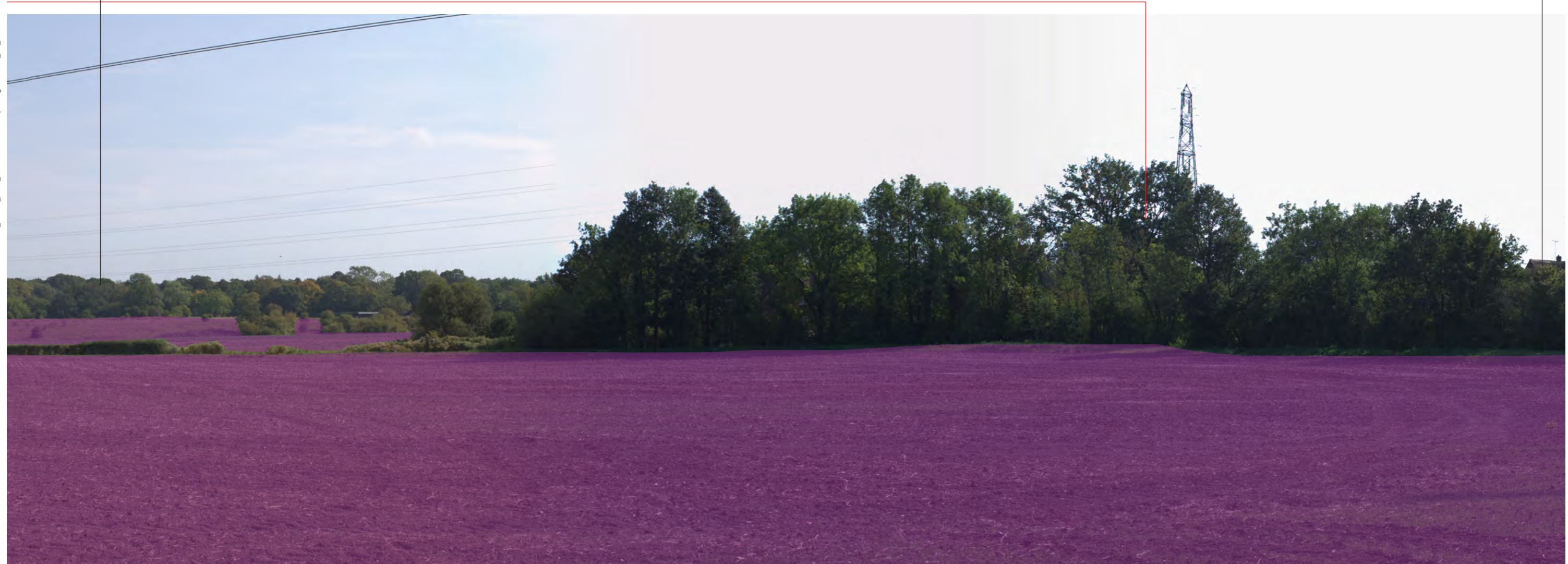
PROJECT TITLE
HILFIELD SOLAR FARM AND
BATTERY STORAGE

DRAWING TITLE
Figure 7.6: Photograph Panel 6 (Left)
Representative Viewpoint 6

Woodland at Aldenham Park

Dwellings on Aldenham Road

X:\Jobs\7533_Elstrree_Solar_Farm\6docs\LVIA Report\Figures\7533_PP_006.indd



Representative Viewpoint 6 (Right) - Marsh Cottages (Footpath Aldenham 040)

View looking eastward from Footpath Aldenham 040 within the Site. The undulating landscape with strong vegetative network of woodland blocks, field boundaries and scrubby vegetation of the Aldenham Brook can be seen in the view. Powerlines and Slades Farm are also notable features.

The foreground of this view would be occupied by the proposed orchard and parkland, filtering views of solar panels in the middleground which would also be set behind screen planting. Middle distance views to the left of the view would remain with panels visible within the existing field boundary network.

The scale of change is assessed as **Large**.

ISSUED BY Oxford t: 01865 887050
 DATE Nov 2020 DRAWN SG
 PAGE SIZE 420mm x 297mm CHECKED BC
 STATUS Final APPROVED AK

DWG. NO. 7533_PP_006_R

Camera Location (OS Grid Reference): 516019 E 197292 N
 Ground Level (mAOD): 88.6m
 Direction of View: bearing from North (0°): 115°
 Distance to Site: 0m
 Horizontal Field of View: 120° (Cylindrical projection)
 Paper Size: 420mm x 297mm (A3)

Enlargement Factor: TBC
 Visualisation Type: Type 1 (for context)
 Photo Date / Time: 16/09/2020 13:55
 Camera Model and Sensor Format: Canon EOS 6D, FFS
 Lens Make, Model and Focal Length: Canon EF50mm f/1.8 STM
 Height of Camera Lens above Ground (mAOD): 1.5m

PROJECT TITLE
**HILFIELD SOLAR FARM AND
 BATTERY STORAGE**

DRAWING TITLE
**Figure 7.6: Photograph Panel 6 (Right)
 Representative Viewpoint 6**

Aldenham School

Approximate extent of site



X:\JOBS\7533_Elfrree_Solar_Farm\docs\LVIA_Report\Figures\7533_PP_007.indd

Representative Viewpoint 7 (Left) - Slades Farm (Footpath Aldenham 042)

Approximate visibility of the Site
(Actual development area may be less than that shown)

ISSUED BY	Oxford	t: 01865 887050	
DATE	Nov 2020	DRAWN	SG
PAGE SIZE	420mm x 297mm	CHECKED	BC
STATUS	Final	APPROVED	AK

DWG. NO. 7533_PP_007_L

PROJECT TITLE
HILFIELD SOLAR FARM AND
BATTERY STORAGE

DRAWING TITLE
Figure 7.7: Photograph Panel 7 (Left)
Representative Viewpoint 7

Slade Farm



Representative Viewpoint 7 (Right) - Slades Farm (Footpath Aldenham 042)

View from Footpath Aldenham 042 adjacent to Slades Farm within the eastern site parcel looking northwest.

The scale of change would be **Large**.

The undulating terrain of the eastern site parcel can be seen, falling to Aldenham Brook before gently rising again toward Aldenham Road. The scrubby vegetation of the former landfill site can be seen to the left of the view with the roofline of Aldenham School visible amongst the treeline forming the horizon.

Figure 9.4 provides a photomontage of this view.

The foreground of this view would remain open allowing views northward and to the left of the view on the former landfill site which would be managed for skylark habitat enhancement. Views of solar panels would be possible in the middleground within the vegetative field boundary network and further filtered by the scrubby vegetation of the Aldenham Brook Green Corridor.

ISSUED BY Oxford t: 01865 887050
 DATE Nov 2020 DRAWN SG
 PAGE SIZE 420mm x 297mm CHECKED BC
 STATUS Final APPROVED AK

Camera Location (OS Grid Reference): 516707 E 197044 N
 Ground Level (mAOD): 90.6m
 Direction of View: bearing from North (0°): 325°
 Distance to Site: 0m
 Horizontal Field of View: 120° (Cylindrical projection)
 Paper Size: 420mm x 297mm (A3)

Enlargement Factor: TBC
 Visualisation Type: Type 1 (for context)
 Photo Date / Time: 16/09/2020 14:10
 Camera Model and Sensor Format: Canon EOS 6D, FFS
 Lens Make, Model and Focal Length: Canon EF50mm f/1.8 STM
 Height of Camera Lens above Ground (mAOD): 1.5m

PROJECT TITLE
 HILFIELD SOLAR FARM AND
 BATTERY STORAGE

DWG. NO. 7533_PP_007_R

DRAWING TITLE
 Figure 7.7: Photograph Panel 7 (Right)
 Representative Viewpoint 7

Aldenham School (screened)


Little Kendals Wood

Approximate extent of site



X:\JOBS\7533_Elfrree_Solar_Farm\docs\LVIA_Report\Figures\7533_PP_008.indd

Representative Viewpoint 8 (Left) - Footpath Aldenham 044 near Butterfly Lane

 Approximate visibility of the Site
(Actual development area may be less than that shown)

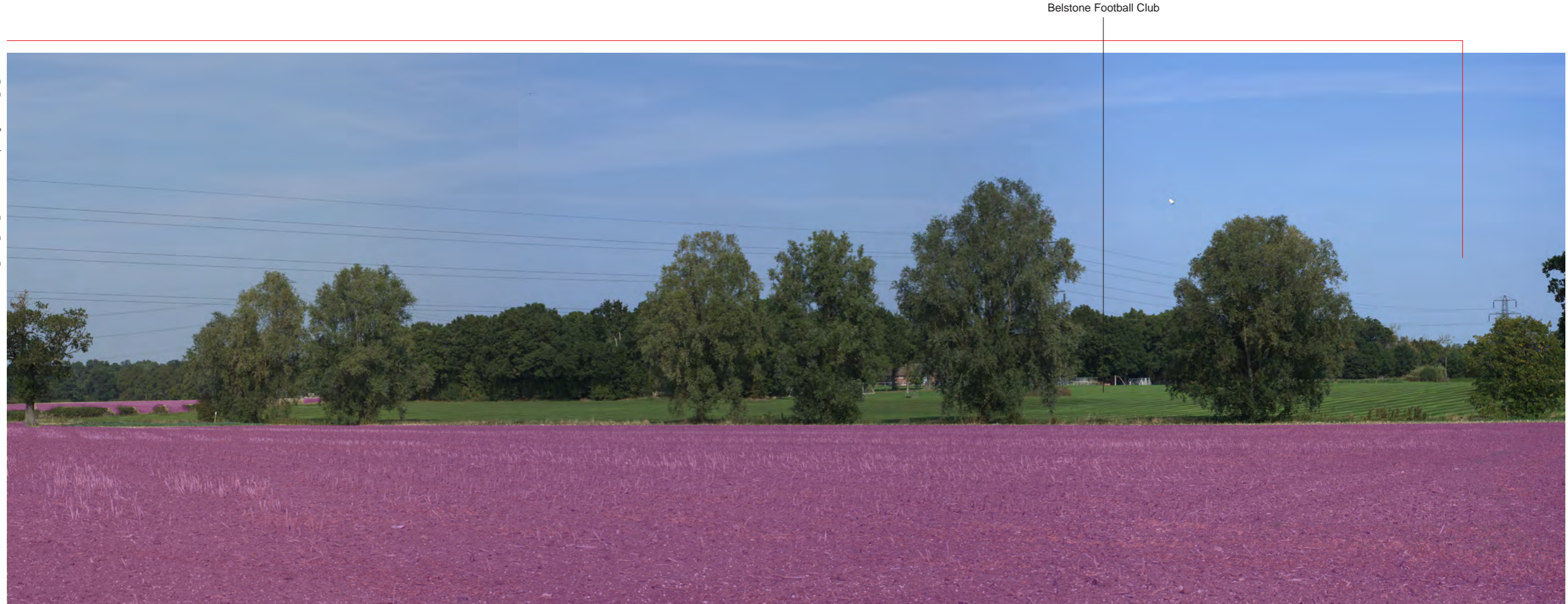
ISSUED BY	Oxford	t: 01865 887050	
DATE	Nov 2020	DRAWN	SG
PAGE SIZE	420mm x 297mm	CHECKED	BC
STATUS	Final	APPROVED	AK

DWG. NO. 7533_PP_008_L

PROJECT TITLE
HILFIELD SOLAR FARM AND
BATTERY STORAGE

DRAWING TITLE
Figure 7.8: Photograph Panel 8 (Left)
Representative Viewpoint 8

X:\Jobs\7533_Elstone_Solar_Farm\6docs\LVIA_Report\Figures\7533_PP_008.indd



Representative Viewpoint 8 (Right) - Footpath Aldenham 044 near Butterfly Lane

View from Footpath Aldenham 044 looking north across the eastern site parcel. The agricultural landscape of the Borehamwood Plateau can be seen with network of field boundaries and woodland blocks characteristic of the wider landscape. Belstone Football Club playing pitches can be seen to the right of view.

The solar panels of the Proposed Development would be seen in the foreground, offset from the path and set behind screening vegetation. Glimpsed views to the skylark habitat enhance area (Field 20) are likely to be possible and the network of field boundary vegetation, including Aldenham Brook Green Corridor, would also be visible.

The scale of change would be **Large**.

ISSUED BY Oxford t: 01865 887050
 DATE Nov 2020 DRAWN SG
 PAGE SIZE 420mm x 297mm CHECKED BC
 STATUS Final APPROVED AK

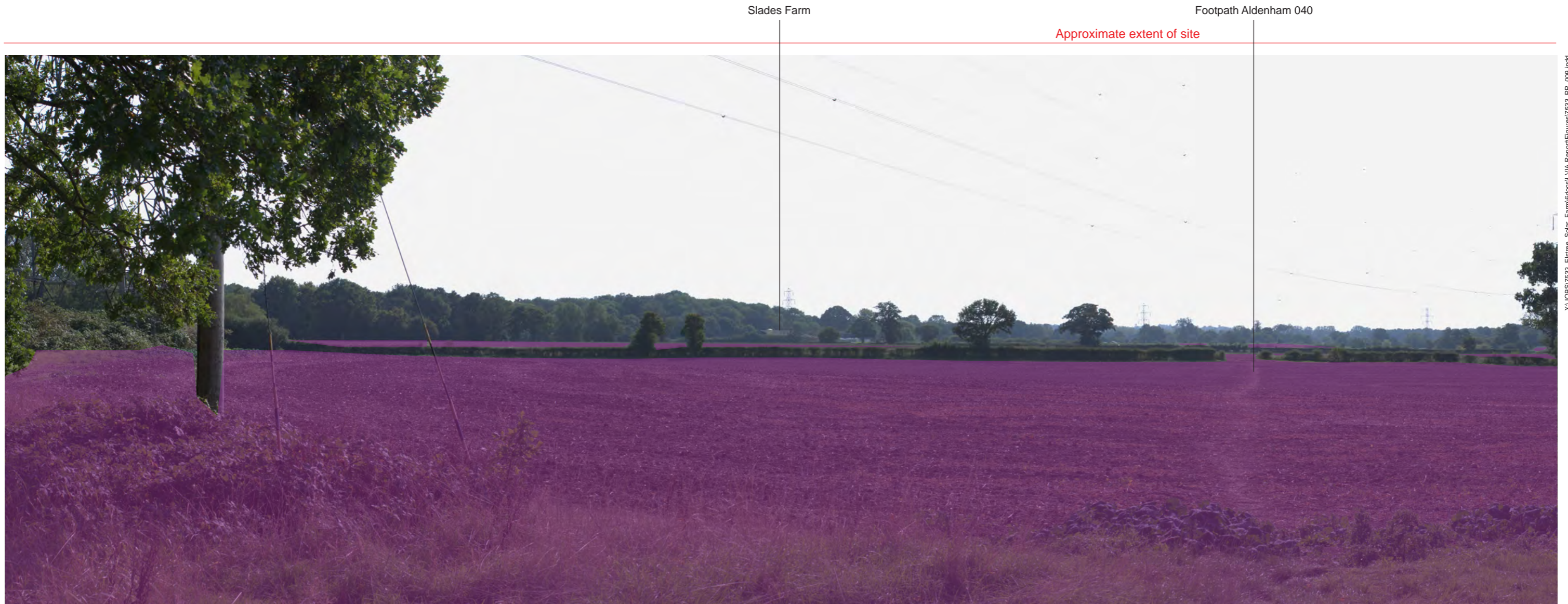
DWG. NO. 7533_PP_008_R

Camera Location (OS Grid Reference): 516898 E 197192 N
 Ground Level (mAOD): 89.6m
 Direction of View: bearing from North (0°): 5°
 Distance to Site: 18m
 Horizontal Field of View: 120° (Cylindrical projection)
 Paper Size: 420mm x 297mm (A3)

Enlargement Factor: TBC
 Visualisation Type: Type 1 (for context)
 Photo Date / Time: 16/09/2020 14:30
 Camera Model and Sensor Format: Canon EOS 6D, FFS
 Lens Make, Model and Focal Length: Canon EF50mm f/1.8 STM
 Height of Camera Lens above Ground (mAOD): 1.5m

PROJECT TITLE
**HILFIELD SOLAR FARM AND
 BATTERY STORAGE**

DRAWING TITLE
**Figure 7.8: Photograph Panel 8 (Right)
 Representative Viewpoint 8**



X:\JOBS\7533_Elfrree_Solar_Farm\docs\LVIA_Report\Figures\7533_PP_009.indd

Representative Viewpoint 9 (Left) - Footpath Aldenham 040 near Watling Street

Approximate visibility of the Site
(Actual development area may be less than that shown)

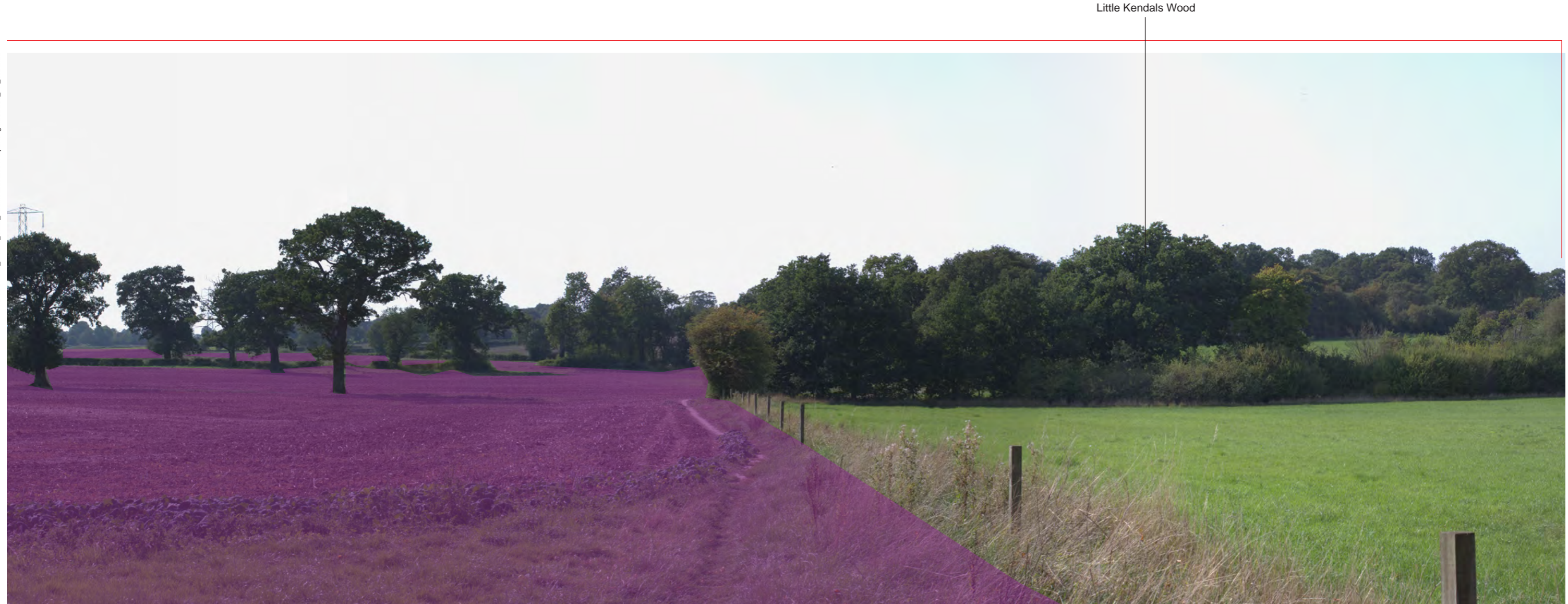
ISSUED BY	Oxford	t: 01865 887050	
DATE	Nov 2020	DRAWN	SG
PAGE SIZE	420mm x 297mm	CHECKED	BC
STATUS	Final	APPROVED	AK

DWG. NO. 7533_PP_009_L

PROJECT TITLE
**HILFIELD SOLAR FARM AND
BATTERY STORAGE**

DRAWING TITLE
**Figure 7.9: Photograph Panel 9 (Left)
Representative Viewpoint 9**

X:\Jobs\7533_Elstone_Solar_Farm\6docs\LVIA_Report\Figures\7533_PP_009.indd



Representative Viewpoint 9 (Right) - Footpath Aldenham 040 near Watling Street

View from Footpath Aldenham 040 near Watling Street within the eastern site parcel (Field 14) looking southwest.

Arable farmland punctuated by mature individual trees and hedgerows are characteristic of the visual composition, with woodland blocks just beyond the Site boundary forming the horizon.

Figure 9.5 provides a photomontage of this view.

Given their proximity, solar panels of the Proposed Development would form the dominant feature of the view, set within the vegetative network which would be retained. The Aldenham Brook Green Corridor would also maintain open views to the right of view providing a generous offset of solar panels from the path.

The scale of change would be **Large**.

ISSUED BY Oxford t: 01865 887050
 DATE Nov 2020 DRAWN SG
 PAGE SIZE 420mm x 297mm CHECKED BC
 STATUS Final APPROVED AK

DWG. NO. 7533_PP_009_R

Camera Location (OS Grid Reference): 517049 E 197897 N
 Ground Level (mAOD): 82.4m
 Direction of View: bearing from North (0°): 229°
 Distance to Site: 0m
 Horizontal Field of View: 120° (Cylindrical projection)
 Paper Size: 420mm x 297mm (A3)

Enlargement Factor: TBC
 Visualisation Type: Type 1 (for context)
 Photo Date / Time: 16/09/2020 14:50
 Camera Model and Sensor Format: Canon EOS 6D, FFS
 Lens Make, Model and Focal Length: Canon EF50mm f/1.8 STM
 Height of Camera Lens above Ground (mAOD): 1.5m

PROJECT TITLE
**HILFIELD SOLAR FARM AND
 BATTERY STORAGE**

DRAWING TITLE
**Figure 7.9: Photograph Panel 9 (Right)
 Representative Viewpoint 9**

Hart's Farm


New dwellings at Rossway Drive

Elstree Electricity Substation



X:\JOBS\7533_Elstree_Solar_Farm\docs\LVA_Report\Figures\7533_PP_010.indd

Representative Viewpoint 10 (Left) - Bushy (Footpath Bushy 040)

 Approximate visibility of the Site
(Actual development area may be less than that shown)

ISSUED BY	Oxford	t: 01865 887050	
DATE	Nov 2020	DRAWN	SG
PAGE SIZE	420mm x 297mm	CHECKED	BC
STATUS	Final	APPROVED	AK

DWG. NO. 7533_PP_010_L

PROJECT TITLE
**HILFIELD SOLAR FARM AND
BATTERY STORAGE**

DRAWING TITLE
**Figure 7.10: Photograph Panel 10 (Left)
Representative Viewpoint 10**

X:\Jobs\7533_Elstone_Solar_Farm\6docs\LVIA_Report\Figures\7533_PP_010.indd



Representative Viewpoint 10 (Right) - Bushy (Footpath Bushy 040)

View looking east from Footpath Bushey 040 at the eastern edge of Bushy. Views of the western site parcel are heavily screened by intervening vegetation including field boundaries and belt planting along the M1 and A41. Hilfield Castle can be seen amongst woodland to the right of the view as well as the taller elements of Elstree substation to the left. The landform gradually falls eastward from this location to the Hilfield Brook further reducing potential for views.

The Proposed Development would be largely screened from view with only glimpses through to solar panels in Field 1. Potential for views would be greater in winter when deciduous vegetation is not in leaf but the tiers of intervening vegetation would still provide a good level of screening.

The scale of change is assessed as **Negligible**.

ISSUED BY Oxford t: 01865 887050
 DATE Nov 2020 DRAWN SG
 PAGE SIZE 420mm x 297mm CHECKED BC
 STATUS Final APPROVED AK

DWG. NO. 7533_PP_010_R

Camera Location (OS Grid Reference):	514656 E 195453 N	Enlargement Factor:	TBC
Ground Level (mAOD):	98.6m	Visualisation Type:	Type 1 (for context)
Direction of View: bearing from North (0°):	10°	Photo Date / Time:	17/09/2020 11:20
Distance to Site:	584m	Camera Model and Sensor Format:	Canon EOS 6D, FFS
Horizontal Field of View:	120° (Cylindrical projection)	Lens Make, Model and Focal Length:	Canon EF50mm f/1.8 STM
Paper Size:	420mm x 297mm (A3)	Height of Camera Lens above Ground (mAOD):	1.5m

PROJECT TITLE
**HILFIELD SOLAR FARM AND
 BATTERY STORAGE**

DRAWING TITLE
**Figure 7.10: Photograph Panel 10 (Right)
 Representative Viewpoint 10**


Vegetation lining Watling Street

Dwellings on Watling Street



X:\JOBS\7533_Elfrree_Solar_Farm\docs\LVIA_Report\Figures\7533_PP_011.indd

Representative Viewpoint 11 (Left) - Footpath Aldenham 040 - East

 Approximate visibility of the Site
(Actual development area may be less than that shown)

ISSUED BY	Oxford	t: 01865 887050	
DATE	Nov 2020	DRAWN	SG
PAGE SIZE	420mm x 297mm	CHECKED	BC
STATUS	Final	APPROVED	AK

DWG. NO. 7533_PP_011_L

PROJECT TITLE
HILFIELD SOLAR FARM AND
BATTERY STORAGE

DRAWING TITLE
Figure 7.11: Photograph Panel 11 (Left)
Representative Viewpoint 11

Woodland at Aldenham Park

Slades Farm

Approximate extent of site

X:\JOBS\7533_Elstone_Solar_Farm\6docs\LVIA_Report\Figures\7533_PP_011.indd



Representative Viewpoint 11 (Centre) - Footpath Aldenham 040 - East

View from Footpath Aldenham 040 within the eastern site parcel looking south. The arable fields create a relative open view in this area where features such as Slades Farm and pylons can be seen. Woodland at Aldenham Park forms the horizon to the view restricting views further south whilst vegetation aligning Watling Street forms an effective screen to views from the east.

Figure 9.5 provides a photomontage of this location.

Given their proximity, solar panels of the Proposed Development would form the main feature of the view. The open view to the right would remain along the proposed Aldenham Brook Green Corridor with panels set between 30m and 95m from this main structuring landscape component.

The scale of change would be **Large**.

ISSUED BY Oxford t: 01865 887050
 DATE Nov 2020 DRAWN SG
 PAGE SIZE 420mm x 297mm CHECKED BC
 STATUS Final APPROVED AK

DWG. NO. 7533_PP_011_C

Camera Location (OS Grid Reference): 516667 E 197717 N
 Ground Level (mAOD): 80.8m
 Direction of View: bearing from North (0°): 160°
 Distance to Site: 0m
 Horizontal Field of View: 180° (Cylindrical projection)
 Paper Size: 420mm x 297mm (A3)

Enlargement Factor: TBC
 Visualisation Type: Type 1 (for context)
 Photo Date / Time: 17/11/2020 13:15
 Camera Model and Sensor Format: Canon EOS 6D, FFS
 Lens Make, Model and Focal Length: Canon EF50mm f/1.8 STM
 Height of Camera Lens above Ground (mAOD): 1.5m

PROJECT TITLE
**HILFIELD SOLAR FARM AND
 BATTERY STORAGE**


DRAWING TITLE
**Figure 7.11: Photograph Panel 11 (Centre)
 Representative Viewpoint 11**

Aldenham Brook



X:\JOBS\7533_Elfrree_Solar_Farm\docs\LVA_Report\Figures\7533_PP_011.indd

Representative Viewpoint 11 (Right) - Footpath Aldenham 040 - East

 Approximate visibility of the Site
(Actual development area may be less than that shown)

ISSUED BY	Oxford	t: 01865 887050	
DATE	Nov 2020	DRAWN	SG
PAGE SIZE	420mm x 297mm	CHECKED	BC
STATUS	Final	APPROVED	AK

DWG. NO. 7533_PP_011_R

PROJECT TITLE
HILFIELD SOLAR FARM AND
BATTERY STORAGE

DRAWING TITLE
Figure 7.11: Photograph Panel 11 (Right)
Representative Viewpoint 11


Dwellings on Watling Street

Woodland at Aldenham Park



X:\JOBS\7533_Elfrree_Solar_Farm\docs\LVA_Report\Figures\7533_PP_012.indd

Representative Viewpoint 12 (Left) - Footpath Aldenham 040 - Central

 Approximate visibility of the Site
(Actual development area may be less than that shown)

ISSUED BY	Oxford	t: 01865 887050	
DATE	Nov 2020	DRAWN	SG
PAGE SIZE	420mm x 297mm	CHECKED	BC
STATUS	Final	APPROVED	AK

DWG. NO. 7533_PP_012_L

PROJECT TITLE
HILFIELD SOLAR FARM AND
BATTERY STORAGE

DRAWING TITLE
Figure 7.12: Photograph Panel 12 (Left)
Representative Viewpoint 12

X:\JOBS\7533_Elstone_Solar_Farm\6docs\LVIA_Report\Figures\7533_PP_012.indd



Representative Viewpoint 12 (Centre) - Footpath Aldenham 040 - Central

View from Footpath Aldenham 040 within the eastern site parcel looking south.

The view comprises a mixture of arable land and field boundary vegetation. Vegetation lining Aldenham Book can be seen in the foreground as can the screening properties of woodland at Aldenham Park and Watling Street. Slades Farm can also be seen to the centre of the view.

The Proposed Development would form the dominant feature of the composition, broken by the existing vegetation which would be retained and allowed to grow out more fully providing greater screening properties. Panels would also be offset from existing public rights of way and screened with planting to mitigate effects to users.

The scale of change would be **Large**.

ISSUED BY Oxford t: 01865 887050
 DATE Nov 2020 DRAWN SG
 PAGE SIZE 420mm x 297mm CHECKED BC
 STATUS Final APPROVED AK

DWG. NO. 7533_PP_012_C

Camera Location (OS Grid Reference): 516446 E 197547 N
 Ground Level (mAOD): 83.2m
 Direction of View: bearing from North (0°): 150°
 Distance to Site: 0m
 Horizontal Field of View: 180° (Cylindrical projection)
 Paper Size: 420mm x 297mm (A3)

Enlargement Factor: TBC
 Visualisation Type: Type 1 (for context)
 Photo Date / Time: 17/11/2020 13:25
 Camera Model and Sensor Format: Canon EOS 6D, FFS
 Lens Make, Model and Focal Length: Canon EF50mm f/1.8 STM
 Height of Camera Lens above Ground (mAOD): 1.5m

PROJECT TITLE
**HILFIELD SOLAR FARM AND
 BATTERY STORAGE**


DRAWING TITLE
**Figure 7.12: Photograph Panel 12 (Centre)
 Representative Viewpoint 12**

Footpath Aldenham 040



X:\JOBS\7533_Elfrree_Solar_Farm\docs\LVIA_Report\Figures\7533_PP_012.indd

Representative Viewpoint 12 (Right) - Footpath Aldenham 040 - Central

 Approximate visibility of the Site
(Actual development area may be less than that shown)

ISSUED BY	Oxford	t: 01865 887050	
DATE	Nov 2020	DRAWN	SG
PAGE SIZE	420mm x 297mm	CHECKED	BC
STATUS	Final	APPROVED	AK

DWG. NO. 7533_PP_012_R

PROJECT TITLE
HILFIELD SOLAR FARM AND
BATTERY STORAGE

DRAWING TITLE
Figure 7.12: Photograph Panel 12 (Right)
Representative Viewpoint 12