



**HERTSMERE BOROUGH COUNCIL**

**OPEN SPACE ASSESSMENT REPORT**

**JULY 2019**

**Knight, Kavanagh & Page Ltd**  
Company No: 9145032 (England)

**MANAGEMENT CONSULTANTS**

Registered Office: 1 -2 Frecheville Court, off Knowsley Street, Bury BL9 0UF

T: 0161 764 7040 E: [mail@kcp.co.uk](mailto:mail@kcp.co.uk) [www.kcp.co.uk](http://www.kcp.co.uk)



6543

Quality assurance	Name	Date
Report origination	CD	Dec 2018
Quality control	CMF/AL	Dec 2018
Client comments	HBC	Feb/March/July 2019
Revised version	KKP	April/July 2019
Agreed sign off	All	November 2019

**HERTSMERE BOROUGH COUNCIL  
OPEN SPACE ASSESSMENT**

---

---

**Contents**

PART 1: INTRODUCTION ..... 1

- 1.1 Report structure ..... 2
- 1.2 National context ..... 3
- 1.3 Local context ..... 3

PART 2: METHODOLOGY ..... 5

- 2.1 Population ..... 5
- 2.2 Auditing local provision (supply) ..... 6
- 2.3 Quality and value ..... 6
- 2.4 Quality and value thresholds ..... 8

PART 3: SUMMARY OF SURVEY AND AUDIT SCORES ..... 10

- 3.1 Audit overview ..... 10
- 3.2 Quality ..... 10
- 3.3 Value ..... 11
- 3.4 Summary ..... 11

PART 4: PARKS AND GARDENS ..... 12

- 4.1 Introduction ..... 12
- 4.2 Current provision ..... 12
- 4.3 Accessibility ..... 12
- 4.4 Quality ..... 14
- 4.5 Value ..... 16
- 4.6 Summary ..... 17

PART 5: NATURAL AND SEMI-NATURAL GREENSPACE ..... 18

- 5.1 Introduction ..... 18
- 5.2 Current provision ..... 18
- 5.3 Accessibility ..... 18
- 5.4 Quality ..... 20
- 5.5 Value ..... 21
- 5.6 Summary ..... 22

PART 6: AMENITY GREENSPACE ..... 23

- 6.1 Introduction ..... 23
- 6.2 Current provision ..... 23
- 6.3 Accessibility ..... 23
- 6.4 Quality ..... 26
- 6.5 Value ..... 27
- 6.6 Summary ..... 28

**HERTSMERE BOROUGH COUNCIL  
OPEN SPACE ASSESSMENT**

---

---

PART 7: PROVISION FOR CHILDREN AND YOUNG PEOPLE .....29

- 7.1 Introduction .....29
- 7.2 Current provision.....29
- 7.3 Accessibility .....29
- 7.4 Quality .....32
- 7.5 Value .....33
- 7.6 Summary .....34

PART 8: ALLOTMENTS .....35

- 8.1 Introduction .....35
- 8.2 Current provision.....35
- 8.3 Accessibility .....35
- 8.4 Quality .....37
- 8.5 Value .....38
- 8.6 Summary .....39

PART 9: CEMETERIES.....40

- 9.1 Introduction .....40
- 9.2 Current provision.....40
- 9.3 Accessibility .....40
- 9.4 Quality .....42
- 9.5 Value .....43
- 9.6 Summary .....43

# HERTSMERE BOROUGH COUNCIL

## OPEN SPACE ASSESSMENT

---

### Glossary

DPD	Development Plan Document
FIT	Fields in Trust
FOG	Friends of Group
GIS	Geographical Information Systems
HBC	Hertsmere Borough Council
KKP	Knight, Kavanagh and Page
LDF	Local Development Framework
LNR	Local Nature Reserve
MUGA	Multi-use Games Area (an enclosed area with a hard surface for variety of informal play)
NPPF	National Planning Policy Framework
NSALG	National Society of Allotment and Leisure Gardeners
ONS	Office of National Statistics
PPG	Planning Policy Guidance
PPS	Playing Pitch Strategy
SOA	Super Output Areas
SPD	Supplementary Planning Document
SSSI	Sites of Special Scientific Interest

# HERTSMERE BOROUGH COUNCIL

## OPEN SPACE ASSESSMENT

### PART 1: INTRODUCTION

Knight, Kavanagh & Page Ltd (KKP) has been jointly commissioned by three of the South West Herts group of local authorities (Three Rivers District Council, Dacorum Borough Council and Hertsmere Borough Council) to produce an Open Space, Sport & Recreation Study which includes production of an Open Space Study for each of the local authority areas.

The Open Space Study forms one part of the inter-related project that also includes a Playing Pitch Strategy (PPS) and an Indoor Sports Facilities Strategy (ISFS) for each of the local authority areas.

The studies will provide the necessary robustness and direction to inform decisions on future strategic planning and any investment priorities for open spaces, indoor and outdoor sports facilities across each of the areas. It will also inform the preparation of the individual Local Plans and inform the South West Herts Joint Strategic Plan.

This is the Open Space Assessment Report prepared by Knight Kavanagh & Page (KKP) for Hertsmere Borough Council (HBC). It provides detail with regard to what open space provision exists in the area, its condition, distribution and overall quality. This document sets out the findings of the research, consultation, site assessments, data analysis and GIS mapping undertaken as part of this study.

The study also considers the future requirements for provision based upon population distribution, planned growth and findings. The Standards Paper (to follow) will give direction on the future provision of accessible and high-quality provision for open spaces.

The table below details the open space typologies included within the study:

*Table 1.1: Open space typology definitions*

Typology	Primary purpose
Parks and gardens	Accessible, high quality opportunities for informal recreation and community events.
Natural and semi-natural greenspaces	Wildlife conservation, biodiversity and environmental education and awareness.
Amenity greenspace	Opportunities for informal activities close to home or work or enhancement of the appearance of residential or other areas.
Provision for children and young people	Areas designed primarily for play and social interaction involving children and young people, such as equipped play areas, MUGAs, skateboard areas and teenage shelters.
Allotments	Opportunities for those people who wish to do so to grow their own produce as part of the long term promotion of sustainability, health and social inclusion.
Cemeteries and churchyards	Quiet contemplation and burial of the dead, often linked to the promotion of wildlife conservation and biodiversity.

A point to note open space sites do occasionally have characteristics of more than one of the above typologies; however, for the purpose of this study, and to avoid double counting of sites, they have been categorised based on the primary typology they best reflect.

# HERTSMERE BOROUGH COUNCIL

## OPEN SPACE ASSESSMENT

---

In order for planning policies to be 'sound', local authorities are required to carry out a robust assessment of need for open space, sport and recreation facilities. We advocate that the methodology to undertake such assessments should still be informed by best practice including the Planning Policy Guidance 17 (PPG17) Companion Guidance; *Assessing Needs and Opportunities*' published in September 2002.

The National Planning Policy Framework (NPPF) has replaced PPG17. However, assessment of open space facilities is still normally carried out in accordance with the Companion Guidance to PPG17 as it still remains the only national best practice guidance on the conduct of an open space assessment.

Under paragraph 96 of the NPPF, it is set out that planning policies should be based on robust and up-to-date assessments of the needs for open space, sports and recreation facilities and opportunities for new provision. Specific needs and quantitative and qualitative deficiencies and surpluses in local areas should also be identified. This information should be used to inform what provision is required in an area.

In accordance with best practice recommendations, a size threshold of 0.2 hectares has been applied to the inclusion of some typologies within the study. In general, sites that fall below this threshold are not audited unless identified as being significant.

### 1.1 Report structure

#### ***Open spaces***

This report considers the supply and demand issues for open space provision across Hertsmere. Each part contains relevant typology specific data. Further description of the methodology used can be found in Part 2. The report as a whole covers the predominant issues for all open spaces as defined in best practice guidance:

- ◀ Part 2: Methodology
- ◀ Part 3: Summary of survey and audit scores
- ◀ Part 4: Parks and Gardens
- ◀ Part 5: Natural/semi-natural greenspace
- ◀ Part 6: Amenity Greenspace
- ◀ Part 7: Provision for children/young people
- ◀ Part 8: Allotments
- ◀ Part 9: Cemeteries

#### ***Associated strategies***

The study sits alongside the Playing Pitch Strategy (PPS); also undertaken by KKP (provided in separate reports). The Companion Guidance to PPG17 included the open space typology of formal outdoor sports. This is predominantly covered within the associated PPS. The PPS is undertaken in accordance with the methodology provided in Sport England's Guidance 'Developing a Playing Pitch Strategy' for assessing demand and supply for outdoor sports facilities (2013).

Any site initially categorised as outdoor sports provision but with a clear multifunctional role (i.e. available for wider community use) is included in this study as a type of open space. Pitch or sport sites purely for sporting use are solely included within the PPS. Double counting between the two studies does not occur as the PPS looks at the number of pitch/sports facilities at a site and not hectares of land (as prescribed in Sport England Guidance).

# HERTSMERE BOROUGH COUNCIL

## OPEN SPACE ASSESSMENT

---

### 1.2 National context

#### ***National Planning Policy Framework***

The NPPF sets out the planning policies for England. It details how these are expected to be applied to the planning system and provides a framework to produce distinct local and neighbourhood plans, reflecting the needs and priorities of local communities.

It states that the purpose of the planning system is to contribute to the achievement of sustainable development. It establishes that the planning system needs to focus on three themes of sustainable development: economic, social and environmental. A presumption in favour of sustainable development is a key aspect for any plan-making and decision-taking processes. In relation to plan-making the NPPF sets out that Local Plans should meet objectively assessed needs.

Under paragraph 96 of the NPPF, it is set out that planning policies should be based on robust and up-to-date assessments of the needs for open space, sports and recreation facilities and opportunities for new provision. Specific needs and quantitative and qualitative deficiencies and surpluses in local areas should also be identified. This information should be used to inform what provision is required in an area.

As a prerequisite paragraph 97 of the NPPF states that existing open space, sports and recreation sites, including playing fields, should not be built on unless:

- ◀ An assessment has been undertaken, which has clearly shown the site to be surplus to requirements; or
- ◀ The loss resulting from the proposed development would be replaced by equivalent or better provision in terms of quantity and quality in a suitable location; or
- ◀ The development is for alternative sports and recreational provision, the needs for which clearly outweigh the loss.

### 1.3 Local context

Hertsmere is situated on the outer fringes of London and borders the London Boroughs of Barnet, Harrow and Enfield as well as Three Rivers, Watford, St Albans and Welwyn Hatfield Councils.

#### ***Hertsmere's 2020 Vision***

Hertsmere Council sets out a vision for 2020 to work with its residents to improve communities and places. It identifies that within Hertsmere there are increasing financial pressures, a changing population and changes in legislation. It plans to respond to this in a number of ways including:

- ◀ Ensuring future growth meets the needs of the borough and its residents
- ◀ Seek to protect and enhance the natural environment
- ◀ Supporting residents to be healthier and live longer
- ◀ Provide opportunities to enable all the people of Hertsmere to lead fulfilling lives
- ◀ Work in partnership to build a safe, strong and cohesive community



# HERTSMERE BOROUGH COUNCIL

## OPEN SPACE ASSESSMENT

---

### ***Development Plan Context***

The Council's current planning policy framework comprises the Core Strategy (2013), Elstree Way Corridor Area Action Plan (2015) and Site Allocations and Development Management Policies Plan (2016).

A review of the Local Plan was commenced in 2016, this is scheduled for adoption in 2021. This open space will act as an evidence base to inform policies and priorities within the Local Plan document.

### ***South West Hertfordshire Joint Strategic Plan (JSP)***

The three commissioning Councils, together with St Albans and Watford Councils have also begun work on a Joint Strategic Plan (JSP) for the wider South West Hertfordshire area.

The JSP is intended to set the longer-term strategic framework and shared priorities within which future local plans will be prepared. A key aim will be to ensure that infrastructure such as transport, schools, health and utilities are properly co-ordinated and delivered alongside the need for new homes and jobs.

# HERTSMERE BOROUGH COUNCIL OPEN SPACE ASSESSMENT

## PART 2: METHODOLOGY

This section details the methodology undertaken as part of the study. The key stages are:

- ↳ 2.1: Population and analysis areas
- ↳ 2.2: Auditing local provision
- ↳ 2.3: Quality and value
- ↳ 2.4: Quality and value thresholds

### 2.1 Population and analysis areas

To allow for a more localised analysis of open space provision, the local area has been sub divided into four analysis areas.

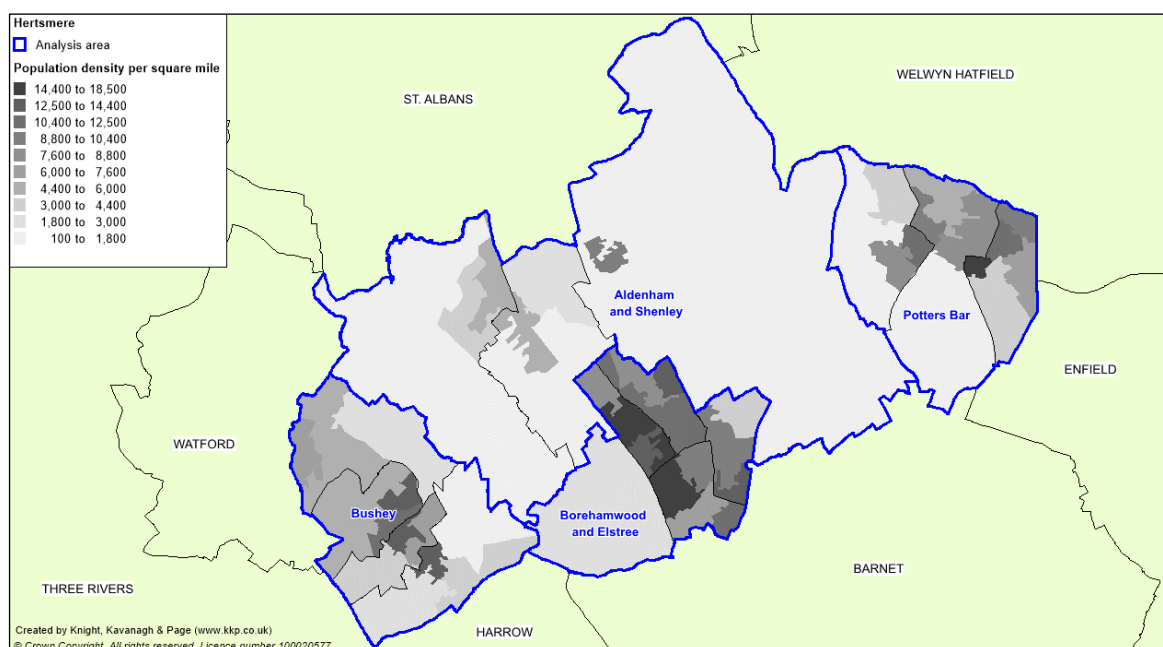
Table 2.1: Population by analysis area

Analysis area	Population (2017)*
Aldenham & Shenley	15,280
Borehamwood & Elstree	38,900
Bushey	26,931
Potters Bar	22,727
<b>Hertsmere</b>	<b>104,031</b>

The population figure is used to help determine the current provision levels for different types of open space. Consequently, this will be used to inform and set a quantity provision standard.

The Standards Paper will analyse the potential current deficiencies and/or future priorities.

Figure 2.1: Hertsmere analysis areas



\* ONS Mid-Year Estimates 2017

# HERTSMERE BOROUGH COUNCIL

## OPEN SPACE ASSESSMENT

---

### 2.2 Auditing local provision (supply)

The KKP Field Research Team undertook the site audit scoring for this study in 2018. Open space sites (including provision for children and young people) are identified, mapped and assessed to evaluate site value and quality. Only sites publicly accessible are included (i.e. private sites or land, which people cannot access, are not included). Each site is classified based on its primary open space purpose, so that each type of space is counted only once. The audit, and the report, utilise the following typologies in accordance with best practice:

- ◀ Parks & gardens
- ◀ Natural & semi-natural greenspace
- ◀ Amenity greenspace
- ◀ Provision for children & young people
- ◀ Allotments
- ◀ Cemeteries

A total of 175 sites are included with sites being visited and assessed with support from a desk-based exercise in order to check, review and allocate a quality and value score.

In accordance with best practice recommendations, a size threshold of 0.2 hectares is applied to the inclusion of some typologies within the study. Sites of a smaller size, particularly for the typologies of amenity greenspace and natural and semi-natural greenspace tend to have a different role. Often this is for visual purposes (e.g. small incremental grassed areas such as highway verges) and is therefore considered as offering less recreational use in comparison to other forms of open space. Subsequently sites below 0.2 hectares for these typologies are not audited. However, any sites below the threshold (i.e. those that are identified through consultation as being of significance) are included.

#### ***Database development***

All information relating to open spaces is collated in the project open space database (to be supplied as an Excel electronic file). All sites identified and assessed as part of the audit are recorded within the database. The database details for each site are as follows:

#### **Data held on open spaces database (summary)**

- ◀ KKP reference number (used for mapping)
- ◀ Site name
- ◀ Ownership (if known)
- ◀ Management (if known)
- ◀ Typology
- ◀ Size (hectares)
- ◀ Site audit data

Sites are primarily identified by KKP in the audit using official site names, where possible, and/or secondly using road names and locations.

### 2.3 Quality and value

Each type of open space receives separate quality and value scores. This also allows for application of a high and low quality/value matrix to further help determine prioritisation of

# HERTSMERE BOROUGH COUNCIL

## OPEN SPACE ASSESSMENT

---

investment and to identify sites that may be surplus within and to a particular open space typology.

Quality and value are fundamentally different and can be unrelated. For example, a high quality space may be inaccessible and, thus, be of little value; whereas a rundown (poor quality) space may be the only one in an area and thus be immensely valuable. As a result, quality and value are also treated separately in terms of scoring.

### ***Analysis of quality***

Data collated from site visits is initially based upon those derived from the Green Flag Award scheme (a national standard for parks and green spaces in England and Wales, operated by Keep Britain Tidy). This is utilised to calculate a quality score for each site visited. Scores in the database are presented as percentage figures. The quality criteria used for the open space assessments carried out for all open space typologies are summarised in the following table.

#### **Quality criteria for open space site visit (score)**

- ▶ Physical access, e.g. public transport links, directional signposts,
- ▶ Personal security, e.g. site is overlooked, natural surveillance
- ▶ Access-social, e.g. appropriate minimum entrance widths
- ▶ Parking, e.g. availability, specific, disabled parking
- ▶ Information signage, e.g. presence of site information, notice boards
- ▶ Equipment and facilities, e.g. adequacy and maintenance of provision such as seating, bins, toilets, etc
- ▶ Site problems, e.g. presence of vandalism, graffiti
- ▶ Healthy, safe and secure, e.g. fencing, gates, staff on site
- ▶ Maintenance and cleanliness, e.g. condition of general landscape & features
- ▶ Groups that the site meets the needs of, e.g. elderly, young people

For the provision for children and young people, criteria are also built around the Green Flag. It is a non-technical visual assessment of the whole site, including general equipment and surface quality/appearance plus an assessment of, for example, bench and bin provision. This differs, for example, from an independent Royal Society for the Prevention of Accidents (RosPA) review, which is a more technical assessment of equipment in terms of play and risk assessment grade.

### ***Analysis of value***

Site visit data plus desk-based research is calculated to provide value scores for each site identified. Value is defined in best practice guidance in relation to the following three issues:

- ▶ Context of the site i.e. its accessibility, scarcity value and historic value.
- ▶ Level and type of use.
- ▶ The wider benefits it generates for people, biodiversity and the wider environment.

In addition, the NPPF refers to attributes to value such as beauty and attractiveness of a site, its recreational value, historic and cultural value and its tranquillity and richness of wildlife.

# HERTSMERE BOROUGH COUNCIL

## OPEN SPACE ASSESSMENT

The value criteria set for audit assessment is derived as:

### Value criteria for open space site visits (score)

- ◀ Level of use (observations only), e.g., evidence of different user types (e.g. dog walkers, joggers, children) throughout day, located near school and/or community facility
- ◀ Context of site in relation to other open spaces
- ◀ Structural and landscape benefits, e.g., well located, high quality defining the identity/ area
- ◀ Ecological benefits, e.g., supports/promotes biodiversity and wildlife habitats
- ◀ Educational benefits, e.g., provides learning opportunities on nature/historic landscapes
- ◀ Social inclusion and health benefits, e.g., promotes civic pride, community ownership and a sense of belonging; helping to promote physical and mental well-being
- ◀ Cultural and heritage benefits, e.g., historic links, statues and high profile symbols of local area
- ◀ Amenity benefits and a sense of place, e.g., attractive places that are safe and well maintained; helping to create specific neighbourhoods and landmarks
- ◀ Economic benefits, e.g., enhances property values, promotes economic activity and attracts people from near and far

Children’s and young people play provision is scored for value as part of the audit assessment. Value, in particular is recognised in terms of size of sites and the range of equipment it hosts. For instance, a small site with only one or two items is likely to be of a lower value than a site with a variety of equipment catering for wider age ranges.

### 2.4 Quality and value thresholds

To determine whether sites are high or low quality (as recommended by guidance); the results of the site assessments are colour-coded against a baseline threshold (high being green and low being red). The primary aim of applying a threshold is to identify sites where investment and/or improvements may be required. It can also be used to set an aspirational quality standard to be achieved in the future and to inform decisions around the need to further protect sites from future development (particularly when applied with its respective value score in a matrix format).

The baseline threshold for assessing quality can be set on the pass rate for Green Flag criteria (66%) as the site audit criteria is based on Green Flag. This is the only national benchmark available for quality of parks and open spaces. However, the site audit criteria used for Green Flag is not appropriate for every open space typology as it is designed to represent a sufficiently high standard of site. Furthermore, all criteria are not used for all types of open space; as some criteria is more relevant for some forms of open space as opposed to others. Quality thresholds are, thus, adjusted to better reflect average scores for each typology. Consequently, the baseline threshold for certain typologies is amended to better reflect this.

*Table 2.2: Quality and value thresholds by typology*

Typology	Quality threshold	Value threshold
Parks and gardens	60%	20%
Natural and semi-natural greenspace	45%	20%
Amenity greenspace	50%	20%
Provision for children and young people	60%	20%
Allotments	45%	20%
Cemeteries	45%	20%

## **HERTSMERE BOROUGH COUNCIL OPEN SPACE ASSESSMENT**

---

For value, there is no national guidance on the setting of thresholds. The 20% threshold applied is derived from our experience and knowledge in assessing the perceived value of sites. Whilst 20% may initially seem low it is a relative score - designed to reflect those sites that meet more than one aspect of the criteria used for assessing value (as detailed earlier).

# HERTSMERE BOROUGH COUNCIL OPEN SPACE ASSESSMENT

## PART 3: SUMMARY OF SURVEY AND AUDIT SCORES

This section describes generic trends and findings from the quality and value ratings for the site audit scores undertaken. Site specific and typology issues are covered in the relevant sections later in the report.

### 3.1 Audit overview

Within Hertsmere there is a total of 175 sites equating to over 315 hectares of open space. The largest contributor to accessible provision is parks and gardens (109 hectares); accounting for 35% of open space.

Table 3.1: Overview of open space provision

Open space typology	Number of sites	Total amount (hectares)*
Park and gardens	9	109
Natural & semi-natural greenspace	22	81
Amenity greenspace	67	73
Provision for children & young people	53	6
Allotments	13	19
Cemeteries	11	27
<b>TOTAL</b>	<b>175</b>	<b>315</b>

### 3.2 Quality

The methodology for assessing quality is set out in Part 2 (Methodology). The table below summarises the results of the value assessment for open spaces across Hertsmere.

Table 3.2: Quality scores for all open space typologies

Typology	Threshold	Scores			No. of sites <sup>†</sup>	
		Lowest score	Average score	Highest score	Low	High
Park and gardens	60%	67%	75%	86%	0	9
Natural & semi-natural greenspace	45%	25%	49%	69%	6	16
Amenity greenspace	50%	30%	52%	90%	34	33
Provision for children & young people	60%	36%	63%	84%	18	34
Allotments	45%	20%	43%	67%	6	6
Cemeteries	45%	25%	46%	59%	4	7
<b>TOTAL</b>	-	<b>20%</b>	-	<b>90%</b>	<b>68</b>	<b>105</b>

There is generally a reasonably good level of quality across most open space sites. This is reflected in nearly two thirds (61%) of sites scoring above their set threshold for quality.

\* Rounded to the nearest whole number

† Two sites do not receive a quality/value rating consequently 173 sites are scored

# HERTSMERE BOROUGH COUNCIL OPEN SPACE ASSESSMENT

## 3.3 Value

The methodology for assessing value is set out in Part 2 (Methodology). The table below summarises the results of the value assessment for open spaces across Hertsmere.

Table 3.3: Value scores for all open space typologies

Typology	Threshold	Scores			No. of sites	
		Lowest score	Average score	Highest score	<20%	>20%
Park and gardens	20%	55%	63%	73%	0	9
Natural & semi-natural greenspace		16%	32%	50%	1	21
Amenity greenspace		21%	32%	60%	0	67
Provision for children & young people		29%	42%	54%	0	52
Allotments		22%	27%	33%	0	12
Cemeteries		27%	31%	39%	0	11
<b>TOTAL</b>		<b>16%</b>	<b>-</b>	<b>73%</b>	<b>1</b>	<b>172</b>

Only one site rates below the threshold for value; Richfield Road. The sites overall appearance, access and use are questionable. All other sites rate above the threshold for value, reflecting the role and importance of open space provision to local communities and environments.

A high value site is considered to be one that is well used by the local community, well maintained (potentially with a balance for conservation), provides a safe environment and has features of interest; for example, good quality play equipment and landscaping. Sites that provide for a cross section of users and have a multi-functional use are considered a higher value than those offering limited functions and viewed as unattractive.

## 3.4 Summary

- ◀ 175 sites are identified as open space provision. This is equivalent to over 315 hectares.
- ◀ Of the 173 assessed sites, nearly two thirds (61%) rate above the quality threshold.
- ◀ Nearly all sites are assessed as above the value threshold; reflecting the importance of provision and its role offering social, environmental and health benefits.



# HERTSMERE BOROUGH COUNCIL

## OPEN SPACE ASSESSMENT

### PART 4: PARKS AND GARDENS

#### 4.1 Introduction

This typology often covers urban parks and formal gardens (including designed landscapes), which provide accessible high-quality opportunities for informal recreation and community events. Country park sites may also provide opportunities and functions often associated with parks and can therefore be included within this section (if present).

#### 4.2 Current provision

There are nine sites classified as parks and gardens in Hertsmere, the equivalent of over 109 hectares. No site size threshold has been applied and, as such, all known sites are included within the typology.

*Table 4.1: Distribution of parks*

Analysis area	Parks and gardens		
	Number	Size (ha)	Current provision (ha per 1,000 population)
Aldenham & Shenley	2	10.34	0.68
Borehamwood & Elstree	2	75.31	1.94
Bushey	3	9.63	0.36
Potters Bar	2	14.19	0.62
<b>Hertsmere</b>	<b>9</b>	<b>109.47</b>	<b>1.05</b>

Hertsmere has a current provision level of 1.05 hectares per 1,000 head of population. The largest site and the biggest contributor to provision is Aldenham Country Park (68 ha) in the Borehamwood & Elstree Analysis Area. This is followed by Shenley Park (8.47 ha) and King George Recreation Ground (8.29 ha).

Fields In Trust (FIT) suggests 0.80 hectares per 1,000 population as a guideline quantity standard. Table 4.1 shows that overall, Hertsmere is above this suggested standard.

If the larger Aldenham Country Park is omitted from the figures, as access to the site is only really able via car, the Borehamwood & Elstree Analysis Area has 0.17 hectares per 1,000 population. Hertsmere has 0.39 hectares per 1,000 population.

#### 4.3 Accessibility

Figure 4.1 overleaf shows the location of parks provision across Hertsmere with a 710m catchment applied. This is based on FIT recommended accessibility standards.

# HERTSMERE BOROUGH COUNCIL OPEN SPACE ASSESSMENT

Figure 4.1: Parks and gardens mapped with a 710m catchment applied

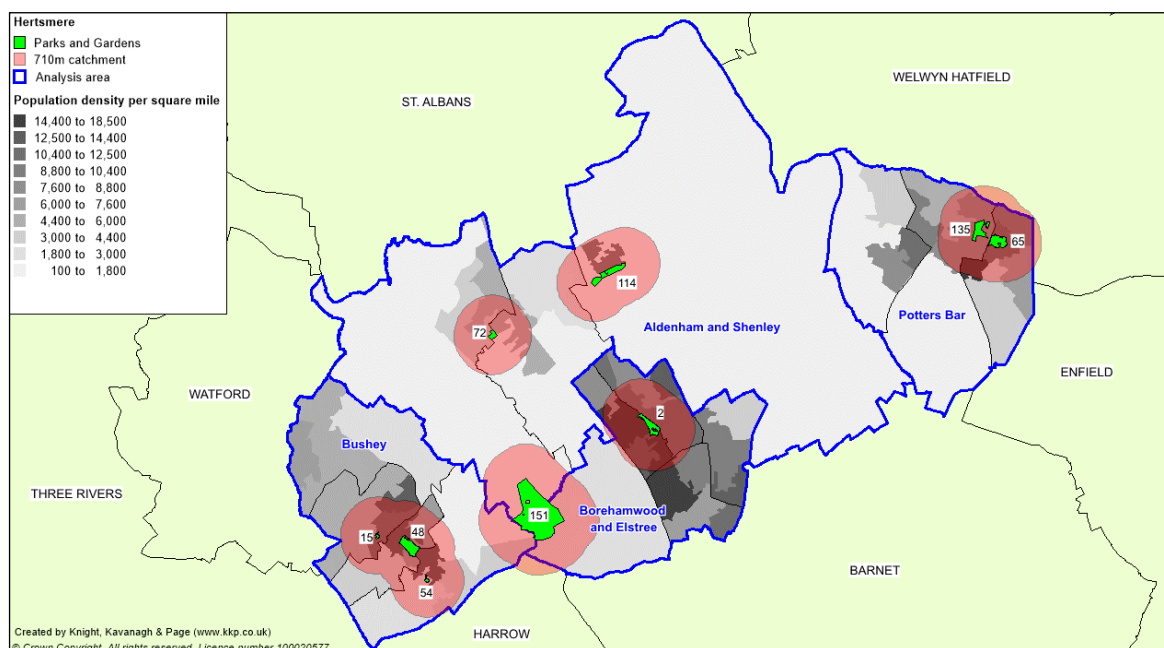


Table 4.2: Key to sites mapped

Site ID	Site name	Analysis area	Quality score	Value score
72	Phillimore recreation ground	Aldenham & Shenley	72.7%	59.1%
114	Shenley Park	Aldenham & Shenley	67.1%	72.7%
2	Aberford Park	Borehamwood & Elstree	76.7%	63.6%
151	Aldenham Country Park	Borehamwood & Elstree	80.8%	68.2%
15	Bushey Rose Garden	Bushey	80.9%	54.5%
48	King George Recreation Ground	Bushey	86.0%	68.2%
54	Mary Forsdyke Gardens	Bushey	68.9%	59.1%
65	Oakmere Park (including War Memorial)	Potters Bar	72.7%	68.2%
135	Parkfield, Potters Bar	Potters Bar	69.2%	54.5%

As can be seen in Figure 4.1, each analysis area has parks and gardens provision.

Borehamwood & Elstree is an area of high population density not fully covered by the suggested accessibility catchment.

# HERTSMERE BOROUGH COUNCIL

## OPEN SPACE ASSESSMENT

### 4.4 Quality

To determine whether sites are high or low quality (as recommended by best practice); scores from site assessments are colour-coded against a baseline threshold (high being green and low being red). The table overleaf summarises the results of the quality assessment for parks in Hertsmere. A threshold of 60% is applied in order to identify high and low quality. Further explanation of how the quality scores and thresholds are derived can be found in Part 2 (Methodology).

Table 4.3: Quality ratings for parks in Hertsmere.

Analysis area	Scores (%)			Spread	No. of sites	
	Lowest score	Average score	Highest score		Low <60%	High >60%
Aldenham and Shenley	67%	70%	73%	6%	0	2
Borehamwood & Elstree	77%	79%	81%	4%	0	2
Bushey	69%	79%	86%	17%	0	3
Potters Bar	69%	71%	73%	4%	0	2
<b>Hertsmere</b>	<b>67%</b>	<b>75%</b>	<b>86%</b>	<b>19%</b>	<b>0</b>	<b>9</b>

All nine parks in Hertsmere rate above the threshold. The highest scoring park in Hertsmere is King George Recreation Ground, with a score of 86%. The site has numerous sport facilities such as a multi-sports area, splash park and tennis courts. Also, it has lots of seating, including picnic areas, bins, toilets and car parking (including disabled parking).

Bushey Rose Garden (81%) is the second highest scoring site. It scores well for personal security, boundary fencing and signage. Like King George Recreation Ground, Bushey rose Garden also has the additional benefit of toilets; however, it does not contain play provision and is much smaller than the other parks in Hertsmere. This being said it is well-maintained with attractive landscaping.

Aldenham Country Park also rates highly for quality with a score of 81%. The site scores excellent for overall appearance, maintenance and paths and benefits from play equipment, car parking, seating and signage.

#### **Green Flag**

The Green Flag Award scheme is licensed and managed by Keep Britain Tidy. It provides national standards for parks and greenspaces across England and Wales. Public service agreements, identified by the Department for Communities and Local Government (DCLG) highlight the importance placed on Green Flag status as an indicator of high quality. This in turn impacts upon the way parks and gardens are managed and maintained.

A survey conducted by improvement charity GreenSpace highlights that parks with a Green Flag Award provide more satisfaction to members of the public compared to those sites without it. The survey of 16,000 park users found that more than 90% of Green Flag Award park visitors were very satisfied or satisfied with their chosen site, compared to 65% of visitors to non-Green Flag parks.

# HERTSMERE BOROUGH COUNCIL OPEN SPACE ASSESSMENT

---

# HERTSMERE BOROUGH COUNCIL

## OPEN SPACE ASSESSMENT

There are six park sites with a Green Flag Award. These include:

- ◀ Aberford Park
- ◀ Bushey Rose Garden
- ◀ King George Recreation Ground
- ◀ Mary Forsdyke Garden
- ◀ Oakmere Park
- ◀ Parkfield

### 4.5 Value

To determine whether sites are high or low value (as recommended by the Companion Guidance); the scores from the site assessments have been colour-coded against a baseline threshold (high being green and low being red). The table below summarises the results of the value assessment for parks in Hertsmere. A threshold of 20% is applied in order to identify high and low value. Further explanation of how the value scores are derived can be found in Part 2 (Methodology).

*Table 4.4: Value scores for parks by analysis area in Hertsmere*

Analysis area	Scores (%)			Spread	No. of sites	
	Lowest score	Average score	Highest score		Low	High
					<20%	>20%
Aldenham & Shenley	59%	66%	73%	14%	0	2
Borehamwood & Elstree	64%	66%	68%	4%	0	2
Bushey	55%	61%	68%	13%	0	3
Potters Bar	55%	61%	68%	13%	0	2
<b>Hertsmere</b>	<b>55%</b>	<b>63%</b>	<b>73%</b>	<b>18%</b>	<b>0</b>	<b>9</b>

All parks score above the threshold for value. Shenley Park scores the high for value (73%). The site benefits from additional economic value due to featuring a café on site. Other sites rating high for value include Aldenham Country Park (68%), King George Recreation Ground (68%) and Oakmere Park (68%).

Oakmere (including War Memorial) has a war memorial, adding cultural heritage value. It has two lakes, refreshment facilities, basketball hoop and outdoor fitness equipment, providing economic and amenity value.

Moreover, most parks have associated Friends groups and are Green Flag Award sites which adds value to the site. All parks provide opportunities for a wide range of users and demonstrate the high social inclusion, health benefits and sense of place that parks can offer.

One of the key aspects of the value placed on parks provision is their ability to function as a multipurpose form of open space provision. Parks provide opportunities for local communities and individuals to socialise and undertake a range of different activities, such as exercise, dog walking and taking children to the play area. Taking all this into account, parks and gardens are recognised as being heavily integrated into people's everyday lives.

### 4.6 Summary

#### **Parks and gardens**

- ◀ There are nine sites classified as parks and gardens; an equivalent of over 109 hectares.
- ◀ Fields in Trust (FIT) suggests 0.80 hectares per 1,000 population as a guideline quantity standard. Table 4.1 shows that overall, Hertsmere is above this suggested standard. This is predominantly due to Aldenham Country Park (at 68 hectares).
- ◀ Each of the four analysis areas have parks and gardens provision. Mapping demonstrates that a gap in catchment areas is noticeable to Borehamwood & Elstree.
- ◀ Six parks are Green Flag Award sites. Shenley Park has previously held a Green Flag Award.
- ◀ All sites score above the threshold for quality and are well maintained attractive sites, offering a range of amenities and facilities.
- ◀ All sites are assessed as being of high value, with the important social interaction, health benefits, historic value and sense of place sites offer being recognised.

# HERTSMERE BOROUGH COUNCIL

## OPEN SPACE ASSESSMENT

### PART 5: NATURAL AND SEMI-NATURAL GREENSPACE

#### 5.1 Introduction

The natural and semi-natural greenspace typology can include woodland (coniferous, deciduous, mixed) and scrub, grassland (e.g. down-land, meadow), heath or moor, wetlands (e.g. marsh, fen), wastelands (including disturbed ground), and bare rock habitats (e.g. cliffs, quarries, pits) and commons. Such sites are often associated with providing wildlife conservation, biodiversity and environmental education and awareness.

#### 5.2 Current provision

In total, 22 sites are identified as natural and semi-natural greenspace, totalling over 81 hectares of provision. These totals do not include all provision in the area as a site size threshold of 0.2 hectares has been applied. Sites smaller than this are likely to be of less or only limited recreational value to residents. However, they may still make a wider contribution to local areas in relation to quality of life and health and wellbeing.

Table 5.1: Distribution of natural and semi-natural greenspace

Analysis area	Natural and semi-natural		
	Number	Size (ha)	Current provision (ha per 1,000 population)
Aldenham & Shenley	8	10.23	0.67
Borehamwood & Elstree	5	39.59	1.02
Bushey	7	22.01	0.82
Potters Bar	2	9.57	0.42
<b>Hertsmere</b>	<b>22</b>	<b>81.41</b>	<b>0.78</b>

The largest of the natural and semi-natural greenspace sites is Parkfields (including Allum Lane Spinney) at 20 hectares. The site accounts for 25% of the total provision of natural and semi-natural greenspace.

Fields In Trust (FIT) suggests 1.80 hectares per 1,000 population as a guideline quantity standard. Table 5.1 shows that Hertsmere is below this suggested standard.

#### 5.3 Accessibility

Figure 5.1 overleaf shows the location of natural and semi-natural provision across Hertsmere with a 720m catchment applied. This is based on FIT recommended accessibility standards.

# HERTSMERE BOROUGH COUNCIL OPEN SPACE ASSESSMENT

Figure 5.1: Natural and semi-natural sites mapped with a 720m catchment applied

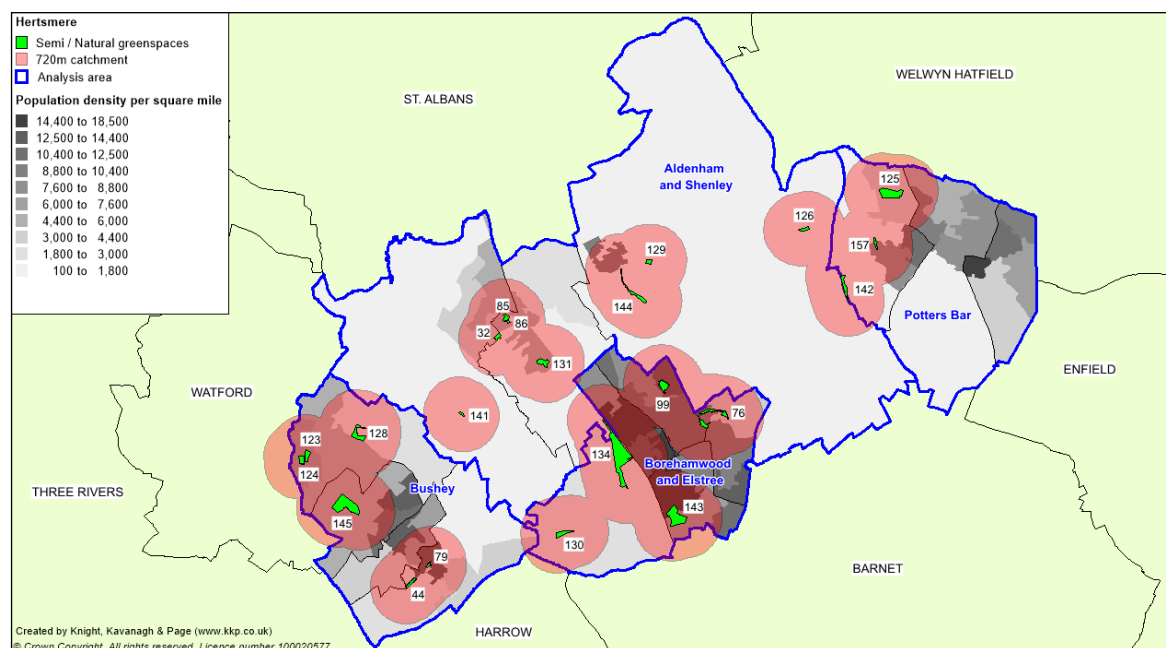


Table 5.2: Key to sites mapped

Site ID	Site name	Analysis area	Quality score	Value score
32	Fir Spring wood	Aldenham and Shenley	25.1%	26.4%
85	Scrubbitts Wood (North)	Aldenham and Shenley	41.8%	30.0%
86	Scrubbitts Wood (South)	Aldenham and Shenley	47.5%	35.5%
126	Brookside Wood and Meadow	Aldenham and Shenley	56.0%	30.9%
129	Hillcrest Road NSN	Aldenham and Shenley	48.1%	25.5%
131	Wellhouse Dell	Aldenham and Shenley	26.2%	20.9%
141	Letchmore Heath pond	Aldenham and Shenley	63.1%	50.0%
144	Woodhall Lane Spinney	Aldenham and Shenley	55.7%	45.5%
76	Potters Wood	Borehamwood and Elstree	47.3%	31.8%
99	Thirskcliffe Nature Park	Borehamwood and Elstree	58.2%	30.0%
130	Composers Park	Borehamwood and Elstree	47.5%	30.9%
134	Parkfields	Borehamwood and Elstree	52.7%	40.0%
143	Woodcock Hill village green	Borehamwood and Elstree	52.7%	35.5%
44	Hillmead Nature Park	Bushey	36.9%	30.9%
79	Richfield Road	Bushey	27.9%	15.5%
123	Fishers Field Nature Reserve	Bushey	68.6%	45.5%
124	Fishers Park	Bushey	64.2%	45.5%
128	Hartspring Meadow	Bushey	56.6%	30.0%
145	Bushey Manor Field	Bushey	45.1%	25.5%
157	Kimptons Mead Nature Area	Potters Bar	43.4%	26.4%
125	Furzefield Wood and Meadow	Potters Bar	54.1%	30.9%
142	Wash Lane Common	Potters Bar	57.7%	26.4%



# HERTSMERE BOROUGH COUNCIL

## OPEN SPACE ASSESSMENT

Mapping shows that all analysis areas have natural and semi-natural provision. Whilst there are gaps against catchment mapping within the Potters Bar and the Borehamwood & Elstree analysis areas, these gaps are generally served by parks and gardens and amenity greenspace provision.

### 5.4 Quality

To determine whether sites are high or low quality (as recommended by the Companion Guidance) scores from the site assessments are colour-coded against a baseline threshold (high being green and low being red). The table below summarises the results of the quality assessment for natural and semi-natural greenspace in Hertsmere. A threshold of 45% is applied in order to identify high and low quality. Further explanation of how the quality scores are derived can be found in Part 2 (Methodology).

Table 5.3: Quality ratings for natural and semi-natural greenspace in Hertsmere

Analysis area	Scores (%)			Spread	No. of sites	
	Lowest score	Average score	Highest score		<45%	>45%
Aldenham and Shenley	25%	45%	63%	38%	3	5
Borehamwood and Elstree	47%	52%	58%	11%	0	5
Bushey	28%	49%	69%	41%	3	4
Potters Bar	54%	56%	58%	3%	0	2
<b>Hertsmere</b>	<b>25%</b>	<b>49%</b>	<b>69%</b>	<b>44%</b>	<b>6</b>	<b>16</b>

Natural and semi-natural greenspace has a lower quality threshold than some other open space typologies such as parks. This reflects the wide-ranging characteristics of provision. For instance, natural and semi-natural sites can be intentionally without ancillary facilities in order to reduce misuse/inappropriate behaviour whilst encouraging greater conservation.

Of assessed natural and semi-natural provision, a total of six sites (27%) in Hertsmere rate below the threshold set for quality. There are 16 sites rating above the quality threshold applied.

All sites scoring below the threshold for quality tend to be devoid of basic ancillary features such as benches and bins. However, as previously mentioned, this can be due to their purpose as a habitat and even some higher scoring sites lack such features.

The lowest scoring sites are:

- ✦ Fir Spring wood (25%)
- ✦ Wellhouse Dell (26%)
- ✦ Richfield Road (28%)
- ✦ Hillmead Nature Park (37%)

The sites lack ancillary features with Fir Spring Wood also noted as having lots of litter. Consequently, they score lower for overall maintenance and cleanliness. Hillmead rates slightly higher as it scores better for overall maintenance, paths and entrance scores.

# HERTSMERE BOROUGH COUNCIL

## OPEN SPACE ASSESSMENT

Most sites scoring above the threshold are observed as being attractive due to the perceived higher levels of maintenance and cleanliness; often a reflection of their apparent regular use by people. The highest scoring sites above the quality threshold are:

- ✦ Fishers Field Nature Reserve (69%)
- ✦ Fishers Park (64%)
- ✦ Letchmore Heath Pond (63%)
- ✦ Thirskcliffe Nature Park (58%)

The sites are viewed as well maintained and appearing to be well used. The Thirskcliffe Nature Park is observed as having the potential for its pathways to be better.

### 5.5 Value

To determine whether sites are high or low value (as recommended by the Companion Guidance) scores from site assessments have been colour-coded against a baseline threshold (high being green and low being red). The table below summarises the results of the value assessment for natural and semi-natural greenspace in Hertsmere. A threshold of 20% is applied in order to identify high and low value. Further explanation of how the value scores are derived can be found in Part 2 (Methodology).

*Table 5.4: Value scores for natural and semi-natural greenspace in Hertsmere*

Analysis area	Scores (%)			Spread	No. of sites	
	Lowest score	Average score	Highest score		<20%	>20%
Aldenham & Shenley	21%	33%	50%	29%	0	8
Borehamwood & Elstree	3%	34%	40%	10%	0	5
Bushey	16%	31%	46%	20%	1	6
Potters Bar	26%	29%	31%	5%	0	2
<b>Hertsmere</b>	<b>16%</b>	<b>32%</b>	<b>50%</b>	<b>34%</b>	<b>1</b>	<b>21</b>

Only one site rates below the threshold for value; Richfield Road. The sites overall appearance, access and use are questionable. All other natural and semi-natural greenspace sites rate above the threshold for value.

The highest scoring sites for value are:

- ✦ Letchmore Heath pond (50%)
- ✦ Fishers Park (46%)
- ✦ Fishers Field Nature Reserve (46%)
- ✦ Woodhall Lane Spinney (46%)

Each site scores highly for ecological value as they provide a variety of habitats. All are observed as generally attractive forms of provision. Each provide good dog walking areas and are well used. Letchmore Heath has interpretation boards and other features such as seating providing additional amenity value benefits.

# HERTSMERE BOROUGH COUNCIL

## OPEN SPACE ASSESSMENT

---

The high proportion of sites to rate above the threshold for value demonstrates the added benefit natural and semi-natural greenspaces can provide especially in terms of contributing to flora and fauna promotion. Sites are recognised as providing habitat opportunities whilst also offering opportunities to informal recreational activities. Prominent sites of this type can even act as destination sites, attracting users from other areas of Hertsmere.

### 5.6 Summary

#### **Natural and semi-natural greenspace summary**

- ◀ In total, there are 22 natural and semi-natural greenspace sites covering over 81 hectares.
- ◀ Whilst there are gaps against catchment mapping within both the Potters Bar and the Borehamwood & Elstree analysis areas, these gaps are generally served by parks and gardens and amenity provision.
- ◀ Of natural and semi-natural sites assessed, a total of 16 sites (73%) rate above the threshold set for quality. There are six sites that rate below the quality threshold applied.
- ◀ Nearly all sites rate above the threshold for value. This demonstrates the added benefit natural and semi-natural greenspaces can provide especially in terms of contributing to flora and fauna whilst also providing recreational opportunities.

# HERTSMERE BOROUGH COUNCIL OPEN SPACE ASSESSMENT

## PART 6: AMENITY GREENSPACE

### 6.1 Introduction

This is defined as sites offering opportunities for informal activities close to home or work or enhancement of the appearance of residential or other areas. It includes informal recreation spaces, housing green spaces, village greens and other incidental space.

### 6.2 Current provision

There are 67 amenity greenspace sites in Hertsmere equivalent to over 73 hectares of provision. Sites are most often found within areas of housing and function as informal recreation space or open space along highways providing a visual amenity. A number of recreation grounds and playing fields are also classified as amenity greenspace.

*Table 6.1: Distribution of amenity greenspace*

Analysis area	Amenity greenspace		
	Number	Size (ha)	Current provision (ha per 1,000 population)
Aldenham & Shenley	15	8.49	0.56
Borehamwood & Elstree	34	42.05	1.08
Bushey	9	12.14	0.45
Potters Bar	9	10.33	0.55
<b>Hertsmere</b>	<b>67</b>	<b>73.02</b>	<b>0.70</b>

It is important to note that whilst a large proportion of provision may be considered as being smaller grassed areas or roadside verges, there is some variation of sites within this typology. For example, small sites such as St Albans Road war memorial at 0.04 hectares, to the largest, Furzefield at over six hectares. Larger recreation grounds and playing fields serve a different purpose to smaller grassed areas and verges; often providing an extended range of opportunities for recreational and sporting activities due to their size.

Fields In Trust (FIT) suggests a guideline quantity standard of 0.60 hectares per 1,000 population. Table 6.1 shows that overall, Hertsmere is above this suggested standard.

### 6.3 Accessibility

Figure 6.1 overleaf shows the location of amenity greenspace sites across Hertsmere with a 480m catchment applied. This is based on FIT recommended accessibility standards.

# HERTSMERE BOROUGH COUNCIL OPEN SPACE ASSESSMENT

Figure 6.1: Amenity greenspace sites mapped with a 480m catchment applied

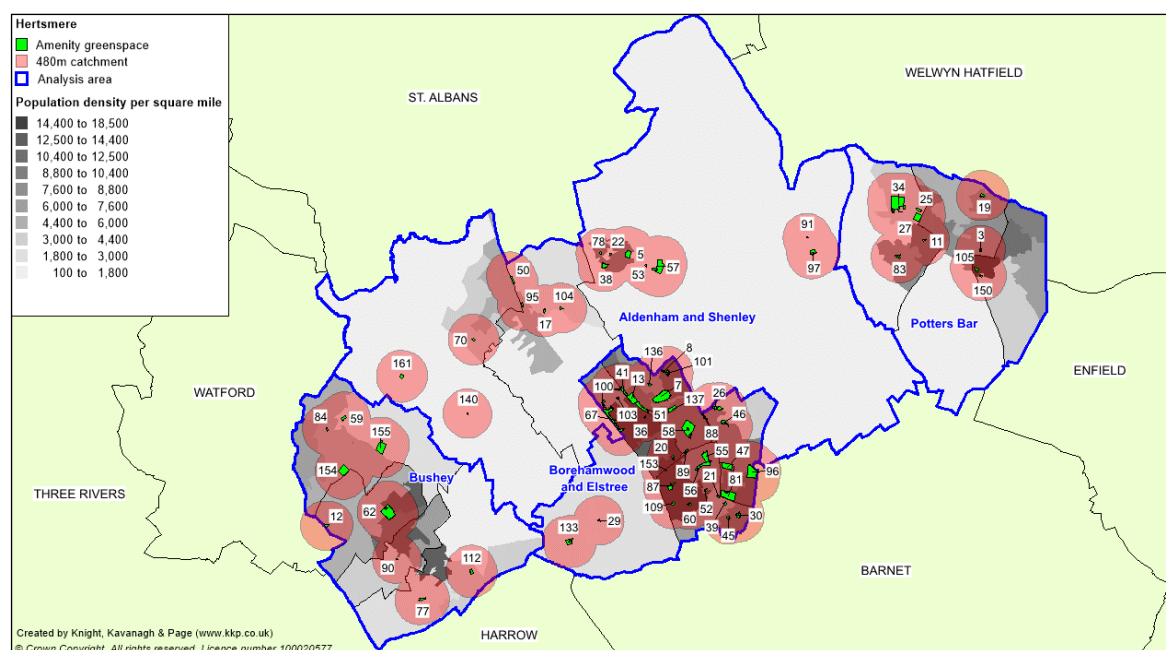


Table 6.2: Key to sites mapped

Site ID	Site name	Analysis area	Quality score	Value score
5	Andrew Close	Aldenham & Shenley	36.8%	34.0%
17	Canons Close	Aldenham & Shenley	37.2%	28.0%
22	Cockle Way	Aldenham & Shenley	29.8%	23.0%
38	Grace Avenue	Aldenham & Shenley	54.3%	33.0%
50	Lauteral Green (Tykeside Gardens)	Aldenham & Shenley	56.2%	38.0%
53	London Road war memorial/pond	Aldenham & Shenley	51.9%	38.0%
57	Harris Lane	Aldenham & Shenley	38.0%	27.0%
70	Phillimore Place Square	Aldenham & Shenley	53.2%	29.0%
72	Phillimore recreation ground	Aldenham & Shenley	83.5%	60.0%
78	Ribston Close	Aldenham & Shenley	40.5%	22.0%
91	St Albans Road war memorial	Aldenham & Shenley	50.4%	29.0%
95	Station Road, Watling Street	Aldenham & Shenley	63.6%	39.0%
97	Glebeland	Aldenham & Shenley	48.5%	21.0%
104	Williams Way	Aldenham & Shenley	45.2%	23.0%
140	The Green, Letchmore Heath	Aldenham & Shenley	59.5%	33.0%
161	The Crescent, Aldenham	Aldenham & Shenley	58.0%	39.0%
7	Aycliffe Park	Borehamwood & Elstree	53.7%	48.0%
8	Ayot Path/Stapleton Road	Borehamwood & Elstree	44.2%	29.0%
13	Brook Meadow	Borehamwood & Elstree	56.6%	38.0%
20	Clarendon Park	Borehamwood & Elstree	55.8%	34.0%
21	Cleveland Crescent	Borehamwood & Elstree	45.5%	22.0%
26	Potterswood Park	Borehamwood & Elstree	71.9%	38.0%

# HERTSMERE BOROUGH COUNCIL OPEN SPACE ASSESSMENT

Site ID	Site name	Analysis area	Quality score	Value score
29	Elstree Hill North war memorial	Borehamwood & Elstree	49.6%	24.0%
30	Farriers Way open space	Borehamwood & Elstree	57.8%	34.0%
36	Gateshead Road/Beech Drive	Borehamwood & Elstree	38.4%	22.0%
39	Grantham Green	Borehamwood & Elstree	45.9%	32.0%
41	Haggerston Park	Borehamwood & Elstree	75.2%	33.0%
45	Hunter Close	Borehamwood & Elstree	40.5%	27.0%
46	Kelly Court (Studio Way estate)	Borehamwood & Elstree	64.9%	39.0%
47	Kenilworth Park	Borehamwood & Elstree	64.5%	39.0%
51	Leeming Park	Borehamwood & Elstree	47.1%	34.0%
52	Lemsford Court	Borehamwood & Elstree	51.2%	28.0%
55	Maxwell Hillside Park (North)	Borehamwood & Elstree	61.2%	39.0%
56	Maxwell Hillside Park (South)	Borehamwood & Elstree	64.2%	29.0%
58	Meadow Park	Borehamwood & Elstree	86.1%	55.0%
60	Milton Drive (24-50)	Borehamwood & Elstree	43.8%	29.0%
67	Organ Hall open space	Borehamwood & Elstree	65.3%	39.0%
81	Ripon Park	Borehamwood & Elstree	63.1%	49.0%
87	Shakespeare Drive	Borehamwood & Elstree	70.3%	24.0%
88	Shenley Road	Borehamwood & Elstree	52.1%	30.0%
89	Shenley Road war memorial	Borehamwood & Elstree	47.4%	33.0%
96	Tempsford Green	Borehamwood & Elstree	52.6%	28.0%
100	Tomkins Close/Bairstow Close	Borehamwood & Elstree	48.3%	29.0%
101	Walshford Green	Borehamwood & Elstree	46.6%	38.0%
103	Wetherby Road	Borehamwood & Elstree	37.2%	21.0%
109	Wordsworth Gardens	Borehamwood & Elstree	43.0%	29.0%
133	Composers Field	Borehamwood & Elstree	49.6%	34.0%
134	Parkfields	Borehamwood & Elstree	41.3%	29.0%
136	The Champions	Borehamwood & Elstree	55.0%	28.0%
137	Crown Road	Borehamwood & Elstree	47.9%	25.0%
153	Town Centre Garden	Borehamwood & Elstree	52.1%	28.0%
12	Boundary Green	Bushey	63.6%	28.0%
59	Millbrook Road (Forest Walk)	Bushey	57.3%	35.0%
62	The Moatfield Recreation Ground	Bushey	89.8%	50.0%
77	Prowse Avenue (22 and 24)	Bushey	39.7%	28.0%
84	Scottswood Close	Bushey	43.0%	23.0%
90	Sparrows Herne war memorial	Bushey	46.3%	23.0%
112	Windmill Lane Recreation Ground	Bushey	55.1%	43.0%
154	Bushey Grove	Bushey	40.5%	24.0%
155	Little Bushey Lane	Bushey	31.4%	29.0%
3	Abingdon Place	Potters Bar	37.2%	29.0%
11	Berkeley Close	Potters Bar	29.8%	28.0%
19	Church Road/Osborne Road	Potters Bar	48.8%	24.0%

# HERTSMERE BOROUGH COUNCIL OPEN SPACE ASSESSMENT

Site ID	Site name	Analysis area	Quality score	Value score
25	Cranborne Crescent	Potters Bar	47.9%	27.0%
27	Elm Court Community Centre	Potters Bar	58.7%	29.0%
34	Furzefield	Potters Bar	79.1%	40.0%
83	Rushfield	Potters Bar	49.6%	23.0%
105	Willow Way	Potters Bar	47.1%	39.0%
150	Ashwood Road	Potters Bar	39.7%	28.0%

Mapping shows that all analysis areas in Hertsmere are generally well served by amenity greenspace provision based on a 480m catchment. Minor gaps are observed to the Bushey and Potters Bar analysis areas. However, these are likely to be served by other forms of provision such as parks and gardens or natural and semi-natural greenspace provision.

## 6.4 Quality

To determine whether sites are high or low quality (as recommended by the Companion Guidance); the scores from site assessments have been colour-coded against a baseline threshold (high being green and low being red). The table below summarises the results of the quality assessment for amenity greenspaces in Hertsmere. A threshold of 50% is applied in order to identify high and low quality. Further explanation of how the quality scores and thresholds are derived can be found in Part 2 (Methodology).

Table 6.3: Quality ratings for amenity greenspace in Hertsmere

Analysis area	Scores (%)			Spread	No. of sites	
	Lowest score	Average score	Highest score		<50%	>50%
Aldenham & Shenley	30%	48%	64%	34%	7	8
Borehamwood & Elstree	37%	54%	86%	49%	15	19
Bushey	31%	52%	90%	59%	5	4
Potters Bar	30%	49%	79%	49%	7	2
<b>Hertsmere</b>	<b>30%</b>	<b>52%</b>	<b>90%</b>	<b>60%</b>	<b>34</b>	<b>33</b>

A total of 49% of amenity greenspace sites in Hertsmere rate above the threshold for quality. The highest scoring sites for quality are:

- ↳ The Moatfield Recreation Ground (90%)
- ↳ Meadow Park (86%)
- ↳ King George V Field, Potters Bar (79%)

The three sites are observed as having good levels of maintenance and cleanliness, resulting in a positive overall appearance. In addition, they provide user security as well as recreational opportunities.

The sites all have bins to prevent excessive littering as well as seating. These add to the quality and use of the sites. In addition, Meadow Park and King George V Field also feature sports provision. Each site has good signage and benches as well as having car parking.



# HERTSMERE BOROUGH COUNCIL

## OPEN SPACE ASSESSMENT

HBC report having invested significantly in Meadow Park, particularly in the play provision. The aspiration is for this site to become a Green Flag Award site.

Sites scoring below the threshold are generally smaller in size and are observed as being basic pockets of green space. However, despite having little recreational use and fewer ancillary facilities, it is important to recognise they may provide a visual amenity. The lowest scoring amenity greenspace sites in Hertsmere are:

- ◀ Berkeley Close (30%)
- ◀ Cockle Way (30%)
- ◀ Little Bushey Lane (31%)
- ◀ Andrew Close (37%)

These sites lack ancillary features (e.g. seating, bins) and formal pathways. They also score lower for entrances. Berkeley Close is observed as having uneven ground.

Most sites scoring below the threshold have no significant issues but serve more as a visual amenity or cut through.

It is important to recognise that despite some sites rating below the threshold for quality, they may still have the potential to be important to the community. For instance, if a site is the only form of open space in that local area it may be of higher value given it is the only provision of its type. It may also provide a visual function. These kinds of open spaces can have a wider contribution to local areas, in relation to community viability, quality of life and health and wellbeing.

### 6.5 Value

To determine whether sites are high or low value (as recommended by the Companion Guidance) site assessments scores are colour-coded against a baseline threshold (high being green and low being red). The table below summarises the results. A threshold of 20% is applied in order to identify high and low value. Further explanation of the value scoring and thresholds can be found in Part 2 (Methodology).

*Table 6.4: Value ratings for amenity greenspace in Hertsmere*

Analysis area	Scores (%)			Spread	No. of sites	
	Lowest score	Average score	Highest score		<20%	>20%
Aldenham & Shenley	21%	30%	39%	18%	0	15
Borehamwood & Elstree	21%	33%	55%	34%	0	34
Bushey	23%	31%	50%	27%	0	9
Potters Bar	23%	30%	40%	17%	0	9
<b>Hertsmere</b>	<b>21%</b>	<b>32%</b>	<b>60%</b>	<b>39%</b>	<b>0</b>	<b>67</b>

All amenity greenspaces rate above the threshold for value.

Some of the highest scoring sites for value in Hertsmere are:

- ◀ Meadow Park (55%)
- ◀ The Moatfield Recreation Ground (50%)
- ◀ Ripon Park (49.0%)



# HERTSMERE BOROUGH COUNCIL

## OPEN SPACE ASSESSMENT

---

Meadow Park (55%) scores the highest for value. The site is an attractive greenspace, containing sports provision and excellent play area facilities which meet the needs of several users. The other high value scoring sites of Moatfield Recreation Ground and Ripon Park also benefit from offering sport and play opportunities, which enhances their amenity and social value.

Amenity greenspace should be recognised for its multi-purpose function, offering opportunities for a variety of leisure and recreational activities. It can often accommodate informal recreational activity such as casual play and dog walking. Some sites in Hertsmere offer a dual function and are amenity resources for residents as well as being visually pleasing. These attributes add to the quality, accessibility and visibility of amenity greenspace. Combined with the presence of facilities (e.g. seating, landscaping and trees) this means that the better-quality sites are likely to be more respected and valued by the local community.

### 6.6 Summary

#### **Amenity greenspace summary**

- ◀ There are 67 amenity greenspace sites in Hertsmere; over 73 hectares of provision.
- ◀ Mapping shows that all analysis areas in Hertsmere are generally well served by amenity greenspace provision based on a 480m catchment.
- ◀ Nearly half (49%) of amenity greenspace sites in Hertsmere rate above the threshold for quality. Several of the low scoring sites are marginally below the threshold.
- ◀ The majority of sites scoring below the threshold are smaller sites and are observed as being basic, small pockets of green space and lack ancillary features.
- ◀ In addition to its multifunctional role, amenity greenspace makes a valuable contribution to visual aesthetics for communities – hence all sites rate above the value threshold.

# HERTSMERE BOROUGH COUNCIL

## OPEN SPACE ASSESSMENT

### PART 7: PROVISION FOR CHILDREN AND YOUNG PEOPLE

#### 7.1 Introduction

This includes areas designated primarily for play and social interaction involving children and young people, such as equipped play areas, ball courts, skateboard areas and teenage shelters.

Provision for children is deemed to be sites consisting of formal equipped play facilities typically associated with play areas. This is usually perceived to be for children under 12 years of age. Provision for young people can include equipped sites that provide more robust equipment catering to older age ranges incorporating facilities such as skate parks, BMX, basketball courts, youth shelters and MUGAs.

#### 7.2 Current provision

A total of 53 sites in Hertsmere are identified as provision for children and young people. This combines to create a total of over five hectares. No site size threshold has been applied and as such all known provision is identified and included within the audit.

*Table 7.1: Distribution of accessible provision for children and young people*

Analysis area	Provision for children and young people		
	Number	Size (ha)	Current provision (ha per 1,000 population)
Aldenham & Shenley	12	1.63	0.11
Borehamwood & Elstree	27	2.41	0.06
Bushey	8	1.04	0.04
Potters Bar	6	0.72	0.03
<b>Hertsmere</b>	<b>53</b>	<b>5.80</b>	<b>0.06</b>

There is one play site included which is identified as having limited access: Aldenham Country Park Adventure Playground. The facility is only open for certain times of the day and carries an entrance fee.

Fields in Trust (FIT) suggests 0.25 hectares per 1,000 population as a guideline quantity standard for equipped/designated play areas and 0.30 hectares per 1,000 population for other outdoor provision (i.e. MUGAs and skate parks).

Overall, Hertsmere has a current provision level of 0.06 hectares per 1,000 population which is below the recommended benchmarks.

#### 7.3 Accessibility

Figure 7.1 shows the location of provision for children and young people across Hertsmere based on FIT accessibility standards; LAP - 100m, LEAP - 400m and NEAP (including skateparks) - 1,000m.

FIT also suggest a 700m catchment for other outdoor provision (MUGAs and skate parks). However, it is considered that users are more likely to travel further to reach such forms of provision. In addition, such forms of provision are often part of a site categorised as a NEAP. Consequently, the 1,000m catchment has been applied.

# HERTSMERE BOROUGH COUNCIL OPEN SPACE ASSESSMENT

Figure 7.1: Provision and children for young people mapped against FIT standard

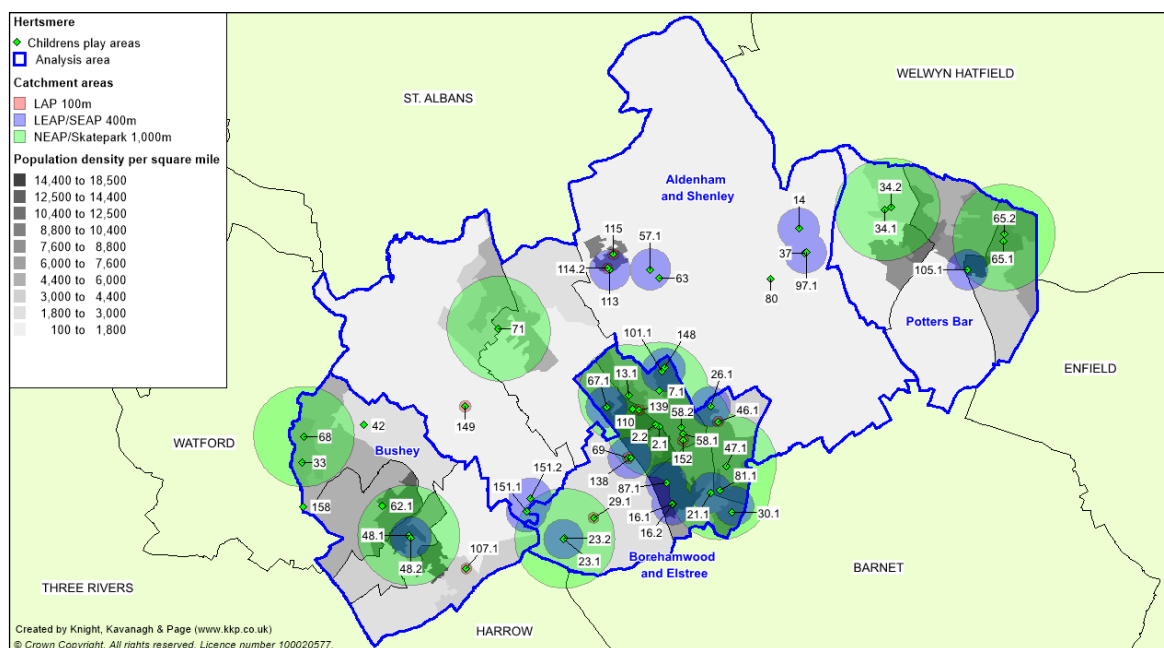


Table 7.2: Key to sites mapped\*

Site ID	Site name	Sub-typology	Analysis area	Quality score	Value score
14	Brookside Play Area	LEAP	Aldenham & Shenley	60.5%	38.2%
37	Glebelands play area	LEAP	Aldenham & Shenley	65.6%	41.8%
63	Newcome (Anderson) Road play area	NEAP	Aldenham & Shenley	76.6%	38.2%
71	Phillimore play area	NEAP	Aldenham & Shenley	80.4%	50.9%
80	Ridge play area	LAP	Aldenham & Shenley	70.4%	38.2%
57.1	Harris Lane play area	LEAP	Aldenham & Shenley	67.0%	38.2%
113	Shenley Park play area	LEAP	Aldenham & Shenley	64.3%	47.3%
114.2	Shenley Park play area 2	LEAP	Aldenham & Shenley	48.5%	54.5%
115	Greenwood Gardens play area	LAP	Aldenham & Shenley	54.6%	38.2%
149	Back Lane play area	LAP	Aldenham & Shenley	46.4%	34.5%
151.1	Aldenham Country Park play area	LEAP	Aldenham & Shenley	61.9%	54.5%
151.2	Aldenham Country Park Adventure Playground	LEAP	Aldenham & Shenley		
2.1	Aberford Park play areas	NEAP	Borehamwood & Elstree	76.3%	45.5%
2.2	Aberford Park skate park	Youth provision	Borehamwood & Elstree	78.0%	41.8%
7.1	Aycliffe Park exercise equip.	NEAP	Borehamwood & Elstree	46.4%	38.2%
13.1	Brook Meadow play area	NEAP	Borehamwood & Elstree	60.1%	38.2%

\* Note some sites have been merged where there are multiple forms of provision at one site

# HERTSMERE BOROUGH COUNCIL OPEN SPACE ASSESSMENT

Site ID	Site name	Sub-typology	Analysis area	Quality score	Value score
16.1	Byron Avenue MUGA	MUGA	Borehamwood & Elstree	56.0%	29.1%
16.2	Byron Avenue play area	LEAP	Borehamwood & Elstree		
21.1	Paxton Court play area	LEAP	Borehamwood & Elstree	40.2%	41.8%
23.1	Composers kick about area	NEAP	Borehamwood & Elstree	69.8%	38.2%
23.2	Composers Park play area		Borehamwood & Elstree		
26.1	Potterswood Park play area	LEAP	Borehamwood & Elstree	72.2%	38.2%
29.1	Elstree Hill North play area	LAP	Borehamwood & Elstree	36.4%	38.2%
30.1	Farriers Way play area	LAP	Borehamwood & Elstree	66.0%	41.8%
40	Hackney Close MUGA	LEAP	Borehamwood & Elstree	57.7%	38.2%
46.1	Kelly Court play area	LAP	Borehamwood & Elstree	76.3%	38.2%
47.1	Kenilworth Park play area	NEAP	Borehamwood & Elstree	71.5%	41.8%
58.1	Meadow Park play area	NEAP	Borehamwood & Elstree	76.3%	54.5%
58.2	Meadow Park play area 2	NEAP	Borehamwood & Elstree	79.0%	54.5%
67.1	Organ Hall play area	LEAP	Borehamwood & Elstree	77.0%	38.2%
69	Parkfields play area	LEAP	Borehamwood & Elstree	61.9%	38.2%
81.1	Ripon Park play area	NEAP	Borehamwood & Elstree	66.3%	45.5%
87.1	Shakespeare Drive play area	LEAP	Borehamwood & Elstree	75.3%	41.8%
101.1	Walshford Green	LEAP	Borehamwood & Elstree	43.3%	41.8%
110	Eaton Way Play area	LAP	Borehamwood & Elstree	56.7%	41.8%
138	Parkfields MUGA	LEAP	Borehamwood & Elstree	40.2%	38.2%
139	Winthorpe Gardens play area	LAP	Borehamwood & Elstree	75.3%	41.8%
148	Stanborough Avenue play areas	LEAP	Borehamwood & Elstree	57.7%	41.8%
152	Baker Court play area	LAP	Borehamwood & Elstree	44.3%	38.2%
33	Fishers Park play area	LAP	Bushey	83.8%	41.8%
42	Hartswood Close play area	LAP	Bushey	52.9%	29.1%
48.1	King George Recreation Ground play area	NEAP	Bushey	83.2%	54.5%
48.2	King George Recreation Ground MUGA	MUGA	Bushey		
62.1	Moatfield play area (inc shelter)	NEAP	Bushey	82.8%	45.5%
68	Park Avenue play area	NEAP	Bushey	69.4%	38.2%
107.1	Windmill Lane Recreation Ground play area	LAP	Bushey	46.0%	29.1%
158	Three Valleys Way play area	LEAP	Bushey	60.5%	41.8%
34.1	Furzefield play area	NEAP	Potters Bar	78.0%	45.5%
34.2	Furzefield skatepark	Skatepark	Potters Bar	44.3%	41.8%
65.1	Oakmere Park play area	NEAP	Potters Bar	59.8%	54.5%

# HERTSMERE BOROUGH COUNCIL OPEN SPACE ASSESSMENT

Site ID	Site name	Sub-typology	Analysis area	Quality score	Value score
65.2	Oakmere Park play area 2	NEAP	Potters Bar	70.4%	54.5%
97.1	Glebelands basketball court	NEAP	Potters Bar	45.4%	38.2%
105.1	Willow Way play area	LAP	Potters Bar	74.6%	41.8%

Mapping identifies that there is a generally good distribution of all forms of play provision across Hertsmere. There are some minor gaps in catchment mapping; however, these are not considered to be of concern.

## 7.4 Quality

In order to determine whether sites are high or low quality (as recommended by guidance); the scores from the site assessments have been colour-coded against a baseline threshold (high being green and low being red). The table below summarises the results of the quality assessment for play provision for children and young people in Hertsmere. A threshold of 45% is applied in order to identify high and low quality. Further explanation of the quality scoring and thresholds can be found in Part 2 (Methodology).

*Table 7.3: Quality ratings for provision for children and young people in Hertsmere*

Analysis area	Scores (%)			Spread	No. of sites	
	Lowest score	Average score	Highest score		<60%	>60%
Aldenham & Shenley	46%	63%	80%	34%	3	8
Borehamwood & Elstree	36%	62%	79%	43%	10	17
Bushey	46%	68%	84%	38%	2	6
Potters Bar	44%	62%	78%	33%	3	3
<b>Hertsmere</b>	<b>36%</b>	<b>64%</b>	<b>84%</b>	<b>48%</b>	<b>18</b>	<b>34</b>

Quality of provision is generally good across Hertsmere with 65% of sites assessed as above the threshold. There are 18 sites rating below the threshold. Notably there is a significant spread (48%) between the highest and lowest scoring sites, with Elstree Hill North play area (36%) compared to Fishers Park play area (84%).

Examples of other high scoring sites include King George Recreation Ground play area (83%), Moatfield Park play area (83%) and Phillimore play area (80%).

A site worth referencing is Meadow Park Play Area, which receives a quality score of 79%. The Council reports having invested significantly in this site, with further investment to come. As such, it is likely to increase further in both quality and value in the near future.

Elstree Hill North play area (36%) and Paxton Close play area (40%) score the lowest for quality due being smaller and dated sites offering less diverse equipment. The sites also lack ancillary features such as seating, bins and/or signage.

# HERTSMERE BOROUGH COUNCIL

## OPEN SPACE ASSESSMENT

### 7.5 Value

To determine whether sites are high or low value (as recommended by the Companion Guidance) site assessment scores are colour-coded against a baseline threshold (high being green and low being red). The table overleaf summarises the results of the value assessment for children and young people in Hertsmere. A threshold of 20% is applied in order to identify high and low value. Further explanation of the value scoring and thresholds can be found in Part 2 (Methodology).

*Table 7.4: Value ratings for provision for children and young people in Hertsmere*

Analysis area	Scores (%)			Spread	No. of sites	
	Lowest score	Average score	Highest score		<20%	>20%
Aldenham and Shenley	34%	43%	54%	20%	0	11
Borehamwood and Elstree	29%	41%	54%	25%	0	27
Bushey	29%	40%	54%	25%	0	8
Potters Bar	38%	45%	54%	13%	0	6
<b>Hertsmere</b>	<b>29%</b>	<b>42%</b>	<b>54%</b>	<b>25%</b>	<b>0</b>	<b>52</b>

All play provision in Hertsmere is rated as being above the threshold for value. This demonstrates the role play provision provides in allowing children to play but also the contribution sites make in terms of giving children and young people safe places to learn, for physical and mental activity, to socialise with others and in creating aesthetically pleasing local environments.

Sites scoring particularly high for value tend to reflect a good range of quality equipment available at sites:

- ✦ Meadow Park play area 1 and 2 (55%)
- ✦ King George Recreation Ground play area (55%)
- ✦ Shenley Park play area 2 (55%)
- ✦ Aldenham Country Park play area (55%)
- ✦ Phillimore play area (51%)
- ✦ Oakmere Park play area 2 (51%)

The sites are observed as being well maintained with a good to reasonable variety of equipment, as well as having sufficient access. The sites are also assumed to be well used given their range and quality of equipment.

Diverse equipment to cater for a range of ages and abilities is important and can significantly impact on value. Provision such as skate park facilities and MUGAs are often highly valued forms of play.

# HERTSMERE BOROUGH COUNCIL

## OPEN SPACE ASSESSMENT

---

It is also important to recognise the benefits of play in terms of healthy, active lifestyles, social inclusion and interaction between children plus its developmental and educational value. The importance of play and of children's rights to play in their local communities is essential.

### 7.6 Summary

#### Provision for children and young people summary

- ◀ There are 53 play provision sites in Hertsmere; a total of over five hectares.
- ◀ Fields In Trust (FIT) suggests 0.25 hectares per 1,000 population as a guideline quantity standard for equipped/designated play areas and 0.30 hectares per 1,000 population for other outdoor provision (MUGA/Skate parks). Overall, Hertsmere has a current provision level of 0.06 hectares per 1,000 population which is significantly below the suggested benchmarks.
- ◀ The mapping highlights that nearly all analysis areas across the Borough have access to at least one form of play area but there are gaps in provision in the Bushey Analysis Area and Potters Bar Analysis Area.
- ◀ Quality of provision is generally good across Hertsmere with 65% of sites assessed as above the threshold.
- ◀ Notably there is a significant spread (48%) between the highest and lowest scoring sites, with Elstree Hill North play Area (36%) compared to Fishers Park play area (84%).
- ◀ All play provision rates above the threshold for value; reflecting the social, healthy and developmental benefits provision can provide.

### PART 8: ALLOTMENTS

#### 8.1 Introduction

Allotments are a typology which covers open spaces that provide opportunities for those people who wish to do so to grow their own produce as part of the long-term promotion of sustainability, health and social interaction. This includes provision such as allotments, community gardens and city farms.

#### 8.2 Current provision

There are 13 sites classified as allotments in Hertsmere, equating to over 18 hectares. One site was not assessed for quality and value due to late inclusion.

No site size threshold has been applied to allotments and as such all known provision is identified and included within the audit.

*Table 8.1: Distribution of allotments*

Analysis area	Allotments		
	Number of sites	Size (ha)	Current provision (Ha per 1,000 population)
Aldenham & Shenley	4	4.35	0.28
Borehamwood & Elstree	3	3.65	0.09
Bushey	3	5.82	0.22
Potters Bar	3	4.84	0.21
<b>Hertsmere</b>	<b>13</b>	<b>18.66</b>	<b>0.18</b>

The National Society of Allotment and Leisure Gardeners (NSALG) suggests a national standard of 20 allotments per 1,000 households (20 per 2,000 people based on two people per house or one per 100 people). This equates to 0.25 hectares per 1,000 populations based on an average plot-size of 250 square metres (0.025 hectares per plot).

Based on Hertsmere's current population (104,031) it does not meet the NSALG standard. Using this suggested standard, the minimum amount of allotment provision for Hertsmere is 26 hectares. Existing provision of almost 19 hectares therefore does not meet this guideline.

#### 8.3 Accessibility

Figure 8.1 overleaf shows the location of allotment sites across Hertsmere. No accessibility standard is applied to allotment provision.

The supply and location of allotment provision provided within an area is best determined by demand for example, number of plots in use and waiting lists. Such information can be seen in table 8.2 overleaf.



# HERTSMERE BOROUGH COUNCIL OPEN SPACE ASSESSMENT

Figure 8.1: Location of allotment provision in Hertsmere

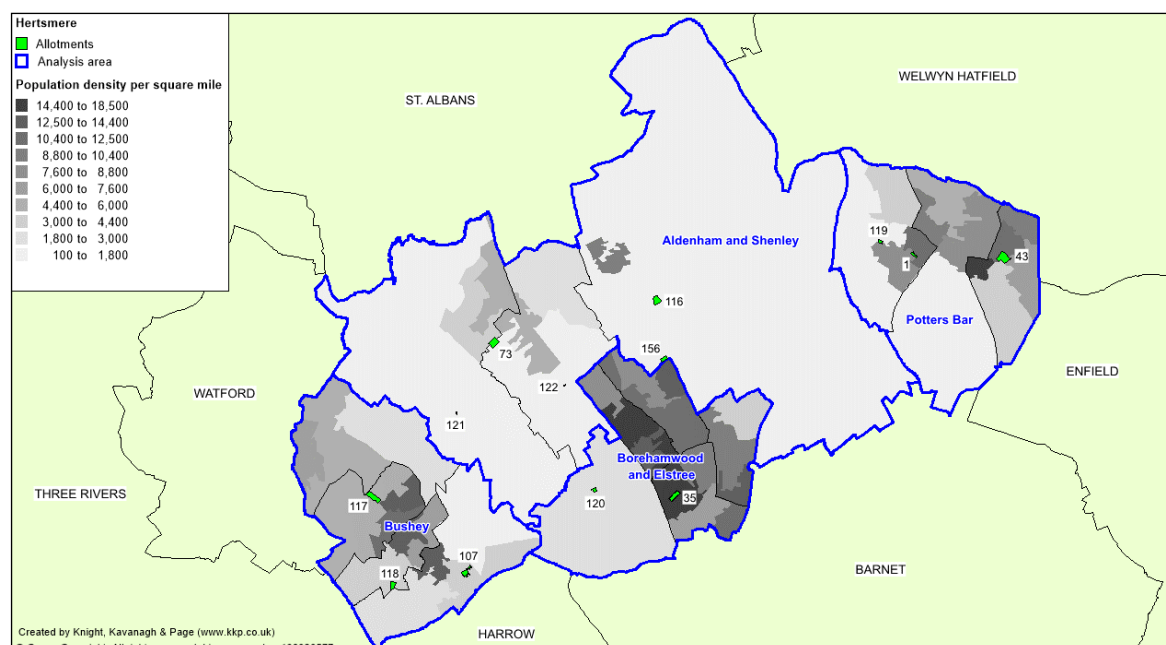


Table 8.2: Allotment information (where known)

Site ID	Site	Analysis area	Information	Quality score	Value score
73	Phillimore recreation ground allotments	Aldenham & Shenley	76 full plots. No waiting list.	66.9%	33.3%
116	Green Street, Shenley	Aldenham & Shenley	Parish council manage 96 plots in use	48.4%	28.6%
121	Letchmore Heath	Aldenham & Shenley	Privately managed site. Plot numbers unknown.	37.9%	26.7%
122	Cobden Hill	Aldenham & Shenley	Unknown.	20.2%	21.9%
35	Furzehill Road allotments	Borehamwood & Elstree	Managed by Elstree and Borehamwood town council. 90 plots, all in use.	59.7%	27.6%
120	Allum Lane, Elstree	Borehamwood & Elstree	Managed by Elstree and Borehamwood town council. 43 plots, all in use. Increase in plots at site.	31.5%	21.9%
156	Stapleton Road Allotments*	Borehamwood & Elstree	Managed by Elstree and Borehamwood		
107	Windmill allotment gardens	Bushey	41 plots, all in use.	51.6%	27.6%
117	Finch Lane Allotments, Bushey	Bushey	Managed by Council. 84 plots, all in use. Increase in plots at site	49.2%	27.6%

\* Late inclusion therefore does not receive a quality or value score but is likely to score above threshold as it opened in 2017.

# HERTSMERE BOROUGH COUNCIL OPEN SPACE ASSESSMENT

Site ID	Site	Analysis area	Information	Quality score	Value score
118	Merryhill, Bushey	Bushey	Managed by Council. 50 plots, all in use.	48.4%	22.9%
1	Aberdale Gardens allotments	Potters Bar	12.5 plots, all in use.	28.2%	26.7%
43	High View Gardens allotments	Potters Bar	Owned by Council but managed by jointly with Potters Bar Allotment Association. 105 plots, all in use.	38.7%	27.6%
119	Kimptons Mead, Potters Bar	Potters Bar	Managed by Council. 17 plots, all in use.	38.7%	26.7%

Where known plot numbers equate to 611.5. All are believed to be in use. No waiting lists have been reported. However, based on plot information from the Council, a number of sites (Allum Lane and Finch Lane) have increased in plot numbers. This suggests that plots may have been halved to accommodate demand.

Given that plot numbers at all other sites (where information is known) have remained the same. It could be assumed that demand has remained steady and that supply of allotments in these areas has been enough.

## 8.4 Quality

To determine whether sites are high or low quality (as recommended by the Companion Guidance) the site assessment scores have been colour-coded against a baseline threshold (high being green and low being red). The table below summarises the results of the quality assessment for allotments in Hertsmere. A threshold of 45% is applied in order to identify high and low quality. Further explanation of how the quality scores and thresholds are derived can be found in Part 2 (Methodology).

Table 8.4: Quality ratings for allotments in Hertsmere

Analysis area	Scores (%)			Spread	No. of sites	
	Lowest score	Average score	Highest score		<40%	>40%
Aldenham & Shenley	20%	43%	67%	47%	2	2
Borehamwood & Elstree	31%	46%	60%	28%	1	1
Bushey	48%	50%	52%	3%	0	3
Potters Bar	28%	35%	39%	11%	3	0
<b>Hertsmere</b>	<b>20%</b>	<b>43%</b>	<b>67%</b>	<b>47%</b>	<b>6</b>	<b>6</b>

Half of sites rate below the quality threshold, suggesting a mixed standard of allotment provision in Hertsmere.

# HERTSMERE BOROUGH COUNCIL

## OPEN SPACE ASSESSMENT

The three sites scoring above the quality threshold are:

- ✦ Phillimore recreation ground allotments (67%)
- ✦ Furzehill Road allotments (60%)
- ✦ Windmill allotment gardens (52%)

The sites score highly for general levels of maintenance and cleanliness, surrounding fencing as well as a sense of personal security on site and informative signage. Phillimore recreation ground allotments also have onsite parking and well cared for greenhouses.

The three sites which score below the quality threshold can be attributed to fewer features and poor pathways which are not maintained to as higher standard. Entrance and gradient score slightly lower too. Better maintenance of these sites would improve site quality.

### 8.5 Value

In order to determine whether sites are high or low value (as recommended by the Companion Guidance) site assessments scores have been colour-coded against a baseline threshold (high being green and low being red). The table below summarises the results. A threshold of 20% is applied to identify high and low value. Further explanation of how the value scores and thresholds are derived can be found in Part 2 (Methodology).

*Table 8.5: Value ratings for allotments in Hertsmere*

Analysis area	Scores (%)			Spread	No. of sites	
	Lowest score	Average score	Highest score		<20%	>20%
Aldenham & Shenley	22%	28%	33%	11%	0	4
Borehamwood & Elstree	22%	25%	28%	6%	0	2
Bushey	23%	26%	28%	5%	0	3
Potters Bar	27%	27%	28%	1%	0	3
<b>Hertsmere</b>	<b>22%</b>	<b>27%</b>	<b>33%</b>	<b>11%</b>	<b>0</b>	<b>12</b>

All allotments rate above the threshold for value. This reflects the associated social inclusion and health benefits, amenity value and the sense of place offered by such forms of provision. The highest scoring site, Phillimore recreation ground allotments, is observed as a large which is well used and maintained and connects to an amenity greenspace and natural/semi-natural area.

Allotments should generally be considered as highly valued as they are often identified by the local community as important forms of open space provision.

### 8.6 Summary

#### Allotments summary

- ◀ There are 13 sites classified as allotments in Hertsmer, equating to nearly 19 hectares. Stapleton Road Allotments has not been assessed due to late inclusion.
- ◀ Based on Hertsmer's current population (104,031) it does not meet the NSALG standard. Using this suggested standard, the minimum amount of allotment provision for Hertsmer is 26 hectares. Existing provision of 18.66 hectares therefore does not meet this guideline.
- ◀ Where known plot numbers equate to 611.5, all of which are believed to be in use.
- ◀ Six sites rate below the quality threshold and are identified as having in general poorer maintenance levels and fewer features.
- ◀ All allotments rate above the threshold for value. This reflects the associated social inclusion and health benefits, amenity value and the sense of place offered by such forms of provision.

# HERTSMERE BOROUGH COUNCIL

## OPEN SPACE ASSESSMENT

---

### PART 9: CEMETERIES

#### 9.1 Introduction

Cemeteries and churchyards include areas for quiet contemplation and burial of the dead. Sites can often be linked to the promotion of wildlife conservation and biodiversity.

#### 9.2 Current provision

There are 11 sites classified as cemeteries/churchyards, equating to over 27 hectares of provision. No site size threshold has been applied and as such all identified provision is included within the audit.

*Table 9.1: Distribution of cemeteries and churchyards*

Analysis area	Cemeteries/churchyards	
	Number of sites	Size (ha)
Aldenham & Shenley	5	3.93
Borehamwood & Elstree	3	3.87
Bushey	2	18.07
Potters Bar	1	1.43
<b>Hertsmere</b>	<b>11</b>	<b>27.30</b>

The largest contributor to burial provision in the area is Bushey Jewish Cemetery (16.2 hectares). Hertsmere BC highlight that Allum Lane is to be extended as it is running out of capacity.

#### 9.3 Accessibility

No accessibility standard is set for this typology and there is no realistic requirement to set such standards. Provision should be based on burial demand. Figure 9.1 shows cemeteries and churchyards mapped against analysis areas.

# HERTSMERE BOROUGH COUNCIL OPEN SPACE ASSESSMENT

Figure 9.1: Cemetery sites mapped against analysis area

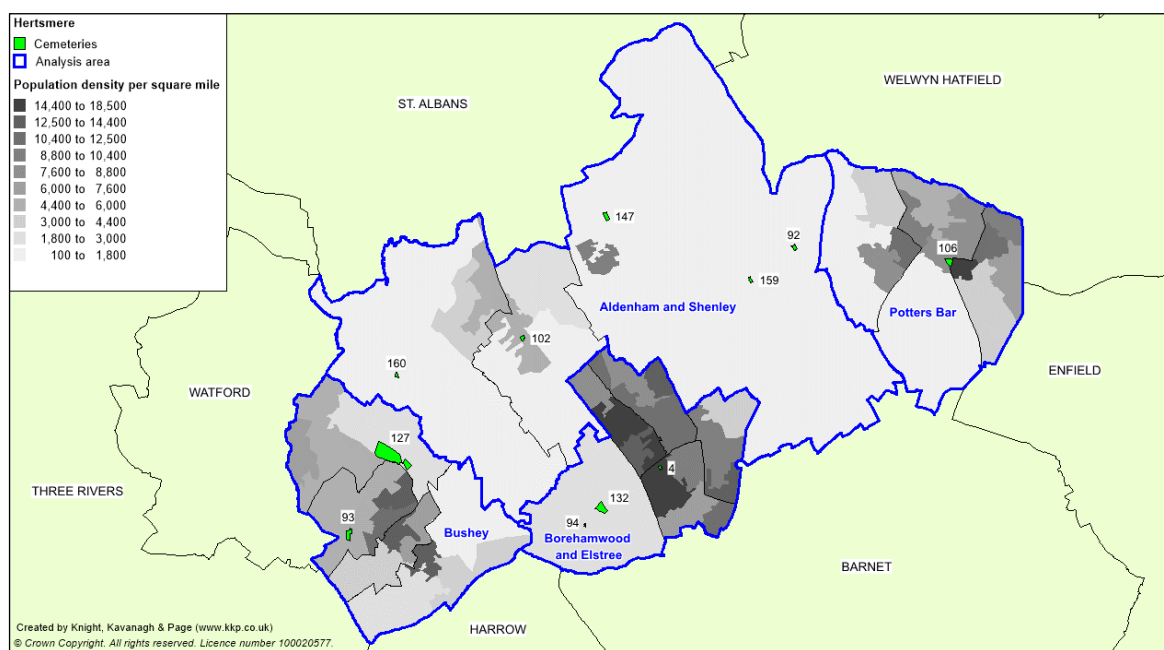


Table 9.2: Key to sites mapped

Site ID	Site name	Analysis area	Quality score	Value score
92	St Giles' Church	Aldenham & Shenley	55.7%	27.0%
102	Watling Street	Aldenham & Shenley	43.0%	28.0%
147	Shenleybury Cemetery	Aldenham & Shenley	47.2%	39.0%
159	St Margaret's, Ridge	Aldenham & Shenley	56.6%	39.0%
160	St John the Baptist, Aldenham	Aldenham & Shenley	59.3%	39.0%
4	All Saints Graveyard	Borehamwood & Elstree	43.2%	33.0%
94	St Nicholas' Church	Borehamwood & Elstree	25.5%	28.0%
132	Allum Lane Cemetery	Borehamwood & Elstree	49.7%	34.0%
93	St James' Church	Bushey	47.2%	32.0%
127	Bushey Jewish Cemetery	Bushey	51.6%	35.0%
106	Willow Way/Mutton Lane	Potters Bar	29.4%	27.0%

# HERTSMERE BOROUGH COUNCIL

## OPEN SPACE ASSESSMENT

### 9.4 Quality

To determine whether sites are high or low quality (as recommended by the Companion Guidance), site assessments scores are colour-coded against a baseline threshold (high being green and low being red). The table below summarises the results of the quality assessment for cemeteries. A threshold of 45% is applied in order to identify high and low quality. Further explanation of how the quality scores and threshold are derived can be found in Part 2 (Methodology).

Table 9.4: Quality ratings for cemeteries

Analysis area	Scores (%)			Spread	No. of sites	
	Lowest score	Average score	Highest score		Low <45%	High >45%
Aldenham & Shenley	43%	52%	59%	16%	1	4
Borehamwood & Elstree	25%	39%	50%	24%	2	1
Bushey	47%	49%	52%	4%	0	2
Potters Bar	29%	29%	29%	0%	1	0
<b>Hertsmere</b>	<b>25%</b>	<b>46%</b>	<b>59%</b>	<b>34%</b>	<b>4</b>	<b>7</b>

Nearly two thirds (64%) of cemeteries and churchyards in Hertsmere rate below the threshold set for quality; suggesting a low standard of quality.

There are seven sites scoring above the threshold for quality:

- ✦ St John the Baptist, Aldenham (59%)
- ✦ St Margaret's, Ridge (57%)
- ✦ St Giles' Church (56%)
- ✦ Bushey Jewish Cemetery (52%)
- ✦ Allum Lane Cemetery (50%)
- ✦ St James' Church (47%)
- ✦ Sheleybury Cemetery (47%)

Each are observed as being very well maintained, with well-kept graves, benches, good signage and good paths.

There are four sites to rate below the quality threshold. The three lowest scoring sites are:

- ✦ Christ Church, Watling Street (43%)
- ✦ All Saints Graveyard (43%)
- ✦ Willow Way/Mutton Lane (29%)
- ✦ St Nicholas' Church (26%)

St Nicholas Church (26%) scores the lowest due to no specific paths or signage and poor overall maintenance. The site is also noted as being very overgrown and requiring a lot of work. It also lacks ancillary features such as seating and bins. Willow Way/Mutton Lane has litter bins; however it appears poorly maintained with litter an issue.

Despite All Saints Graveyard (43%) scoring just below the threshold, it scores well for overall maintenance, personal security and entrances. It also has the additional benefit of seating and bins.

# HERTSMERE BOROUGH COUNCIL

## OPEN SPACE ASSESSMENT

### 9.5 Value

To determine whether sites are high or low value (as recommended by the Companion Guidance), site assessment scores are colour-coded against a baseline threshold (high being green and low being red). The table below summarises the results of the value assessment for cemeteries. A threshold of 20% is applied in order to identify high and low value. Further explanation of how the value scores and threshold are derived can be found in Part 2 (Methodology).

Table 9.5: Value ratings for cemeteries

Analysis area	Scores (%)			Spread	No. of sites	
	Lowest score	Average score	Highest score		Low <20%	High >20%
Aldenham & Shenley	27%	34%	39%	12%	0	5
Borehamwood & Elstree	28%	32%	34%	6%	0	3
Bushey	32%	34%	35%	3%	0	2
Potters Bar	27%	27%	27%	0%	0	1
<b>Hertsmere</b>	<b>27%</b>	<b>33%</b>	<b>39%</b>	<b>12%</b>	<b>0</b>	<b>11</b>

All identified cemeteries and churchyards are assessed as being of high value, reflecting their role within local communities. In addition, the cultural/heritage value of sites and the sense of place they provide for local people is acknowledged in the assessment scoring. High scoring sites for value offer visually attractive landscape benefits and opportunities to serve an important function for a local community. As well as providing burial space, cemeteries and churchyards can often offer important low impact recreational benefits to the local area (e.g. habitat provision, wildlife watching).

The five highest scoring sites for value are Shenleybury Cemetery (39%), St Margaret's (39%), St John the Baptist (39%), Bushey Jewish Cemetery (35%) and Allum Lane Cemetery (34%) which meet the needs of more users by having good pathways and ancillary facilities such as seating.

### 9.6 Summary

#### Cemeteries summary

- ◆ There are 11 cemeteries and churchyards, equating to over 27 hectares.
- ◆ The largest site is Bushey Jewish Cemetery (16.2 hectares)
- ◆ No standards are set for cemeteries. The need for additional cemetery provision should be driven by the requirement for burial demand and capacity.



