

**APPEAL IN RESPECT OF
HILFIELD SOLAR FARM:
LAND NORTH OF
BUTTERFLY LANE, LAND
SURROUNDING
HILFIELD FARM AND
LAND WEST OF HILFIELD
LANE, ALDENHAM**

**ON BEHALF OF THE COMBINED
OBJECTORS GROUP – Rule 6 Party**

**LANDSCAPE AND VISUAL
PROOF OF EVIDENCE**

**Prepared by:
Graeme Drummond BSc(Hons) DipLA,
CMLI, FArborA**

Volume 2: Appendices

**Planning Inspectorate Appeal:
PINS Ref: APP/N1920/W/22/3295268
LPA Ref: 21/0050/FULEI**

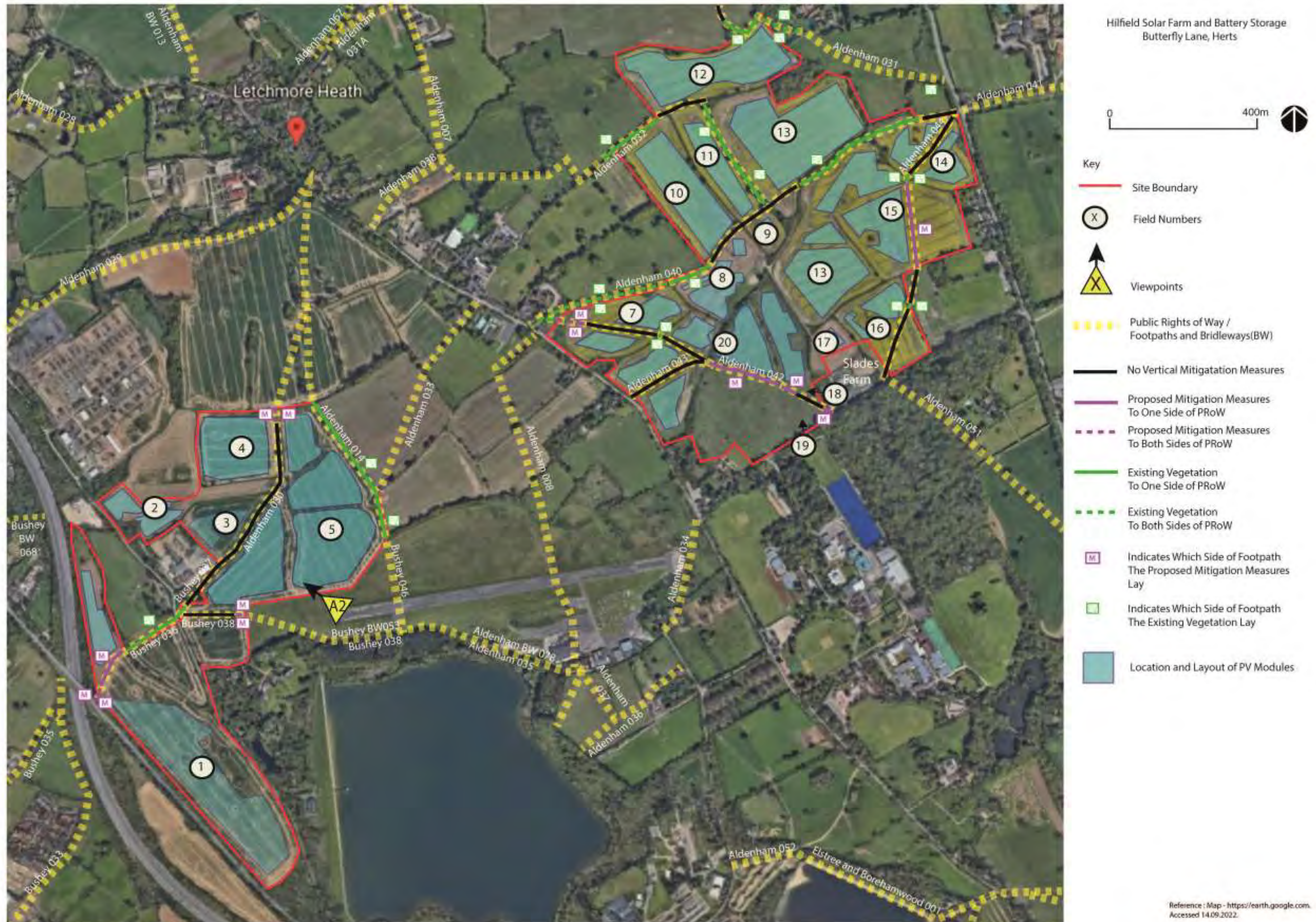
Date: September 2022

Contents

- Appendix A: Public Rights of Way, Mitigation Measures and Position of Viewpoint A4 - East and West Sites
Public Rights of Way, Mitigation Measures and Position of Viewpoint A2 - Eastern Site
Position of Appellants Viewpoints
- Appendix B: Photographic Representation of Viewpoints from:
Plan 1: From Footpath - Aldenham 017 at Batlers Green (Viewpoint A1)
Plan 2: From Footpath - Bushey 038 at Western End of Runway London Elstree Aerodrome (Viewpoint 2)
- Appendix C: Appellant Viewpoint 9 - Footpath Junction of Aldenham 040/44 Photomontage
- Appendix D: Cross Section Indicating Fence Offsets to Footpaths
- Appendix E: Summary of Effects Table

Appendix A:

Public Rights of Way, Mitigation Measures and Position of Viewpoint A4 - East and West Sites



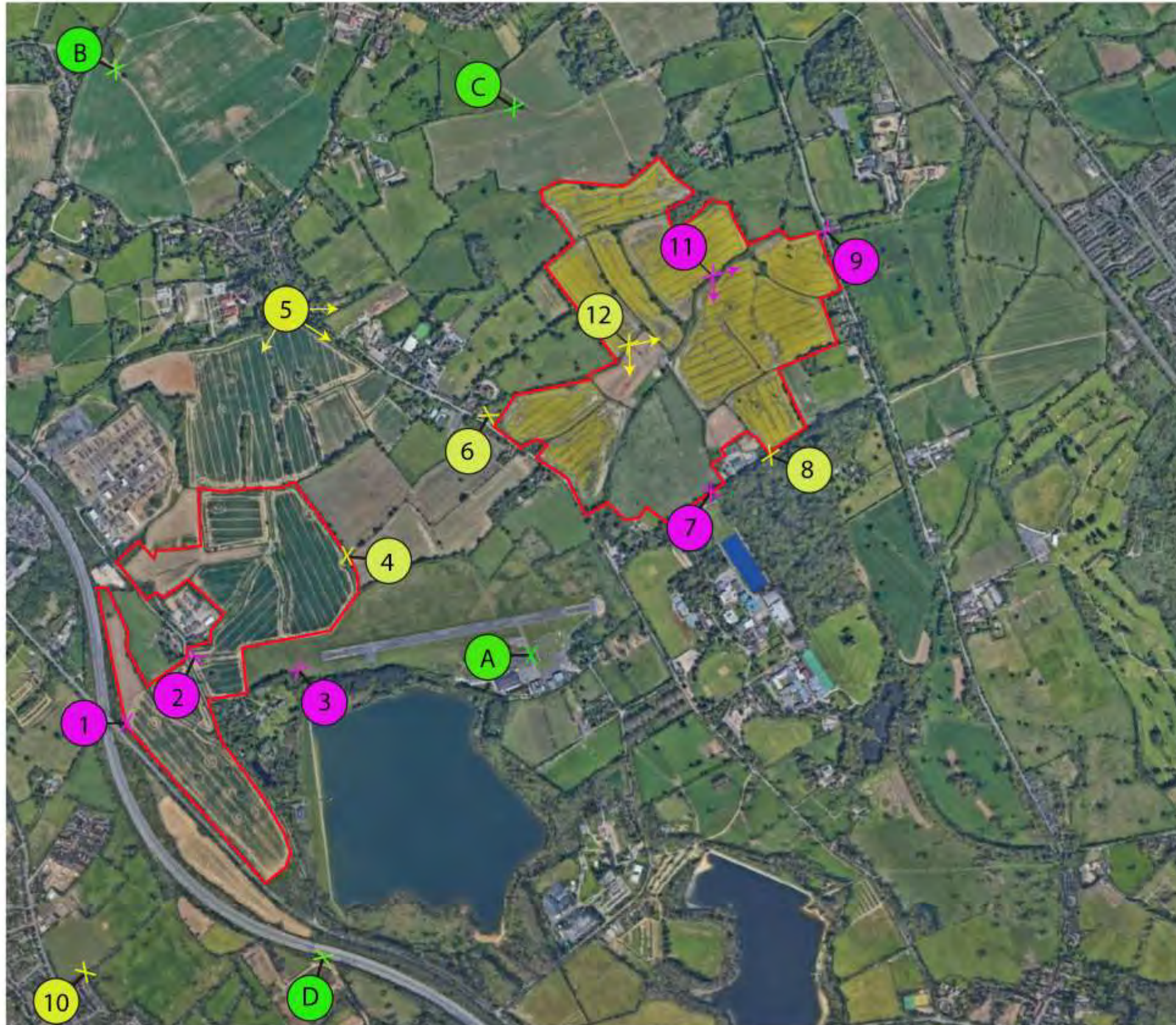
Appendix A:

Public Rights of Way, Mitigation Measures and Position of Viewpoint A2 - Eastern Site



Appendix A:

Position of Appellants Viewpoints







Hilfield Solar Farm and Battery Storage
Butterfly Lane, Herts
Appellant Viewpoints

0 600m



Key

-  Site
-  Representative Viewpoint
-  Representative Photomontage
-  Illustrative Viewpoint

Appendix B: Photographic Representation of Viewpoints

From Footpath - Aldenham 017 at Batlers Green (Viewpoint A1)



Appendix B: Photographic Representation of Viewpoints

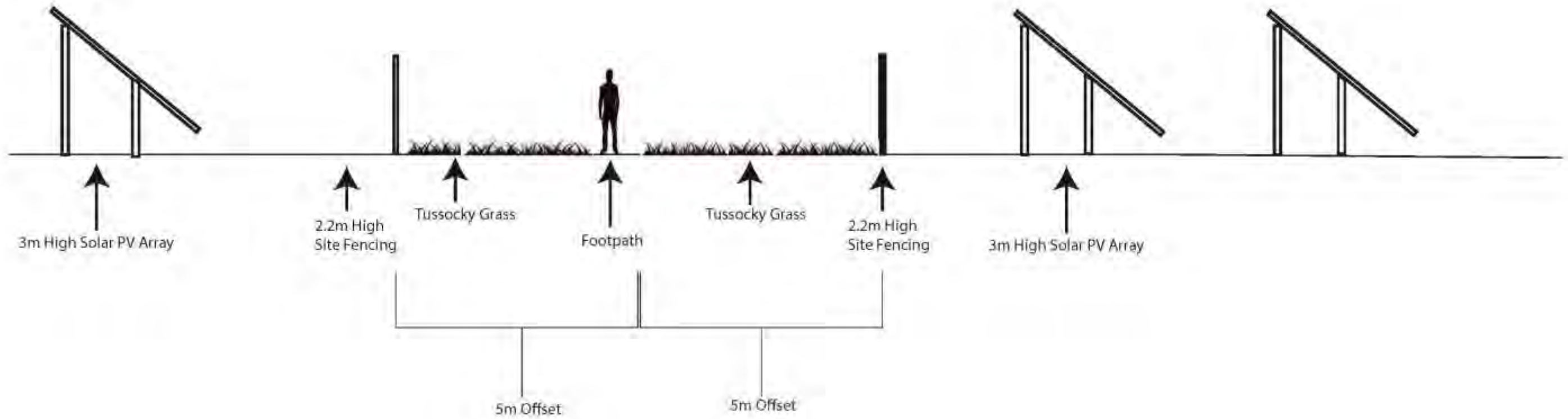
From Footpath - Bushey 038 at Western End of Runway, London Elstree Aerodrome (Viewpoint A2)



Appendix C: Appellants Viewpoint 9 - Junction of Aldenham 040/44



Appendix D: Cross Section Indicating Fence Offsets to Footpaths



Appendix E: Summary of Effects Table

LANDSCAPE CHARACTER EFFECTS							
Receptor	Value	Susceptibility	Sensitivity	Magnitude	Significance	Positive Neutral Adverse	Appellant's Assessment Long-term Semi-permanent
Borehamwood Plateau	Community	High	Medium	Large	Major-Moderate	Adverse	Moderate Adverse
Aldenham Plateau	Community	High	Medium	Large	Major-Moderate	Adverse	Negligible Adverse
VISUAL RECEPTOR EFFECTS							
Receptor	Value	Susceptibility	Sensitivity	Magnitude	Significance	Positive Neutral Adverse	Appellant's Assessment Long-term Semi-permanent
Viewpoint 1	Community	High	High-Medium	Large	Major	Adverse	Large/Medium Adverse
Viewpoint 2	Community	Medium	Medium	Medium	Moderate	Adverse	Medium Adverse
Viewpoint 3	Community	High	High-Medium	Large	Major	Adverse	Large/Medium Adverse
Viewpoint 4	Community	High	High-Medium	Large	Major	Adverse	Large Adverse
Viewpoint 5	Community	Low	Medium-Low	Small	Slight	Neutral	Negligible
Viewpoint 6	Community	Low	Medium-Low	Small	Slight	Adverse	Small Adverse
Viewpoint 7	Community	Medium	Medium	Medium	Moderate	Adverse	Medium Adverse
Viewpoint 8	Community	Medium	Medium	Medium	Moderate	Adverse	Large-Medium
Viewpoint 9	Community	High	High-Medium	Large	Major	Adverse	Large
Viewpoint 10	Community	Low	Medium-Low	Small	Slight	Neutral	Negligible
Viewpoint 11	Community	High	High-Medium	Large	Major	Adverse	Large
Viewpoint 12	Community	High	High-Medium	Large	Major	Adverse	Large
ADDITIONAL VISUAL RECEPTORS - EFFECTS							
Receptor	Value	Susceptibility	Sensitivity	Magnitude	Significance	Positive Neutral Adverse	
A1	Community	High	High-Medium	Large	Major	Adverse	
A2	Community	High	High-Medium	Large	Major	Adverse	