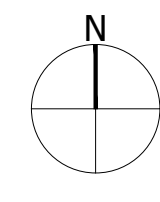


LEGEND

-  Appeal Site Boundary
 -  Existing Water Courses and Features ^
 -  Contours/Spot Heights (Metres AOD) ^
- National Character Area (NCA) Profiles #
 Study area lies entirely within area 111, Northern Thames Basin
- Hertfordshire County Landscape Character Areas
-  12 Oxhey Golflands
 -  14 Bushey Hill Pastures
 -  15 Bushey Swards
 -  16 Aldenham Plateau
 -  17 Ver Colne River Valley
 -  22 Borehamwood Plateau
 -  23 Elstree Ridge And Slopes
 -  Urban Areas



Sources:
 ^ OS Mapping
 ^ Hertfordshire Landscape Character Assessment
 Data collected for constraints and analysis mapping is based on publicly available sources at the time of preparation inserted using the British National Grid and may itself not be accurate. Barton Willmore, now Stantec shall not be liable for the accuracy of data derived from external sources.

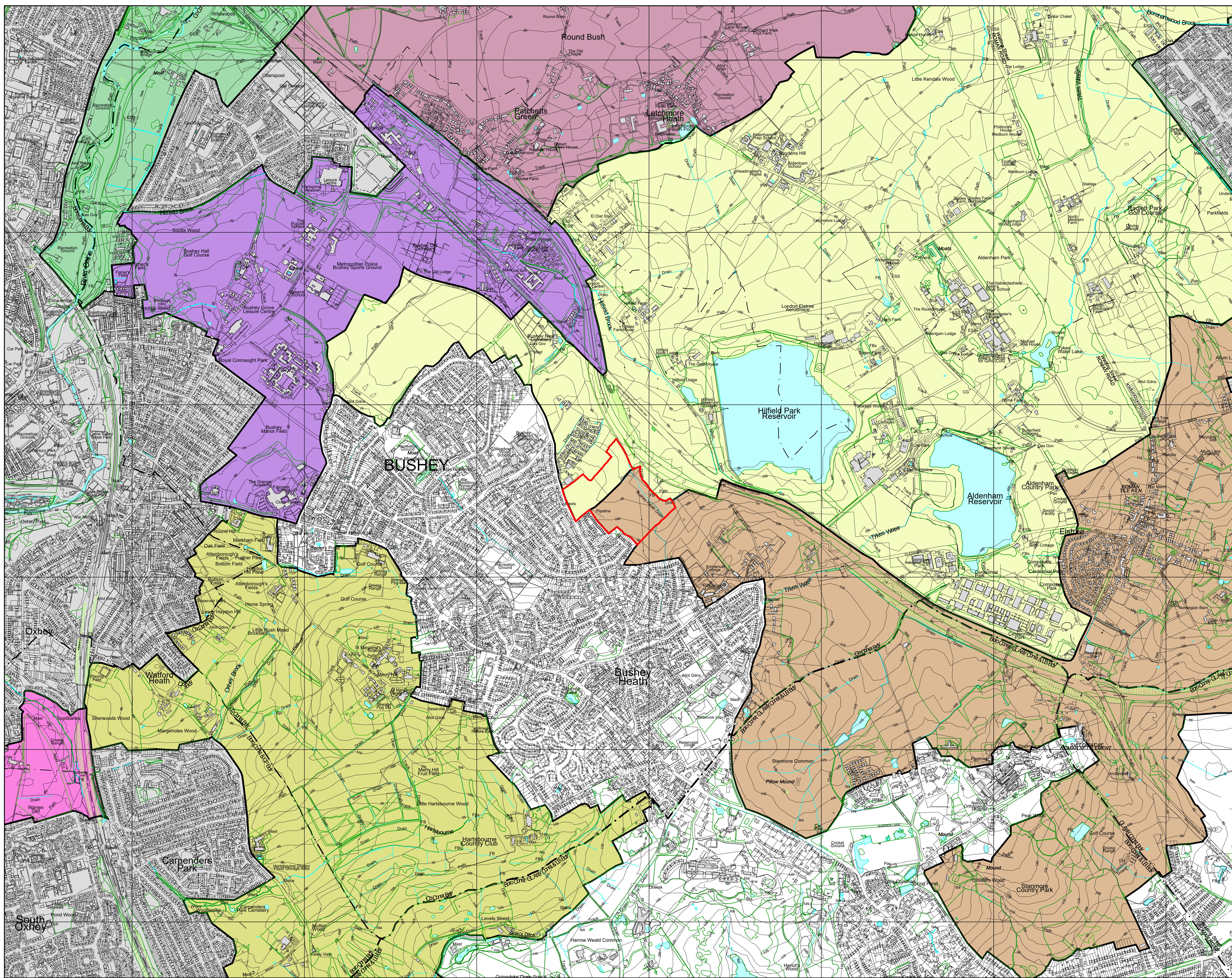


FIGURE PC-3

Project
Land at Little Bushey Lane, Bushey

Drawing Title
Landscape Character Plan - Published Character Assessments

| | | | |
|------------|------------------------------|----------|----------|
| Date | Scale | Drawn by | Check by |
| 20.03.2023 | 1:10,000 @A1 1:20,000 @A3 | ML | PC |
| Project No | Drawing No | Revision | |
| 34785 | LN-LP-03 | - | |



Town Planning • Master Planning & Urban Design • Architecture •
 Landscape Planning & Design • Infrastructure & Environmental Planning •
 Heritage • Graphic Communication •
 Communications & Engagement • Development Economics

bartonwillmore.co.uk 