

# Technical Note

---

Project:	<b>Elstree Way Corridor</b>	Job No:	<b>60278138</b>
Subject:	<b>Scheme Summary</b>		
Prepared by:	<b>Caroline Almond</b>	Date:	<b>07/02/2014</b>
Checked by:	<b>David Hunter</b>	Date:	<b>10/02/2014</b>
Approved by:	<b>Alan Rodgers</b>	Date:	<b>10/02/2014</b>

---

## 1.0 Background

AECOM has prepared scheme proposals on behalf of Hertsmere Borough Council and Hertfordshire County Council (HCC) to introduce improvements for all modes Elstree Way Corridor (EWC). In particular the scheme aimed to reduce severance and encourage a modal shift towards more sustainable modes. The scheme additionally sought to provide (or retain) adequate capacity for proposed residential redevelopments on the frontages of Elstree Way and future expected traffic growth in the area. This note sets out the key features and benefits of the proposal.

## 2.0 Proposed Scheme - Key Features

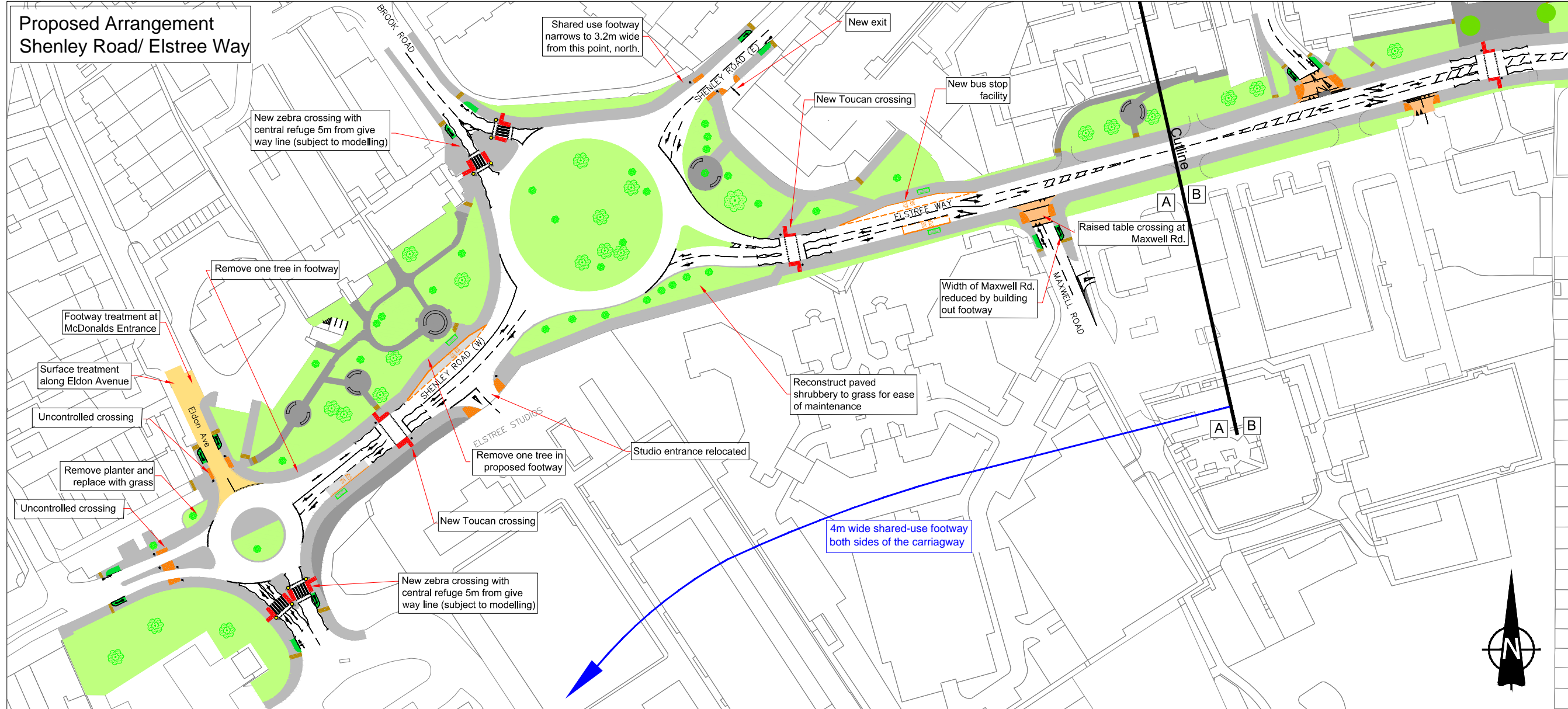
- 4m wide, shared use footways on both sides of Elstree Way to promote safe 2-way cycling on both sides of the corridor and provide and better connectivity for pedestrians and cyclists;
- Consistent off-carriageway provision for cyclists along the corridor including removing the needs for cyclists to join the carriageway at the roundabouts;
- Improved permeability through introduction of additional toucan crossings and relocation of existing crossing as detailed below:
  - Relocation of the existing pedestrian crossing at Maxwell Road west towards Shenley Road Roundabout to be on the desire line for the new Civic Centre main entrance.
  - Introduction of a new toucan crossing on the desire line outside The Venue.
  - Existing subway at Bullhead Road replaced with a controlled crossing (toucan)
- Improved uncontrolled crossings for pedestrians, closer to desire lines at the Shenley Road and Tesco Roundabouts, combined with alterations to approach geometries to slow traffic speeds;
- Improved bus stop arrangements with bus stop layout to be designed for full accessibility;
- Improved, more desirable environment for all users achieved through hard and soft landscaping;
- An enlarged and improved public space opposite Elstree Studios in the area surrounding the War Memorial;
- A reduction in the number of private accesses along the southern side Elstree Way and introduction of raised entry treatments over the accesses on the northern side to provide better continuity for pedestrians and cyclists;
- Carriageway/lane narrowing may lead to a reduction in average vehicle speeds; and
- Capacity designed to accommodate expected future growth on the local road network.

## 3.0 Next Steps

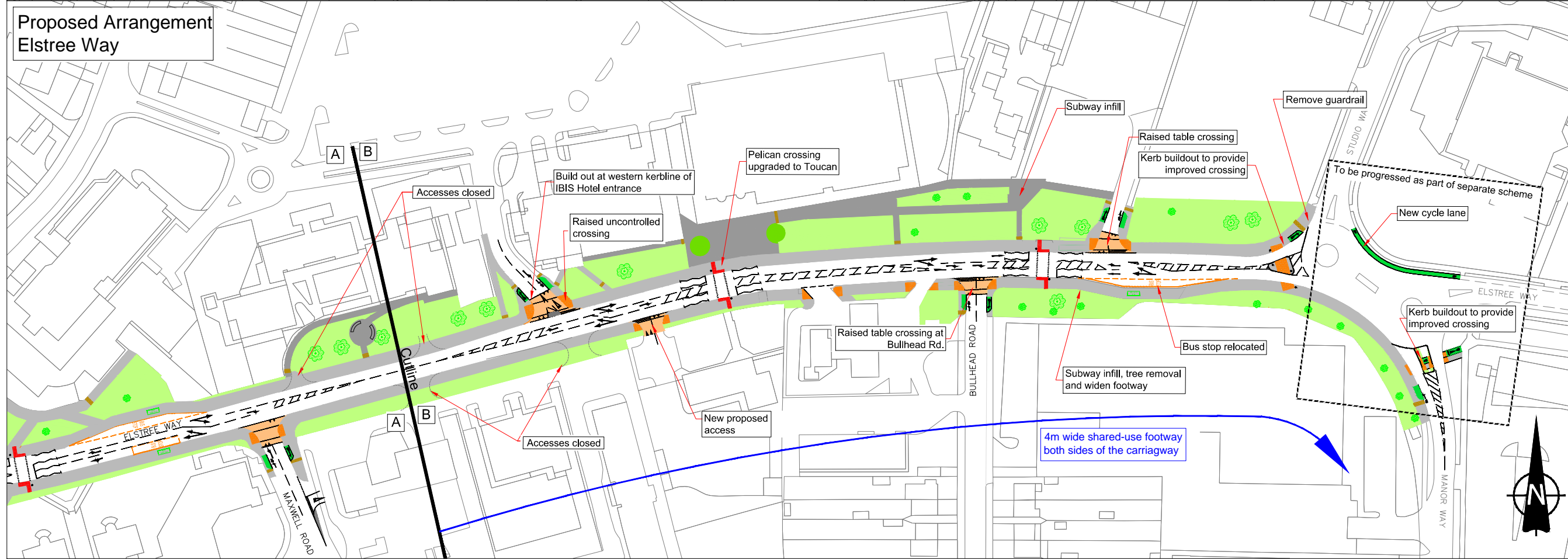
Traffic modelling is to be undertaken to allow any refinements to the scheme to be identified. Following this the scheme should be progressed to Preliminary/detailed design with road safety audits undertaken appropriate points.

ISO A1 594mm x 841mm  
 Checked: D-JH Approver: ADR  
 Designer: CA  
 Project Management Initials:  
 Last saved by: ALMONDC/2014-02-06  
 Filename: F:\PROJECTS\TRAFFIC - ELSTREE WAY CORRIDOR\50. CAD\WORKING\60278138 DRAFT C. ALMOND V3.DWG  
 Printed on 81% Post-Consumer Recycled Content Paper

### Proposed Arrangement Shenley Road/ Elstree Way



### Proposed Arrangement Elstree Way



**PROJECT**  
 Elstree Way Corridor  
 60278138

**CLIENT**  
 Hertsmere Borough Council  
 Civic offices,  
 Elstree way,  
 Borehamwood. WD6 1WA  
 Tel: 020 8207 2277  
 www.hertsmere.gov.uk

**CONSULTANT**  
 AECOM  
 63-77 Victoria Street  
 St Albans, Herts, AL1 3UT  
 Tel: +44 (0)1727 535000  
 Fax: +44 (0)1727 535099  
 www.aecom.com

**TOPOGRAPHICAL DATA**  
 Premier Surveys Ltd.

- NOTES**
- Grass/ Landscaping
  - Bus shelter
  - Tactile paving (buff colour)
  - Tactile paving (red colour)
  - Tactile paving (corduroy)
  - Surface treatment (paving)
  - Raised entry with uncontrolled crossings
  - Hard Landscaping
  - Footway area
  - Traffic Signal Pole
  - Belisha Beaccon
  - Bollard
  - Tree/ shrub
- NOTE:** All shared use footway areas are to be 4m wide unless specified.

1. This drawing is not intended for construction
2. Street lighting, drainage and any impact on statutory undertaker equipment to be considered at detailed design stage
3. All new lines and road markings are to be laid in accordance with "The Traffic Signs Regulations and General Directions 2002" (TSRGD)
4. All items shown in grey are existing and are to remain unless shown otherwise
5. All dimensions in metres, unless otherwise stated
6. Drawing based on topographical surveys by Premier Surveys on November 2012.
7. Traffic signal layouts design subject to traffic modelling to be completed
8. Materials to be in accordance with Roads in Hertfordshire guidance

**DRAFT**  
 NOT FOR CONSTRUCTION

ISSUE/REVISION		
I/R	DATE	DESCRIPTION
<b>DRAWING NUMBER</b>		
60278138/PRELIM/002-003		
<b>SHEET TITLE</b>		
New option (roundabouts to remain)		
<b>SHEET NUMBER</b>		<b>SCALE</b>
1 of 1		1:500 @ A3