



Hertsmere Borough Council

COMMUNITY INFRASTRUCTURE LEVY (CIL)

STATEMENT OF MODIFICATIONS REGULATION 19(1)(d)

September 2013

Document Title	Purpose
Statement of Modifications	Supporting document setting out the modifications which have been made to the Council's Draft Charging Schedule since it was published as for consultation between 26th July 2013 and the 6th September 2013.

Modifications to Draft Charging Schedule

This Statement of Modifications sets out the modifications which have been made to the Council's Draft Charging Schedule since it was published as for consultation between 26th July 2013 and the 6th September 2013.

In accordance with Regulation 11 and 19 of the CIL Regulations 2010 (as amended), this Statement of Modifications sets out the modifications, which Hertsmere Borough Council has made to its Draft Charging Schedule since it was published for consultations on the 26th July 2013 in accordance with the regulation 16.

Publication

As required under Regulation 19 of the Regulations, a copy of this Statement of Modifications has been sent to each of the persons that were invited to make representations under Regulation 15 and published on the Council website.

The Statement of Modifications will also be made available at the Civic Offices and deposit points as outlined in Appendix Three.

Requests to be heard

Any person may request to be heard by the Examiner in relation to the modifications as set out in this Statement of Modifications. Requests to be heard must include details of the modifications on which you wish to be heard (by reference to the statement of modifications) together with whether you support or oppose the modifications and the reason. The Council will submit a copy of each request it receives to the examiner.

Request to be heard by the Examiner must be made in writing by the 11th October 2013¹ to:

Ms Carmel Edwards
CIL Programme Officer
c/o Planning Policy
Hertsmere Borough Council
Civic Offices
Elstree Way
Borehamwood
Hertfordshire
WD6 1WA

Email: cil.hertsmere@gmail.com

Further information in relation to the Examination is available at www.hertsmere.gov.uk/cil

¹ 4 weeks from the date of submission – Section 11 Interpretation and application of Part 3 of the CIL Regulation 2010 (as amended)

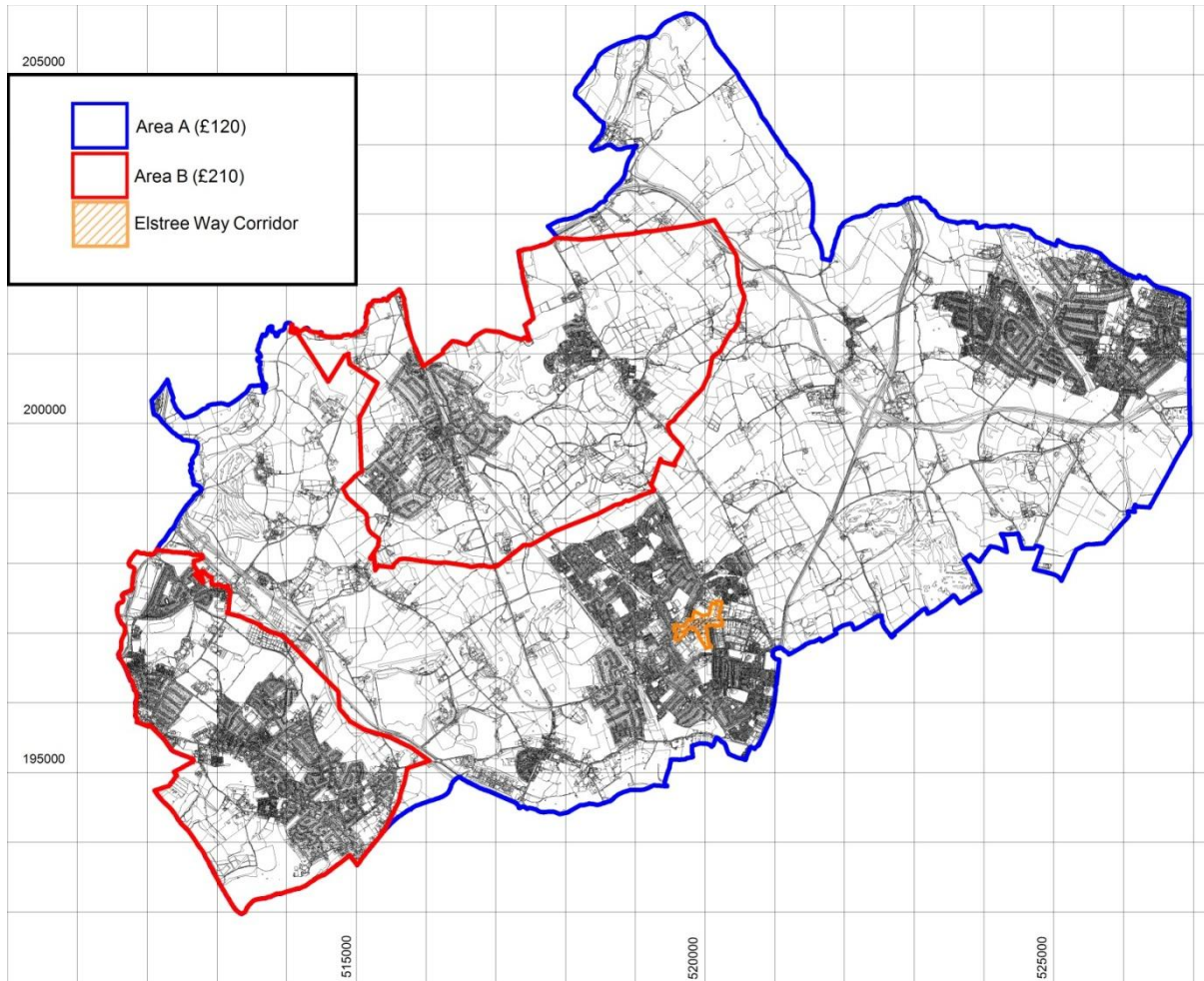
Appendix One Proposed Modifications

Changes are highlighted in **bold** with ~~strike-through~~ indicating deletions and **underline** indicating additions.

Modifications												
Document Reference	Modification	Reason for modification										
Annex 1	Addition of National Grid reference numbers to plan (see appendix two)	To ensure compliance with the Regulations and relevant Legislation.										
Draft Charging Schedule	Inclusion of uses classes <table border="1" data-bbox="450 687 1225 900"> <tbody> <tr> <td>Hotel (C1)</td> <td>£120</td> </tr> <tr> <td>Retirement Home Residential Institutions (C2)</td> <td>£120</td> </tr> <tr> <td>Retail (A1)</td> <td>£80</td> </tr> <tr> <td>Office (B1)</td> <td>£0</td> </tr> <tr> <td>Industrial (B2)</td> <td>£0</td> </tr> </tbody> </table>	Hotel (C1)	£120	Retirement Home Residential Institutions (C2)	£120	Retail (A1)	£80	Office (B1)	£0	Industrial (B2)	£0	Amendment for clarity.
Hotel (C1)	£120											
Retirement Home Residential Institutions (C2)	£120											
Retail (A1)	£80											
Office (B1)	£0											
Industrial (B2)	£0											
Infrastructure (R123) List	Inclusion of services on Draft Infrastructure (R123) List <u>Youth Services</u> <u>Childcare & Early Years Services</u>	In response to response to representation 8.										

Appendix Two

Revised Plan



Appendix Three

Deposit Points

Civic Offices, Elstree Way, Borehamwood, WD6 1WA
(Monday – Thursday: 8:30 – 17:15, Friday: 8:30 – 17:00)

Council Offices, Wyllyotts Centre, Wyllyotts, Place, Darkes Lane, Potters Bar, EN6 2HN
(9.30am and 2pm on Tuesdays, Wednesdays and Thursdays)

Council Offices, The Bushey Centre, High Street, Bushey, WD23 1TT
(9.30am and 2pm on Tuesdays, Wednesdays and Thursdays)

Aldenham Parish Council, Radlett Centre, 1 Aldenham Avenue, Radlett, WD7 8HL
(Monday - Friday: 09.00-16.00)

Borehamwood Library, Elstree Way, Borehamwood, WD6 1JX
(Monday & Wednesday: 09.00 - 19.00, Tuesday: 14.00 - 19.00, Thursday: 11.00 - 19.00, Saturday:
09.00 - 16.00, Friday and Sunday: Closed)

Bushey Library, Sparrows Herne, Bushey, WD23 1FA
(Monday & Wednesday: 14.00 - 18.00, Tuesday & Friday: 09.00 - 18.00, Thursday & Sunday: Closed,
Saturday: 09.00 - 16.00)

Oakmere Library, High Street, Potters Bar, EN6 5BZ
(Monday & Wednesday: 09.00 - 18.00, Tuesday & Friday: 14.00 - 18.00, Thursday & Sunday: Closed,
Saturday: 09.00 - 16.00)

Radlett Library, 1 Aldenham Avenue, Radlett, WD7 8HL
(Monday & Thursday: 14.00 - 18.00, Tuesday & Friday: 09.00 - 18.00, Saturday: 09.00 - 16.00,
Wednesday & Sunday: Closed)