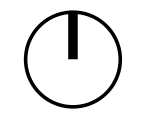
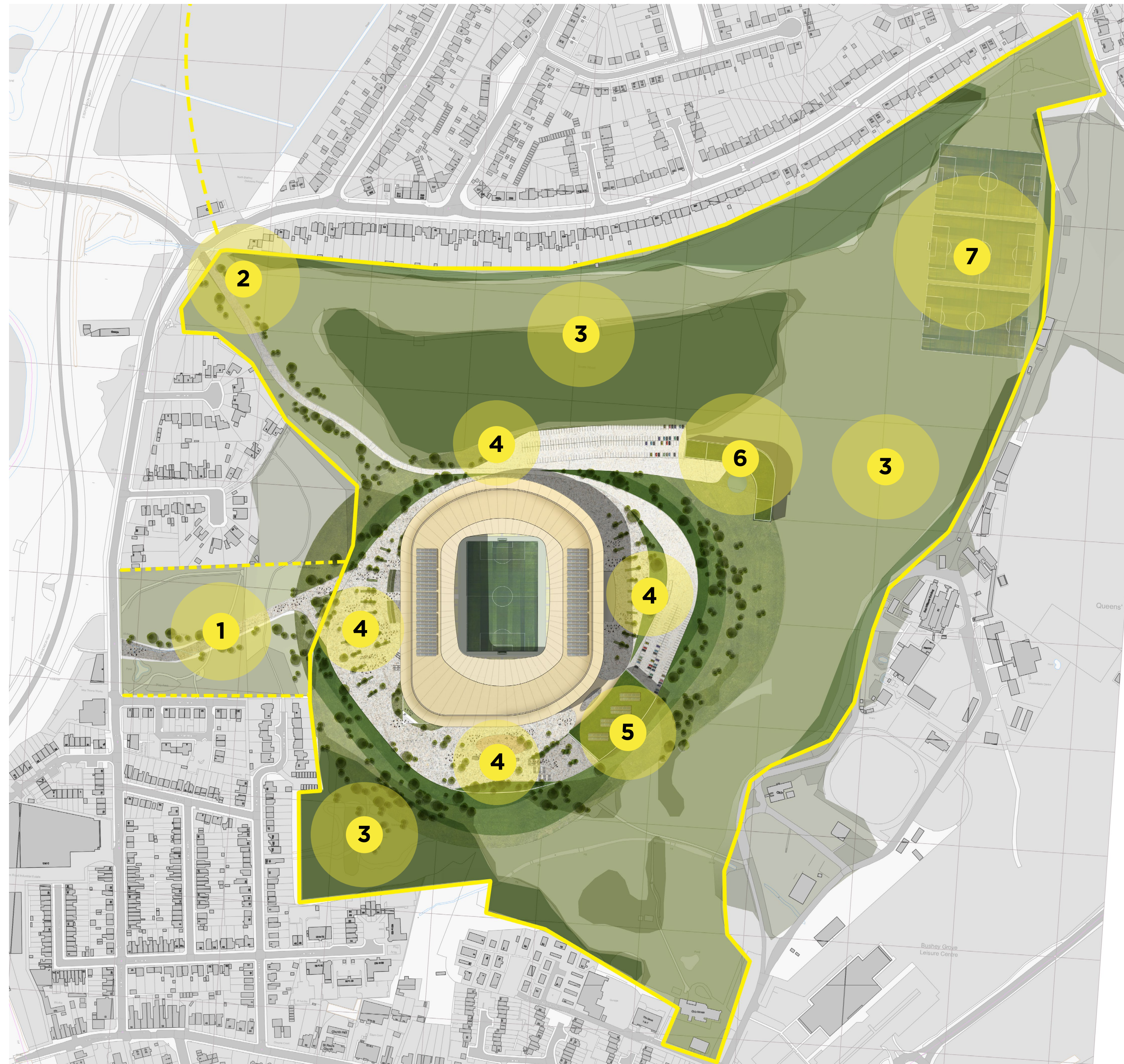


PROPOSED MASTERPLAN

- 1** Main pedestrian & cycle approach from
Watford Town Centre (Note: HBC land)
- 2** Main vehicular access
- 3** Parkland landscape & nature reserves
- 4** Fan and family activation zones
- 5** Indoor arena location
- 6** Hotel location
- 7** Potential community centre & pitches



Not to scale

Site area:
Approx 41.35ha