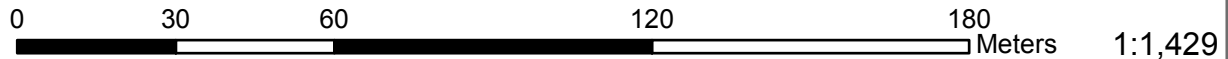
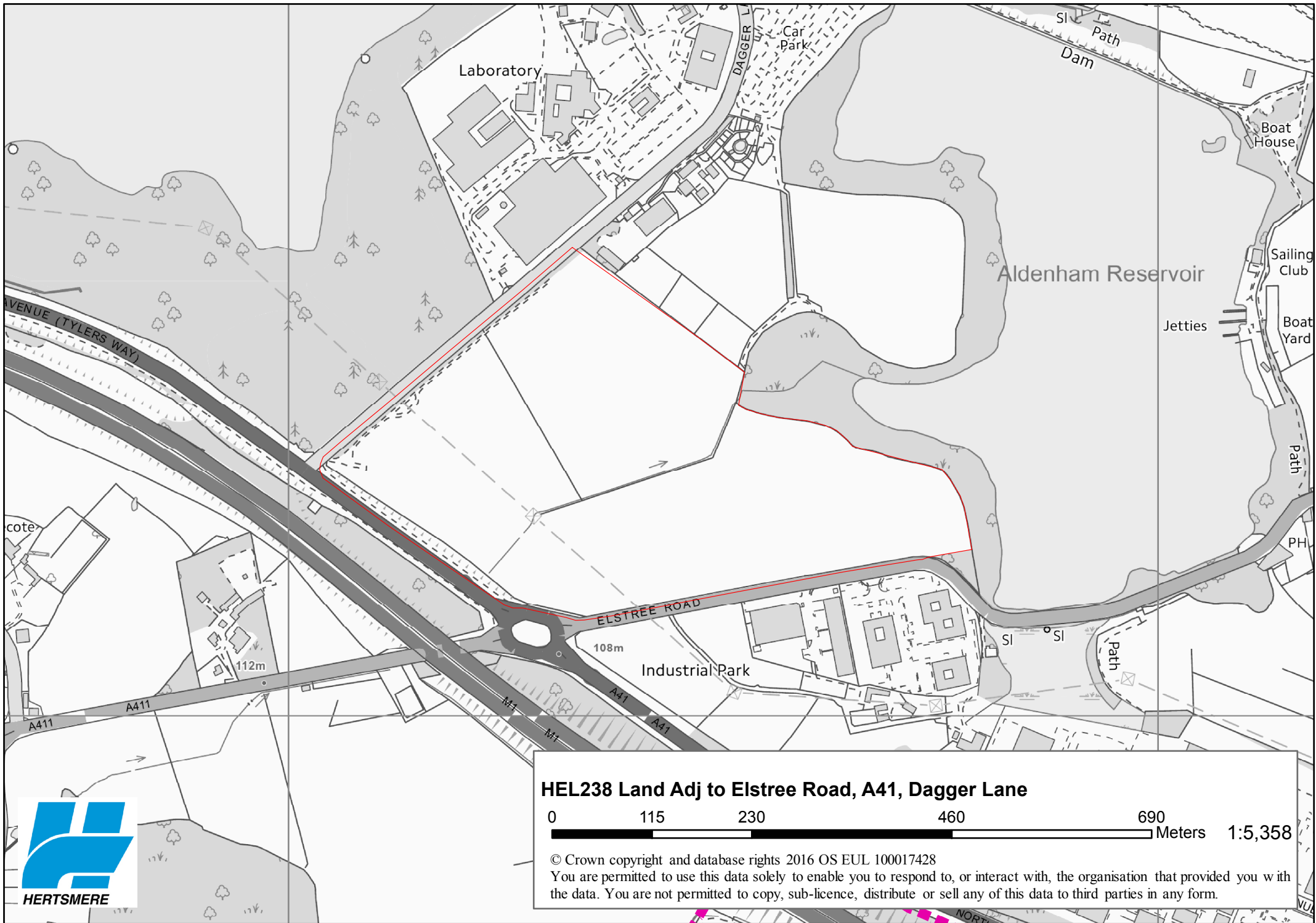


**HEL212 Land off Watford Road**



© Crown copyright and database rights 2016 OS EUL 100017428  
 You are permitted to use this data solely to enable you to respond to, or interact with, the organisation that provided you with the data. You are not permitted to copy, sub-licence, distribute or sell any of this data to third parties in any form.



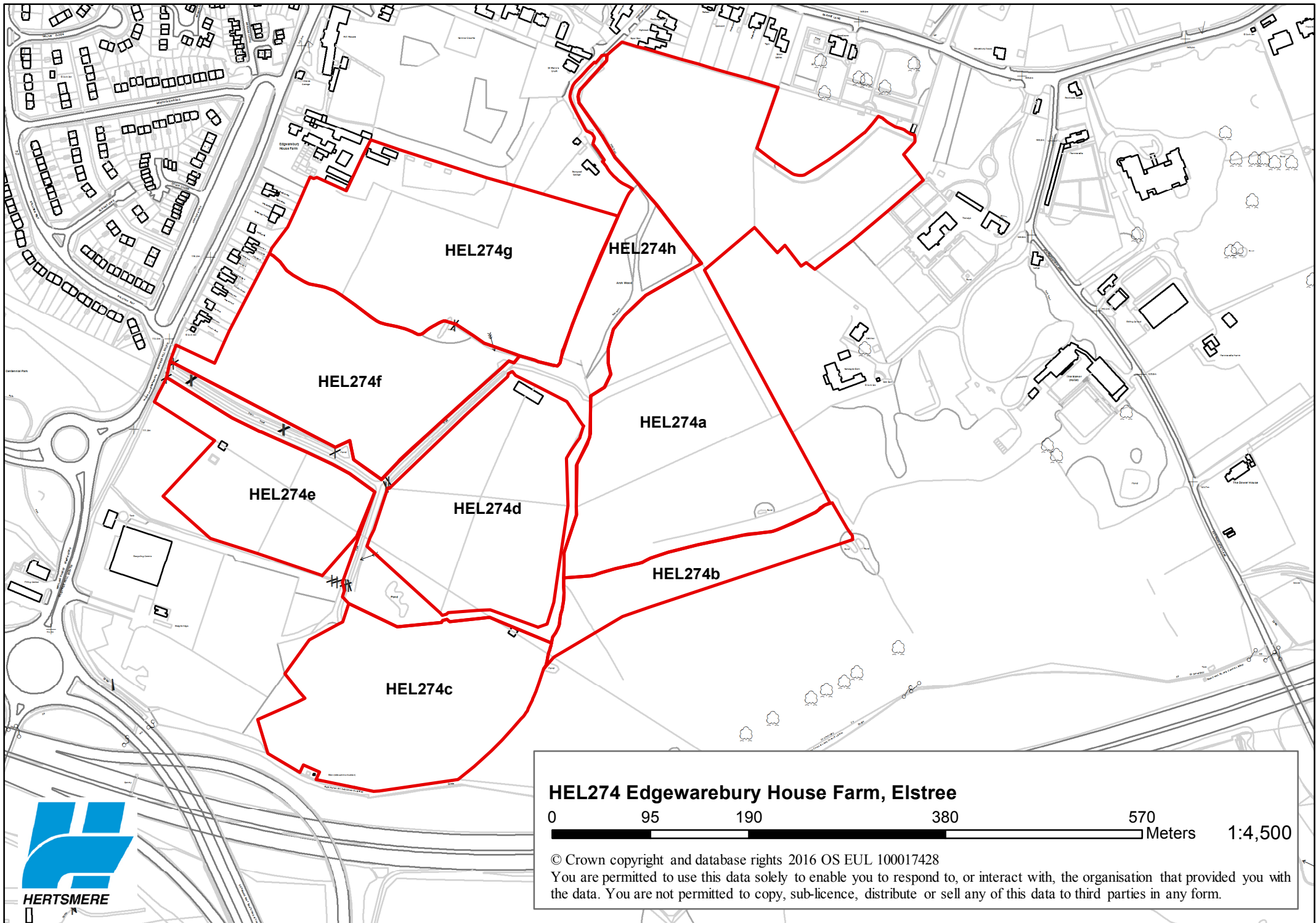


**HEL238 Land Adj to Elstree Road, A41, Dagger Lane**



© Crown copyright and database rights 2016 OS EUL 100017428  
You are permitted to use this data solely to enable you to respond to, or interact with, the organisation that provided you with the data. You are not permitted to copy, sub-licence, distribute or sell any of this data to third parties in any form.





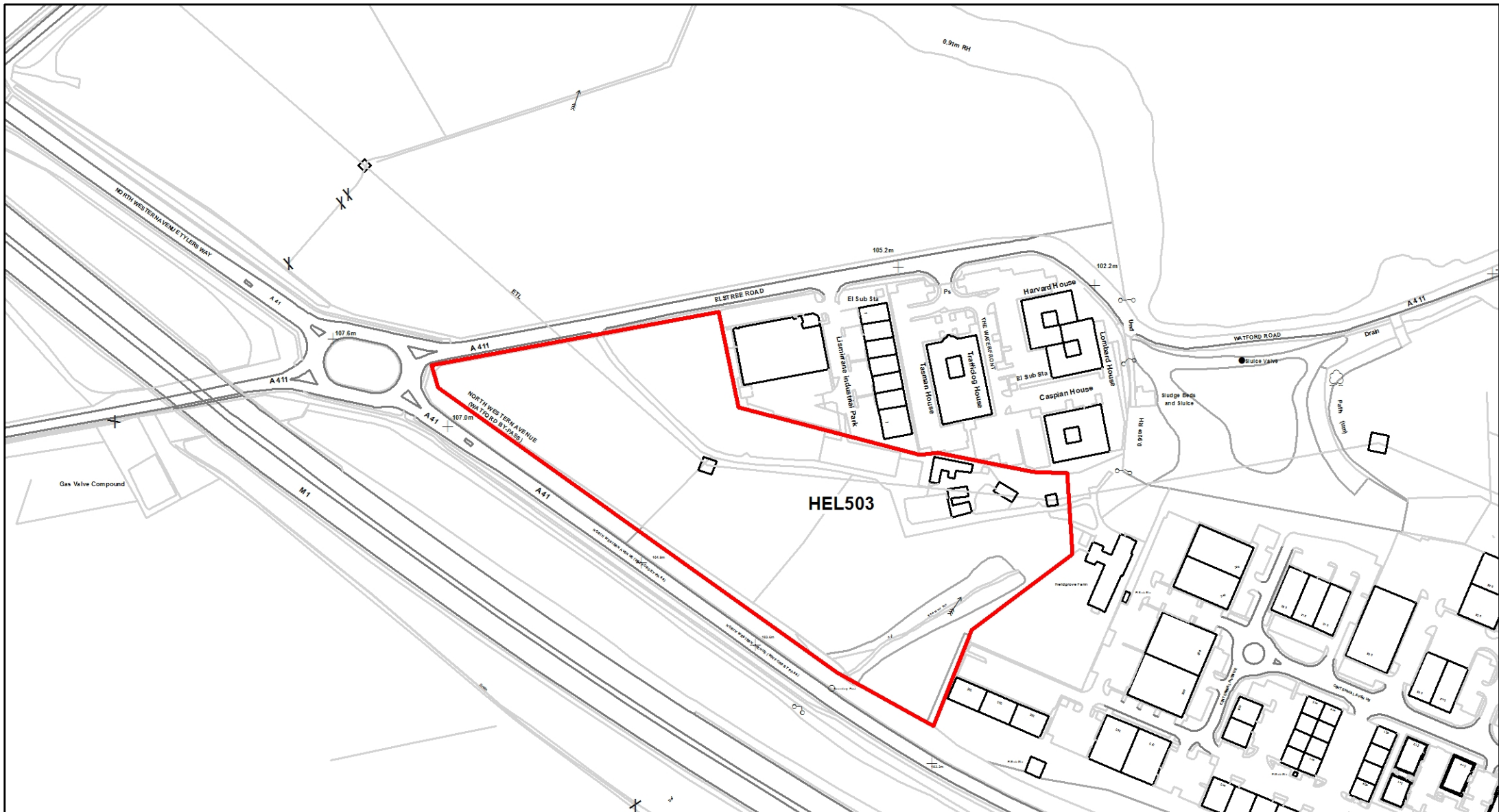
**HEL274 Edgwarebury House Farm, Elstree**

0 95 190 380 570 Meters 1:4,500

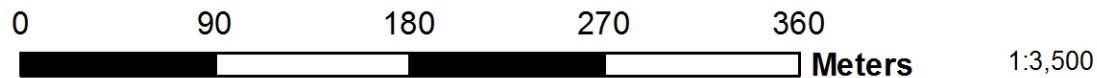
© Crown copyright and database rights 2016 OS EUL 100017428  
You are permitted to use this data solely to enable you to respond to, or interact with, the organisation that provided you with the data. You are not permitted to copy, sub-licence, distribute or sell any of this data to third parties in any form.







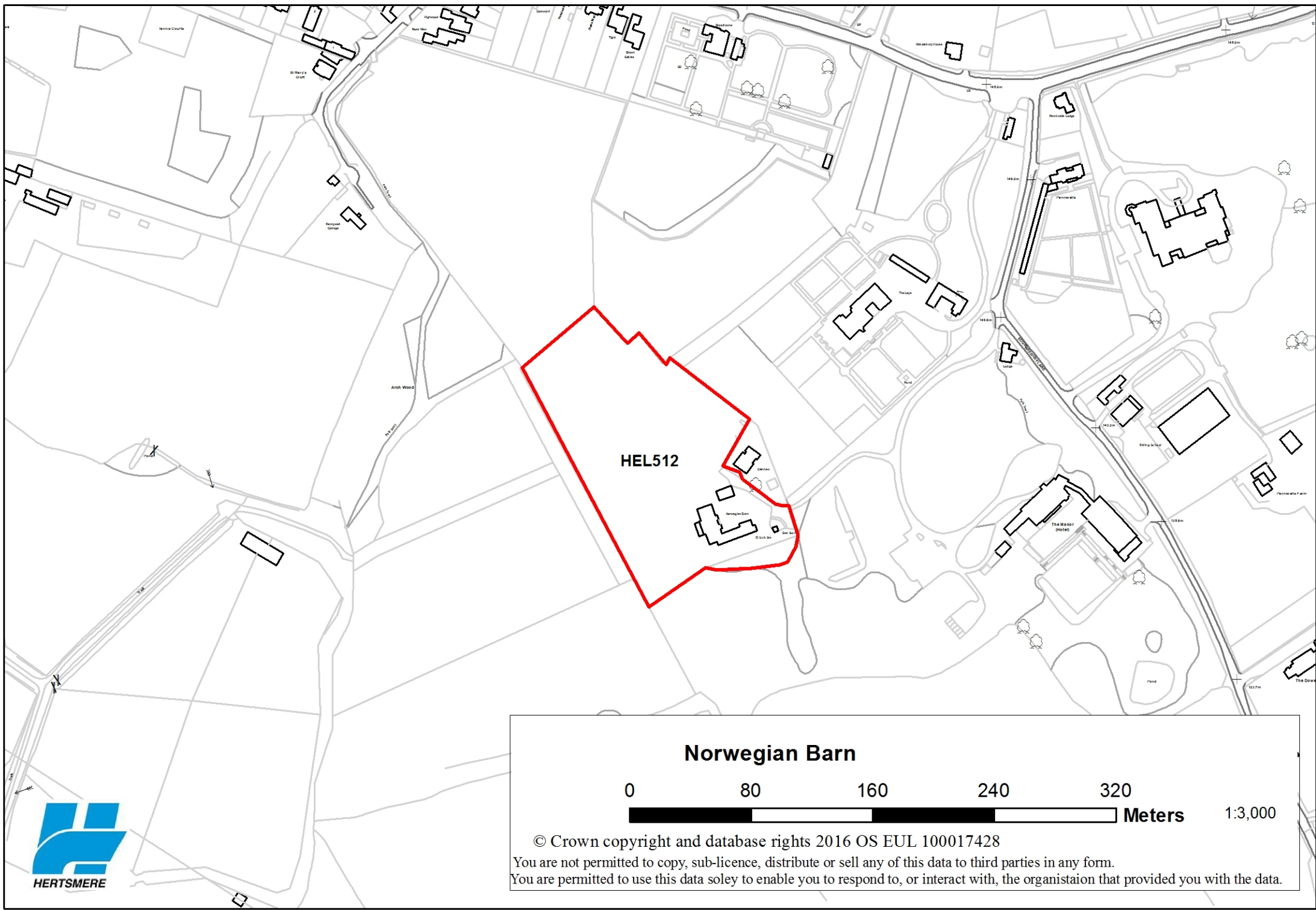
**Land adjacent to Lissmirrane Industrial Estate**



© Crown copyright and database rights 2016 OS EUL 100017428

You are not permitted to copy, sub-licence, distribute or sell any of this data to third parties in any form.  
 You are permitted to use this data solely to enable you to respond to, or interact with, the organisation that provided you with the data.





HEL512

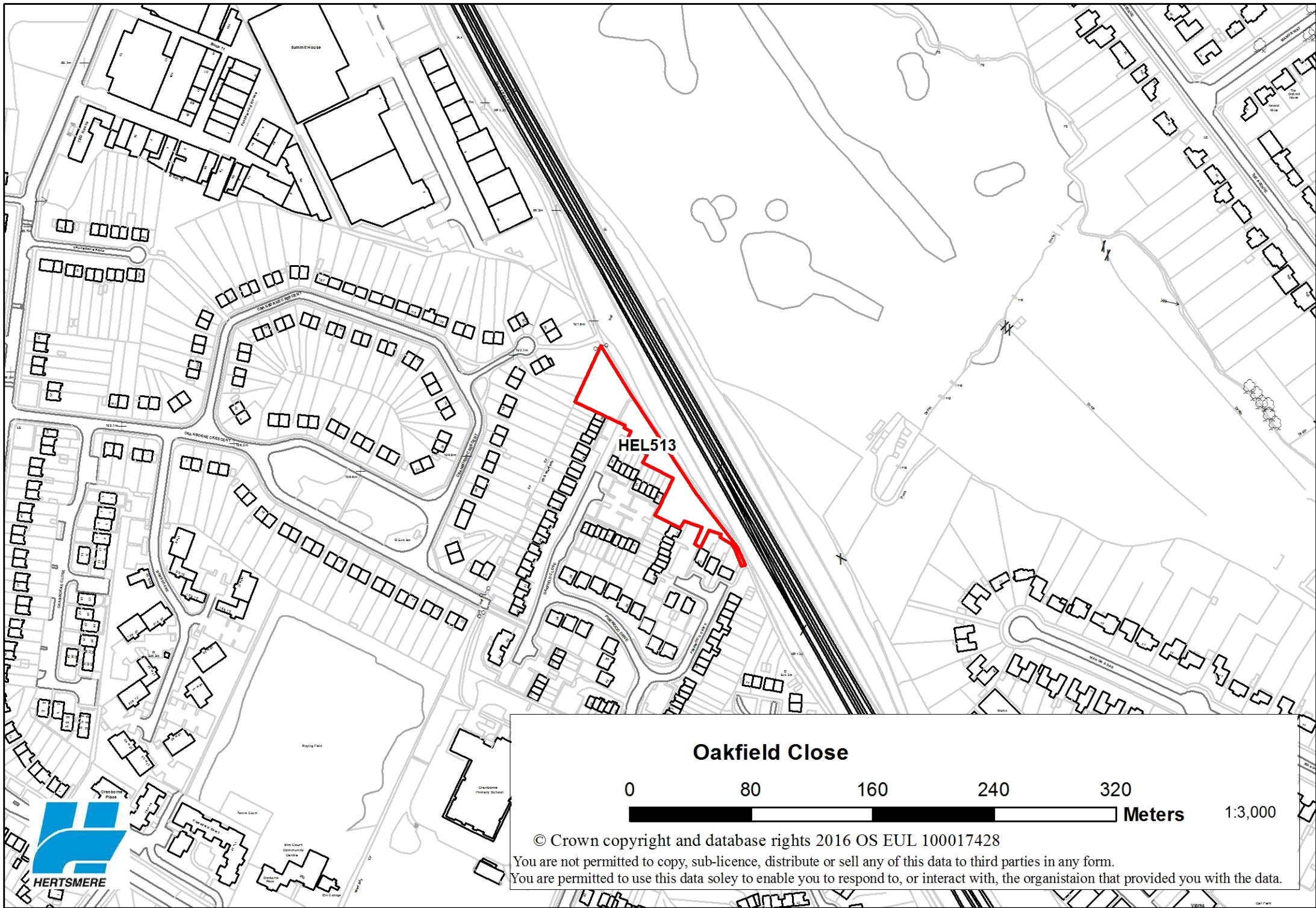
### Norwegian Barn



© Crown copyright and database rights 2016 OS EUL 100017428

You are not permitted to copy, sub-licence, distribute or sell any of this data to third parties in any form.  
You are permitted to use this data solely to enable you to respond to, or interact with, the organisation that provided you with the data.





### Oakfield Close



© Crown copyright and database rights 2016 OS EUL 100017428  
You are not permitted to copy, sub-licence, distribute or sell any of this data to third parties in any form.  
You are permitted to use this data solely to enable you to respond to, or interact with, the organisation that provided you with the data.