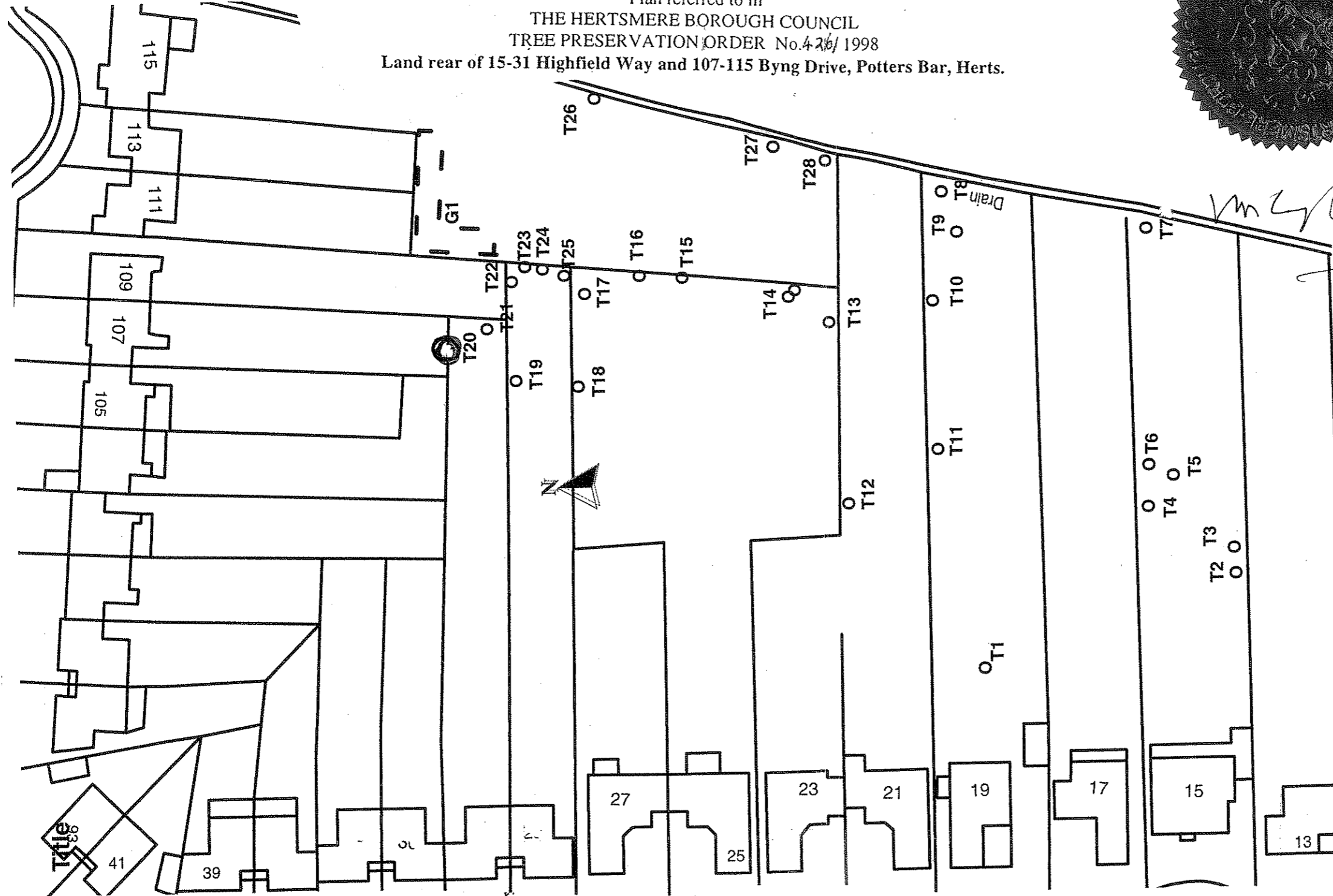


TOWN AND COUNTRY PLANNING ACT 1990

Plan referred to in
THE HERTSMERE BOROUGH COUNCIL
TREE PRESERVATION ORDER No. 426/1998
 Land rear of 15-31 Highfield Way and 107-115 Byng Drive, Potters Bar, Herts.



SCHEDULE OF TREES	
No	TYPE
T1	Willow
T2	Beech
T3	Beech
T4	Birch
T5	Birch
T6	Birch
T7	Beech
T8	Ash
T9	Ash
T10	Ash
T11	Ash
T12	Beech
T13	Oak
T14	2 x Ash
T15	Oak
T16	Oak
T17	Ash
T18	Oak
T19	Willow
T20	Oak
T21	Oak
T22	Oak
T23	Ash
T24	Ash
T25	Ash
T26	Cypress
T27	Cypress
T28	Pine
G1	14 x Cypress 1 x Pine

THE COMMON SEAL OF HERTSMERE BOROUGH COUNCIL
 WAS HEREUNTO AFFIXED THIS *Fourth* DAY OF
December 1998 IN THE PRESENCE OF :

This Order was **VARIED** by
 Hertsmere Borough Council
 as indicated on the Attached Plan.
REPOSITION OF T20
 on the **THIRD** day
 of **AUGUST** in the year **2010**

(Signed) **P.H. COPLAND**

CHIEF EXECUTIVE

Map Ref. TL 257 014

**HERTSMERE
 BOROUGH COUNCIL**
 Civic Offices
 Borehamwood
 Herts. WD6 1WA

SCALE 1:600	DATE 4.12.98
DRAWN P.J.B	CHECKED
DRAWING No TP 747	

Reproduced from the Ordnance Survey map with the permission of the
 Controller of Her Majesty's Stationery Office.
 Crown Copyright reserved.
 Licence Number LA078219 Hertsmere