

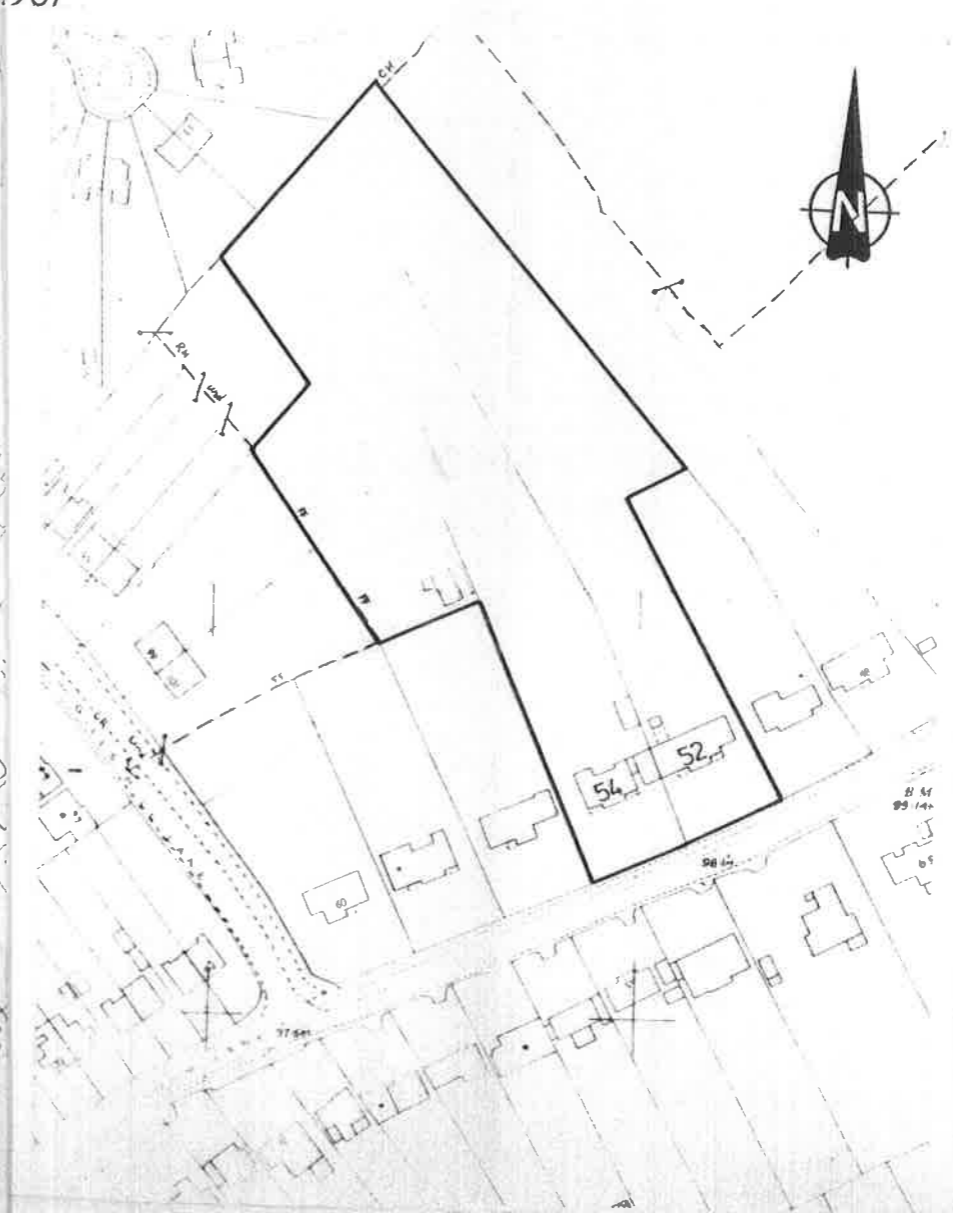
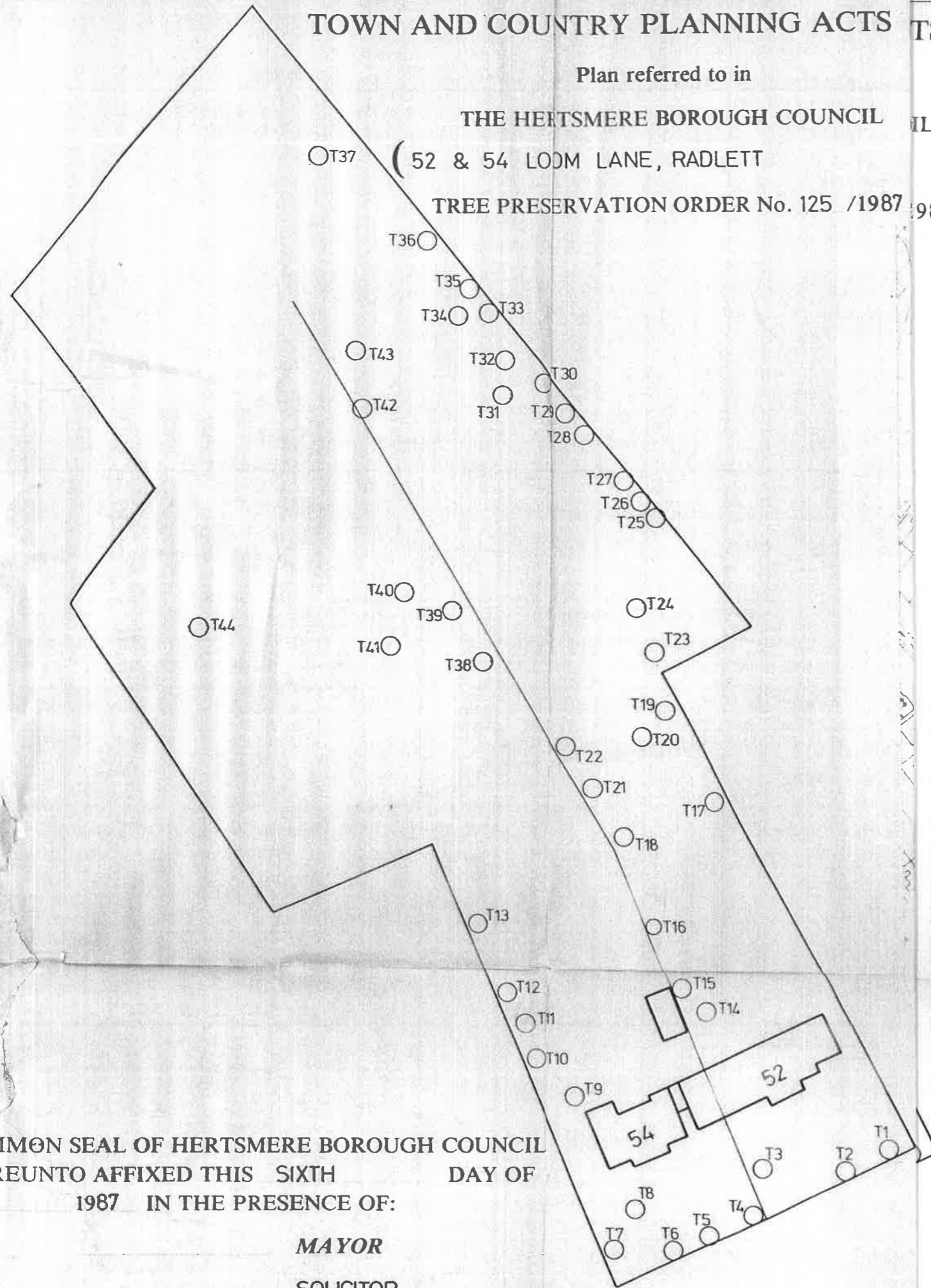
TOWN AND COUNTRY PLANNING ACTS 1971-1974

Plan referred to in

THE HERTSMERE BOROUGH COUNCIL

( 52 & 54 LODM LANE, RADLETT )

TREE PRESERVATION ORDER No. 125 /1987 1987



SCHEDULE OF TREES

| No. | TYPE                |
|-----|---------------------|
| T1  | Purple Leaved Plum  |
| T2  | Purple Leaved Plum  |
| T3  | Cedar               |
| T4  | Hawthorn            |
| T5  | Hawthorn            |
| T6  | Hawthorn            |
| T7  | Purple Leaved Plum  |
| T8  | Leyland Cypress     |
| T9  | Lawson Cypress      |
| T10 | Purple Leaved Plum  |
| T11 | Purple Leaved Plum  |
| T12 | Purple Leaved Plum  |
| T13 | Lime                |
| T14 | Cypress             |
| T15 | Cherry              |
| T16 | Cherry              |
| T17 | Cherry              |
| T18 | Cherry              |
| T19 | Maple               |
| T20 | Blue Atlantic Cedar |
| T21 | Norway Maple        |
| T22 | Maple               |
| T23 | Purple Leaved Plum  |
| T24 | Smooth Cypress      |
| T25 | Oak                 |
| T26 | Ash                 |
| T27 | Oak                 |
| T28 | Norway Maple        |
| T29 | Purple Leaved Plum  |
| T30 | Oak                 |
| T31 | Cypress             |
| T32 | Grey Willow         |
| T33 | Norway Maple        |
| T34 | Ash                 |
| T35 | Oak                 |
| T36 | Sycamore            |
| T37 | Poplar              |
| T38 | Silver Birch        |
| T39 | Scots Pine          |
| T40 | Scots Pine          |
| T41 | Scots Pine          |
| T42 | Oak                 |
| T43 | Ash                 |
| T44 | Silver Birch        |

COMMON SEAL OF HERTSMERE BOROUGH COUNCIL  
 HEREUNTO AFFIXED THIS SIXTH DAY OF  
 1987 IN THE PRESENCE OF:  
 \_\_\_\_\_ MAYOR  
 \_\_\_\_\_ SOLICITOR

HERTSMERE  
 BOROUGH COUNCIL  
 Civic Offices  
 Elstree Way  
 Borehamwood  
 Herts WD6 1WA

|                    |                  |
|--------------------|------------------|
| SCALE<br>1:500     | DATE<br>17-2-87  |
| DRAWN<br>PAC       | CHECKED<br>R.D.L |
| DRAWING No. TP/429 |                  |

Reproduced from the Ordnance Survey map with the permission of the Controller of Her Majesty's Stationery Office Crown Copyright reserved.