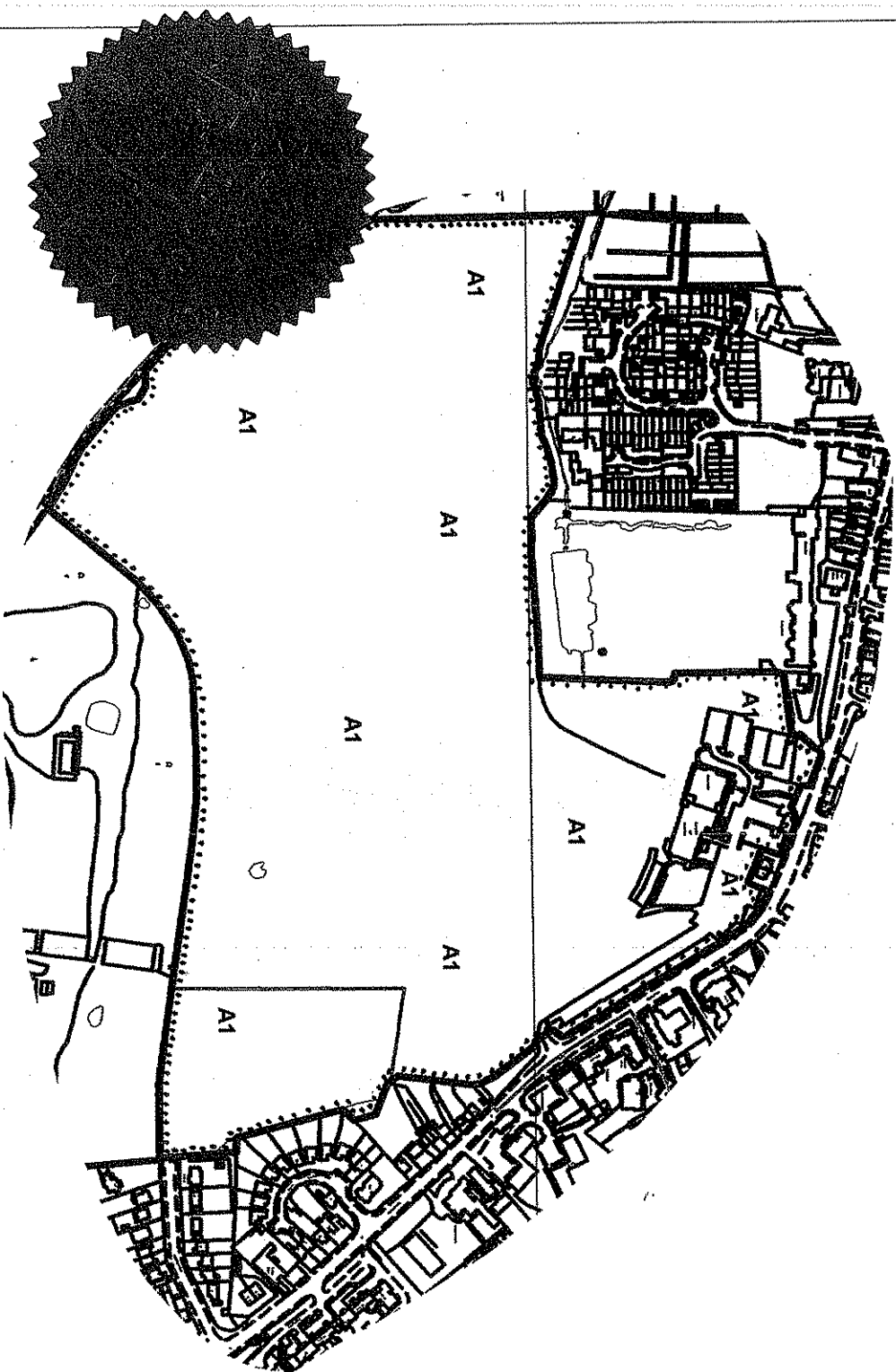


# TOWN AND COUNTRY PLANNING (TREES) REGULATIONS 1999

Plan referred to in THE HERTSMERE TREE PRESERVATION ORDER (Bushey Golf & Country Club, High Street, Bushey, Herts) No 17/2007



THE COMMON SEAL OF HERTSMERE BOROUGH COUNCIL  
WAS HEREUNTO AFFIXED THIS Fourth day of April 2007

IN THE PRESENCE OF:

1. 2. 3. 4. 5. 6.

(Signed) Authorised Officer

## SCHEDULE OF TREES

No Type  
A1 All trees of whatever species within the area marked A1 on the map

This Order was confirmed by the Hertsmere Borough Council without modification on the TWELFTH day of JUNE in the year 2007

Map Ref: TQ 1339,9505

Hertsmere Borough Council  
Civic Offices  
Borehamwood  
Herts WD6 1WA

SCALE: 1:5000 DATE: 04/04/2007

DRAWN BY: SW CHECKED MS

DRAWING NUMBER: 17/2007