

Hertsmere's & Parks Community News

Countryside
Management
Service



Issue 29 - Autumn/Winter 2012



Dog Control Order

Do you know the dos and don'ts for taking your dog out in public places?
See page 4 for further details

Featuring:
Fishers Field picnic - page 2
Herts Youth Games 2012 - page 8

parks@hertsmere.gov.uk

Parks News

Fishers Field picnic



In September the Mayor of Hertsmere and James Clappison MP joined over 250 people to enjoy fantastic weather and a celebratory atmosphere at the annual family picnic at Fishers Field Local Nature Reserve, Bushey.

Attractions included learning all about recycling, a demonstration by Stephen Rook, master blacksmith from Newlyn Forge, meeting Kevin from Animal Rescue with Molly one of his rescued foxes, a bat stall with rescued Pipistrelle and Leisler's bats and children's activities such as making bird boxes with the RSPB, making badges and recycled paper flower pots. There was also a wide range of food including sandwiches and delicious homemade cakes baked by members of the Friends of Fishers Field.

Prior to the picnic young budding wildlife enthusiasts descended on the site to discover Incredible Insects at Fishers Field. This event, run in conjunction with Meet the Species, part of the London 2012 Cultural Olympiad, aimed to identify and record as many species as possible amongst the great diversity of insects to be found there.

The group used a number of different methods to study these mini beasts including a light trap left out overnight to capture nocturnal moths, pitfall traps to catch ground-dwelling insects and also observed aquatic life in the new wildlife pond. Some of the

most interesting and striking specimens discovered were a magnificently coloured Emperor Dragonfly defending its territory, several ground beetles, a selection of beautifully coloured and marked moths such as the Brimstone, Angle Shades, Silver Y and Light Emerald, as well as a huge garden orb-weaving spider.

The Friends of Fishers Field is celebrating over 15 years since its inception. The group works tirelessly to conserve, develop and promote Fishers Field Nature Reserve for the benefit of the wildlife, which in turn benefits the local community.



Children learning about bats



The Friends of Fishers Field with the Mayor, Cllr Winters and James Clappison MP



Green Flag Award celebration

Thirty-seven sites across the county have been given accolades in this year's Green Flag Awards, which recognises the nation's best green spaces.

Representatives from nearly 20 different local authorities, volunteer groups, community trusts and businesses gathered at Bushey Golf and Country Club for the presentation organised by the parks teams at Hertsmere Borough Council and Broxbourne Borough Council in July.

Hertsmere holds the highest number of Green Flag Awards in the county after retaining the awards for Aberford Park, Borehamwood, Bushey Rose Garden, Fishers Field Nature Reserve and King George Recreation Ground in Bushey and Oakmere Park and Parkfield in Potters Bar.



Cllr Jean Heywood speaking at the ceremony



Pictured are representatives from Hertsmere's Friends groups, council and contractors with the Mayor, Cllr Pat Strack, at the award ceremony



Hertsmere Mayor Cllr Pat Strack officially opens the Diamond Jubilee cycleway, with help from Ladbrooke School pupils Sophie, left, and Rahul, right.

Diamond Jubilee Cycleway



The cycleway through Parkfield, Potters Bar, is now open and forms a safe route linking the High Street with Darkes Lane.

It has been dedicated as the Diamond Jubilee

Cycleway in honour of the Queen's 60 years on the throne.



Hertsmere Mayor Cllr Pat Strack, left, and Cllr Jean Heywood, centre, with Veteran-Cycle Club member John Elsdon, and his 1878 Pennyfarthing

Aberford Park pond

The bank level around the wildlife pond in Aberford Park, Borehamwood, has been raised to stop excess water overflowing on to the adjacent footpath and into neighbouring properties.

This work was carried out by Hertsmere's engineering services using soil from the local area. The raised bank will be allowed to regenerate naturally and if needed, additional wildflower plants will be supplied and planted by the members of the Borehamwood Four Parks Friends Association.



Dog Control Order

Hertsmere Borough Council's (HBC) animal warden, Lesley Lee, and Police Community Support Officers (PCSOs) are currently conducting joint evening patrols of parks and open spaces to offer dog owners and walkers advice on responsible dog ownership.

Under the Clean Neighbourhood & Environment Act, a number of authorised officers within the council and PCSOs can issue fixed penalty notices (FPNs) for the following offences:

- Failing to remove dog faeces.
- Failing to put dog on lead if directed to do so.
- Allowing a dog to be in an area of exclusion, including fenced and unfenced play areas, sports courts and marked out football pitches.

Lesley feels that ultimately promoting responsible

dog ownership is a far better approach than issuing FPNs, however, if this is her only option, then that is the route she takes. The fixed penalty notice fine is £75 and there is no right of appeal. A FPN can only be issued by an authorised officer and/or PCSO when they witness the offence.

If a resident witnesses a person in charge of a dog failing to clear up

after their dog, and are able to provide the council details of where the dog owner lives, then our policy is to write to the owner/occupier of the property to make them aware of their responsibilities and to advise that if witnessed by an authorised officer and/or PCSO then a FPN will be issued. Unfortunately we cannot respond to anonymous complaints.

Some frequently asked questions about the fixed penalty notices:

How much is the fine?

The fine for littering, dog fouling and other dog-related offences is £75 which must be paid within 14 days. A discount of £25 will be applied if the fine is paid within 10 calendar days.

How do you pay a fine?

You can pay by debit card online or via an automated telephone service on 020 8207 7575. Please note you cannot pay the fine at the time of issue.

Can I appeal a fixed penalty notice?

No. If you don't think you should have been issued with a fine you can choose not to pay it but this means you will be prosecuted, you may have to go to court and you could face a fine of up to £2,500.

What if I have difficulty paying the fine?

If you have difficulty paying the fine you should contact the council to discuss the issue on 020 8207 7435.

What happens to the money you get from fines?

All income from fines is put back into improving the local environment.





Is this a moneymaking exercise?

No. This is about increasing pride in our area. There are no set number of fines that staff have to issue and no commission. In fact, we would much rather people picked up after their dogs and didn't drop litter in the first place.

Do you fine young people?

The fines only apply to those aged 16 or over. Anyone younger will be given a warning notice and a letter will be sent to their parents or legal guardian. If they are obstructive, evasive or aggressive towards the officer, legal action may be taken.

For more information or any other dog-related enquiry, please contact Lesley on 020 8207 2277 or email lesley.lee@hertsmere.gov.uk.



parks@hertsmere.gov.uk



Winter shrub reduction

As part of the shrub reduction programme, Studio Way and the Campions in Borehamwood will be visited over the winter.

The aim will be to tackle overgrown areas to promote natural regeneration.

Ripon Park

Unfortunately some of the large poplars in Ripon Park in Borehamwood have reached a condition where they are no longer safe and have been removed. However, over the winter we will be carrying out tree planting in the park.



Potters Bar Rotary Club donation

A big thank you to Potters Bar Rotary Club who have donated £100 to buy spring bulbs for Oakmere Park.



Play improvements on the Studio Estate

Two play areas have been improved this summer on the Studio Estate in Borehamwood.



An out-of-date climbing frame has been removed from Kelly Court, a small play area aimed at under eights, and replaced with a seesaw, roundabout, springer and slide.

Potterswood Park now has two football goal ends, a challenging climbing frame, nest swing and springer. The project has been

funded by a local development (known as a Section 106 agreement).



New equipment in Potterswood Park



Studio Estate play area

Clarendon Park

Two new benches have been installed at Clarendon Park in Borehamwood using funding from a local development (known as a Section 106 agreement) following a request by the Borehamwood Four Parks Friends Association.



New outdoor gyms

Residents now have the chance to get fit and healthy in their local park for free.

New outdoor gyms have been installed at Oakmere Park in Potters and the Moatfield in Bushey. Hertsmere Together, the local strategic partnership, has funded three exercise stations in Potters Bar and the Queen Elizabeth II Fields Challenge has part-funded three pieces in Bushey.

Affinity Sutton Housing Association is funding a new gym at Ripon Park in Borehamwood which should be open this winter. More details will be published in the next newsletter.



Pictured are members of the Friends of Potters Bar Parks trying out the equipment in Oakmere Park

Going for gold

Hertsmere Borough Council got into the Olympic spirit with creative flower bed schemes across the borough.

The beds outside the Civic Offices in Borehamwood were planted up with a running figure and different medal themes. The beds along Darkes Lane in Potters Bar were planted up in the London 2012 colours.



Well House Dell

Well House Dell lies in Radlett on the north boundary of Salter's Field between the Cricket Club's second pitch and Watling Street. It is a small wooded valley which formed part of the Kendal Hall estate, some 40 acres of which was sold to Aldenham Parish Council in 1938.

Maps from the early 19th century clearly show a dell. Rumour has it that the dell was created when the railway line was being constructed in the 1860s. There are many gravel pits around Radlett, which provided gravel for both the railway in the 19th century and for house construction in the 20th. It is possible that Well House Dell made a contribution to the railway construction, but it is not for that reason the dell was created.

In the Aldenham Tithe Award of 1838, nearly 25 years before the railway construction, there is listed a grass field known as Well House Field and a woodland owned by William Robert Phillimore. There was also a house and a well which was protected by a wooden lid. Who built them, when and why?

One theory is they may have been part of The



Chantry founded by Sir Humphrey Coningsby at Cophorne Hill (as Cobden Hill was formerly known). It was licensed for the celebration of the Eucharist and baptism of infants in 1520. A house, built in the 18th century on Cobden Hill, bears the name The Chantry, but the original 1520 building was destroyed.

Some say Sir Humphrey's Chantry was in the dell, but the foundations of the house are thought to be far too modern for it to have been a 400 year old house. Anyway who would build a house at the bottom of a dell? The photograph that accompanies this article is part of the F Stingemore collection which has been preserved and digitized by Hertfordshire Archives & Local Studies.

(Extract from article written by Philip Eastburn)

Community Services

Herts Youth Games

Youngsters from across Hertsmere were honoured for their sporting achievements at a Herts Youth Games presentation ceremony in September.

More than 100 young people from Hertsmere took part in the games at the beginning of July, competing against teams from nine other districts across the county in 10 different sports which included aquathlon, athletics, hockey, badminton, table tennis and the Paralympic sport, boccia

The day-long competition, organised by Hertsmere Borough Council's (HBC) community sports officer Helen Bottomley, was also lit up by the Olympic torch on its way across the country ahead of the start of the London Games.

Hertsmere was crowned third overall in the competition, which took place at the University of Hertfordshire de Havilland campus in Hatfield. North Hertfordshire came top and East Hertfordshire second.

At the presentation ceremony at HBC's Civic Offices in Borehamwood, Hertsmere mayor Councillor Pat Strack thanked everyone who took part. Each participant was presented with a certificate and team managers were also thanked for their contribution.

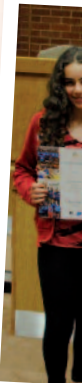
Cllr Strack said: "Regional competitions like the Herts Youth Games are important not only because they give young people a chance to explore their sporting potential, but also because they help to reinforce the Olympic and Paralympic values that have been at the centre of this year's London Games.

"I want to thank everyone who took part, and everyone who helped to organise the event, especially the team managers and parents, without whose support the games could not have happened."

Cllr Brenda Batten, portfolio-holder for leisure, culture and health, added: "All those young people who took part in the games took something away with them that they will remember for the rest of their lives.

"They not only had a brilliant day playing sport and got to see the Olympic torch, but I hope that they learnt through sport it is possible to make new friends."

Herts Youth Games has been running for 17 years. Preceding the event there were trials and training at different locations across the borough.



Cllr Strack
with the



Cllr
te

es News

es 2012



ick and members of Hertsmere's netball team
ir certificates at the presentation ceremony



Strack and members of Hertsmere's athletics
am with their certificates at the presentation
ceremony

Tennis programme in Bushey continues

The successful tennis programme continues at King George Recreation Ground throughout the year. 3Tenn is available to improve your tennis skills as follows:

Saturday mornings

10am to 11am - four to nine year olds
11am to 12pm - 10+ year olds
No booking required / £3 per session

Sunday mornings

10am to 11am - four to nine year olds
11am to 12pm - 10+ year olds
No booking required / £3 per session

After school sessions

Tuesdays to Thursdays from 4pm to 5pm

These sessions must be booked in advance. Price to be confirmed. Adult groups and individual lessons are available on request.

All sessions are delivered by professional qualified Lawn Tennis Association licensed tennis coaches.

For more information or to make a booking contact David Shann on 07940 428310, email david.shann@3tenn.net or visit www.3tenn.net



Tennis programme in Borehamwood

Residents in Borehamwood can continue developing their skills and having fun with Independent Tennis.

Come along to Meadow Park in Brook Road every Saturday for a free taster session from 9.30am to 10.15am or sign up for the star team tennis sessions from 10.15am to 11.15am costing £5.

For further details contact Monica Becerra on 077072 211959 or Rafael Zurita on 07762 78682 or visit www.independenttennis.com



fifty⁵⁰plus

The new autumn/winter 50+ brochure is now available from leisure centres and local libraries or phone 020 8236 3100 to obtain one.

Fifty Plus run a host of weekly activities, courses, special events and trips.

Weekly activities and courses:

Aqua aerobics, art, badminton, ballroom and Latin dancing, bowls-indoor, bowls-easy going, bowls for beginners, bowls-outdoor, bridge, careful conditioning, chair-based exercises, golf, keep fit, line dancing, musical keyboard, Pilates, Scrabble, singing, stretch & tone, swimming, table tennis, Tai Chi, tap dancing, Yoga and Zumba Gold.

Special events:

A fortnight of taster sessions

Monday 21 January - Friday 1 February 2013.
Tickets can be applied for on 020 8236 3100.



Trips:

Mighty Wurlitzer Christmas concert, London Christmas lights & sights tour

Thursday 22 November 2012.

Sherry & mince pies included and tour joined by a blue badge guide.

£34

Special Christmas lunch cruise - Runneymede

Thursday 6 December 2012.

Special Christmas menu and a gift from Father Christmas.

£45

Royal Greenwich - Cutty Sark & cable car

Friday 22 March 2013.

A guided tour by a blue badge guide.

£40

Hall Place & Gardens - with guided tour

Thursday 25 April 2013.

£23

For further information contact us:

Tel: 020 8236 3100

Visit: www.hertsmereleisure.co.uk

Events News

The events season started with Easter egg trails and hunts in every part of the borough. Many thanks go to all the Friends groups for their support and time and to Tesco who sponsored Easter events in Potters Bar (Liz Wright, Community Champion) and Borehamwood (Marion Naylor, Community Champion).



One of the main events this year was the celebration of the centenary of King George Recreation Ground on Saturday 5 May. Although the weather was intermittent hundreds still turned out for the Punch and Judy show, Borehamwood Brass Band, magic show, 5-a-side competition, vintage fairground rides just to name a few.



Pictured are scenes at the King George Recreation Ground centenary celebrations

The year quickly moved on towards the summer months, bringing with it the Bushey Festival. There were many favourite events from past years such as the teddy bears picnic and the dog show, as well as new additions including the Jim Phillips Jazz Band and Tai Chi in the Rose Garden.

This year also saw the return of the BMX ramps, which were supported by local ward councillors and the police in Bushey. The event enabled young people to experience the thrills and spills of the grind rail, half pipe and launch ramp. Parents who came along to support this event said it offered exercise to young people and took them away from computer games at home.



As part of the events programme, fun fairs have generously offered free rides once again for children and adults with special needs. Over 300 young adults and children enjoyed free rides on given days throughout the year. These events offer our special needs clients the chance to enjoy the funfair at their own pace.

Forthcoming Events

Can't think what to do at the weekend? Want ideas for the autumn or winter? Well look no further! We have a packed events calendar to entertain all ages. For a full list and further details on each event please visit: www.hertsmereleisure.co.uk and click 'park events' or contact Hertsmere Leisure, on 020 8236 3100. Keep checking the website as more dates are to be added...



November

Monday 5 - Fireworks display

Meadow Park, Borehamwood

From 7pm to 7.45pm.

Free event. For further information call Elstree & Borehamwood Town Council on 020 8207 1382.



December

Saturday 15 - Carols in the park

King George Recreation Ground, Bushey

From 3pm to 4pm.

Sunday 16 - Christmas in the Rose Garden

From 2pm to 4pm.

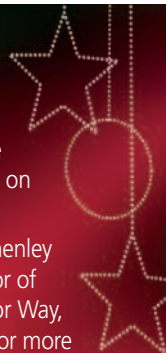
Family fun with Father Christmas, carols, storytelling, drawing. Christmas cafe. Free entry.



Borehamwood and Elstree Christmas lights switch on

To mark the festive season Elstree & Borehamwood Town Council is bringing some festive cheer to Borehamwood and Elstree with the annual Christmas lights switch on event on 2 December.

The family fun event takes place from 2pm to 7pm behind All Saints Church on Shenley Road. The ever popular ice rink returns again this year. At 4pm Charles Kelly, Mayor of Elstree and Borehamwood, will turn on the lights illuminating Shenley Road, Manor Way, Leeming Road, and Elstree High Street, formally marking the start of the season. For more information contact the town council on 020 8207 1382.



The Countryside Management Service (CMS) works in partnership with Hertsmere Borough Council and other local authorities across Hertfordshire helping communities to care for and enjoy the environment. For more information, see their website at www.hertslink.org/cms

Furzefield Wood Local Nature Reserve

This winter the Countryside Management Service (CMS) will be continuing management of Furzefield Wood in Potters Bar, a small ancient woodland that has a long tradition of hazel shrub coppicing dating back hundreds of years.

When cut, hazel produces many new shoots which can be harvested every seven to eight years. Coppicing also allows light into the wood making it a fantastic place to see carpets of bluebells in April and May.

A local coppice worker will be cutting hazel in part of the wood, turning the stems into a variety of products such as straight stakes and binders for the traditional craft of hedge-laying and smaller bendy stems for use in the garden as bean poles and pea sticks. The remaining twigs are bundled up as faggots for river bank protection.

In recent years the new hazel shoots have suffered from severe browsing damage by rabbits and deer. To protect the re-growth, temporary fencing will be erected around the cut stumps and many new hazel saplings will be planted. To visit the site and find out more about it, view the site leaflet at: www.hertslink.org/cms/getactive/placestovisit/furzefield/



Example of a coppiced hazel in Furzefield Woods



Maxwell Hillside Park

Over the next few months Maxwell Hillside Park, Borehamwood will be getting something of a minor makeover.

CMS has been working with the council to develop proposals to improve elements of the park, including construction of a footpath through the southern part of the site, linking the Hillside Avenue entrance with Bullhead Road and installation of two new entrance signs.

There will also be some specimen tree planting, with the aim of providing future replacements for the large mature oak trees and an increase in the areas of meadow grass for the benefit of wildlife.



Oakmere Park bat walk

A highly successful bat walk was held at Oakmere Park, Potters Bar in August with over 30 people joining CMS for an evening stroll.



Brookside Open Space

Work will be carried out this autumn to implement a key part of the five year management plan produced by CMS for Brookside Open Space in South Mimms.

The meadow will be restored by introducing new native wildflower species and once established the area will be managed by hay cutting. The scheme is being managed by CMS with funding provided by South Mimms Parish Council and Watling Chase Community Forest.

Participants were rewarded by fantastic displays of Pipistrelle bats darting between trees and Daubenton's bats flying low over the lakes to catch insects.

Local experts from the Herts and Middlesex Bat Group (HMBG) were on hand to help identify the different species using detectors to listen to the sounds made by bats when locating prey. The event was part of the Walks and More programme organised by CMS. Similar events can be found at www.hertsdirect.org/walksandmore and are advertised locally.

Composers Park

CMS and Hertsmere Borough Council were busy over the summer months consulting the local community on plans for Composers Park in Elstree.

The planned improvements received a very positive 'thumbs up' from local residents, with over 90% of respondents welcoming the ideas. An application has been submitted to the Heritage Lottery Fund by CMS, requesting funding to help realise the plans which will benefit people and wildlife.

If successful the funding will provide new interpretation boards, play equipment for older children and entrance improvements. The wildflower rich hay meadows of the park will also benefit from habitat management works that will ensure the meadows continue to be alive with bumblebees and butterflies for many years to come.





Finch Lane Allotments

Finch Lane allotments in Bushey is set to benefit from a range of improvements this winter including creation of a new wildlife pond, management of willow trees, restoration of hedgerows, hazel shrub planting and installation of bat boxes.

A new entrance sign and two new notice boards will also be installed to keep allotment holders up to date with developments. Over £2,000 of funding has been secured from Watling Chase Community Forest (WCCF) and the council for the project, with CMS volunteers undertaking much of the work.

Parkfields

In Elstree, CMS is helping with plans to deculvert the stream through Parkfields.

This will involve removing the concrete walls of the channel and making the banks a more natural shape.

Whilst Hertsmere Borough Council engineers work on restoring the channel, CMS will be advising on planting, protecting the surrounding wildflower-rich grassland and hopefully CMS volunteers will be involved in planting up the new stream banks.



Watling Chase Community Forest (WCCF)

Many of these projects are being supported by the WCCF Small Projects Fund administered by CMS.

The fund is a valuable means of stimulating small-scale projects and is awarded to schemes that involve the local community, improve the natural environment or promote enjoyment of the WCCF area.

Projects need to be of public benefit, appropriate to the ecology, landscape or archaeology of the area and can be up to 50% of the agreed costs, to a maximum of £2,000. To view the area covered by WCCF and apply for funding, see www.hertslink.org/cms/watchascomfor/ or contact CMS on 01462 459 395.

Contact details:



The Parks and Amenities team

We manage and maintain all council-owned parks in the borough with active involvement of the local community through Friends groups and planting days.

Freephone helpline
(office hours only): 0800 731 1810
Out of hours/24 hour
emergency 020 8207 2277/0845 300 0021

Steve Burton - Head of Street Scene **Ext: 5242**

David Smith - Parks and Amenities Manager.
Responsible for the coordination and senior management of all the maintenance work carried out within the borough. **Ext: 3880**

Jonathan Hawes - Cemetery Officer. Responsible for the management and development of Hertsmere's Allum Lane Cemetery, Affinity Sutton Homes contract work and allotments. **Ext: 3950**

Francesca Turze - Area Parks Officer. Responsible for maintenance and development of Borehamwood, Bushey, Elstree and Shenley parks and open spaces. **Ext: 3920**

Aaron Niblett - Area Parks Officer. Responsible for maintenance and development of Borehamwood, Potters Bar, Ridge and South Mimms parks and open spaces. **Ext: 3820**

Fiona Leadley - Landscape Design Officer.
Responsible for the design and management of schemes within parks and open spaces. **Ext: 5680**

Gill Clare - Administration Assistant. Responsible for parks administration. **Ext: 5701**

Community Services

Featuring activities for young people (Be there! Do it!) sport and museums: 020 8207 7801

Hertsmere Leisure



Leisure centres, events, play schemes and Fifty Plus: 020 8236 3100
Visit: www.hertsmereleisure.co.uk

Useful numbers

Street Scene:
(refuse collection, recycling and street cleansing) 020 8207 7480

Hertfordshire Highways:
(Hertfordshire Highways is responsible for maintaining all trees on the public highway verge) 0300 123 4047

Hertfordshire Police:
Non-emergency: 101
Emergency 999

Affinity Sutton Homes: 020 8235 7000

Aldwyck Housing Association: 01582 869101

Motorcycle Hotline:
(to report nuisance motorcycles) CARM 020 8207 7553

Countryside Management Service: 01462 459395

Aldenham Parish Council: 01923 856433

Elstree & Borehamwood
Town Council: 020 8207 1382

Ridge Parish Council: ridgeparish@live.co.uk

Shenley Parish Council: 01438 880064

South Mimms Parish Council: 020 8360 9223

Aldenham Country Park: 020 8953 9602

Shenley Park Trust: 01923 852629

This newsletter is published by Hertsmere Borough Council's Parks and Amenities team.

Any editorial enquiries should be addressed to: Fiona Leadley, Parks and Amenities, Hertsmere Borough Council, Civic Offices, Elstree Way, Borehamwood, Herts WD6 1WA
Telephone: 020 8207 7519
Fax: 020 8207 7499
Email: parks@hertsmere.gov.uk
www.hertsmere.gov.uk/parks

If you would like this newsletter in large print please call us.

For all the latest information about the council and things to do, find us on:

Facebook www.facebook.com/hertsmere

or follow us on Twitter @HertsmereBC