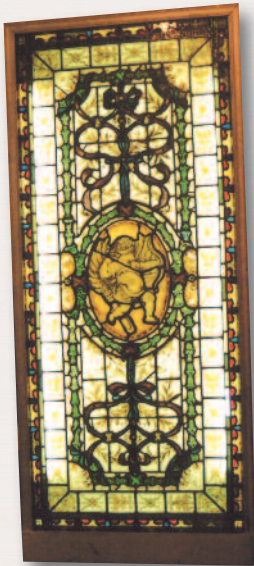


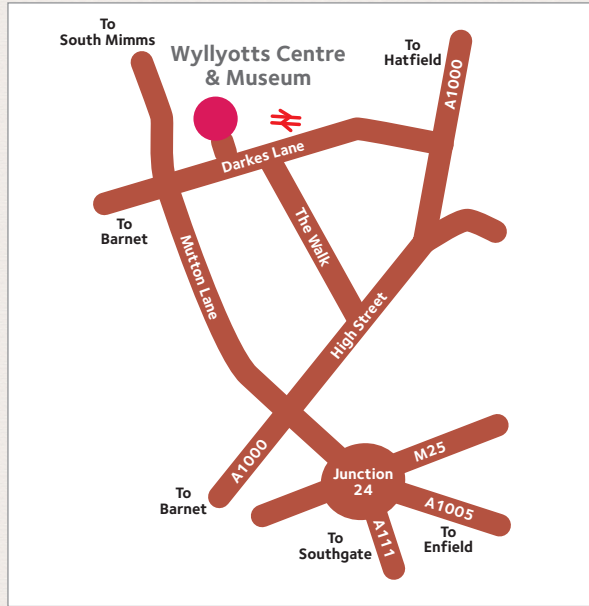


Puddingstone



Damaged Victorian stained glass windows removed from Northaw House when it became offices were restored to make this single illuminated display.

How to find us



Wyllyotts Centre,
Wyllyotts Place, Darkes Lane,
Potters Bar EN6 2HN

Phone: 01707 645005
www.hertsmere.gov.uk/Parks--Leisure/Museums--Theatres/Potters-Bar-Museum.aspx
Facebook: www.facebook.com/pottersbarmuseum

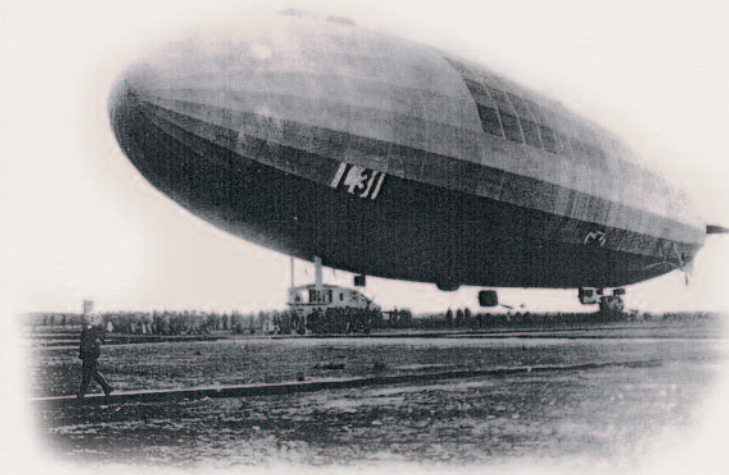
Opening Times

Monday - Closed
Tuesday 2.30pm - 4.30pm
Wednesday 2.30pm - 4.30pm
Thursday - Closed
Friday - Closed
Saturday 11am - 1pm
Sunday - Closed

Admission Free



Potters Bar Museum



Admission Free

Potters Bar & District Historical Society

As well as running the museum the PB&DHS runs monthly evening meetings on a variety of historic topics every year from September through to May. They are held in the 60 Plus room in the Wyllyotts Centre undercroft, starting at 8 pm. Details and dates are listed on a fixture card available in the museum or from the Membership Secretary, Chris Ruge-Cope on 01707 653221 or c.rugecope@btinternet.com



The Museum

Potters Bar Museum tells the story of the growth of Potters Bar from a tiny village on the Great North Road to the thriving present day town.

Opened in 1990, the Museum stands on an historic site; looking out onto the timber framed Wylyotts Manor, part of which dates back to the 14th century. There is reason to believe the site has been occupied since the Iron Age and certainly since Roman times. Some of the artefacts found during the construction of the Wylyotts Centre are on display in the Museum.



The Museum also contains many items from other sites in and around Potters Bar and from the motte-and-bailey castle at South Mimms, which for many years lay

unrecognised or forgotten.

The largest display relates to the Zeppelin L31, shot down over Potters Bar in 1916, showing a number of relics from the destruction of this First World War terror weapon.

The Museum specialises in social history

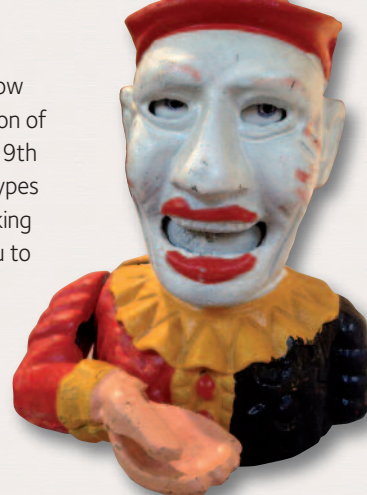


and small domestic objects now obsolete. A specialist collection of telephones, ranging from 19th century to latest novelty types are on display, some in working order which we welcome you to touch.

A collection of Roman silver coins found as a treasure hoard in the district is on display together with examples of Roman clayware made in a kiln excavated in the Parkfield open space in the 1950s.

Some natural history items are also on display, together with fossils, geological specimens such as Hertfordshire puddingstone and Mesolithic stone implements used by the earliest known inhabitants.

There is much more to Potters Bar than you think! Our stewards are on hand to help with any history enquiry as well as welcome your stories and reminiscences and provide assistance in identifying objects.



Wartime wardroom painting salvaged from HMS Poppy

Temporary exhibitions

A programme of changing exhibitions is mounted twice a year. See our Facebook Page to keep up to date with what's going on.

Group Tours and Lectures

Tours to explain the collections and exhibition can be arranged for schools and groups by arrangement with the Hon Curator.

The staff in the Museum are all volunteers from the Potters Bar and District Historical Society which is a registered charity (no. 299475) Hertsmere Borough Council provides the Museum accommodation and also grant-aids most of the running costs.



Potters Bar through the years...



c1898



c1910



1920s



1990s



2000s