

APPENDIX 3: FIGURES

FIGURE	DESCRIPTION
1	Field Arrangement Plan (Aardvark EM Limited, December 2020)
2	Designated heritage assets within 1km of PDA (Headland Archaeology DBA, December 2020)
3	Extract from the tithe map: Aldenham in the County of Hertford, 1839
4	Extract from Hertfordshire XLIV.4 OS map; revised 1896; published 1898
5	Extract from Hertfordshire XLIV.4 OS map; revised 1912; published 1914
6	Extract from Hertfordshire XLIV.4 OS map; revised 1934; published 1936
7	Extract from the tithe map: Aldenham in the County of Hertford, 1839
8	Extract from Hertfordshire XLIV.4 OS map; revised 1896; published 1898
9	Extract from Hertfordshire XLIV.4 OS map; revised 1912; published 1914
10	Extract from Hertfordshire XLIV.4 OS map; revised 1934; published 1936
11	Photograph of Aldenham House, undated
12	Painting of 'The Bridge, Aldenham House', undated
13	Image of the north-west gates at Aldenham House, undated
14	Aerial photograph of the 'BBC Overseas Broadcasting Service at Aldenham House and Grounds, Aldenham, 1946'
15	Aerial photograph of Aldenham Reservoir and environs, Elstree, from the south, 1937

16	Extract from Hertfordshire XLIV.4 OS map; revised 1896; published 1898
17	Extract from Hertfordshire XLIV.4 OS map; revised 1912; published 1914
18	Extract from Hertfordshire XLIV.4 OS map; revised 1934; published 1936
19	Historic England Asset Mapping, Penne's Place Scheduled Monument
20	Extract from the 1839 tithe map, Aldenham in the county of Hertfordshire
21	Extract from Middlesex V.NE OS map; revised 1895; published 1899
22	Extract from Hertfordshire XLIV OS map; revised 1938; published ca. 1946
23	A design for the south front of Hilfield Castle, undated
24	A design for the east front of Hilfield Castle, undated
25	Aerial photograph of 'Hilfield Castle and surrounding countryside, Bushey, from the south, 1949.'
26	Aerial photograph of the 'Construction of the Hilfield Park Reservoir, Bushey Heath, 1952'
27	Aerial photograph of the 'Construction of the Hilfield Park Reservoir, Bushey Heath, 1952'
28	Photograph of the view towards Field 1 with Hilfield Lodge to right of picture (late C20)
29	Photograph of the view towards Field 1 with Hilfield Lodge to right of picture (late C20)
30	Photograph of the view towards Field 1 from the garden of Hilfield Lodge (late C20)

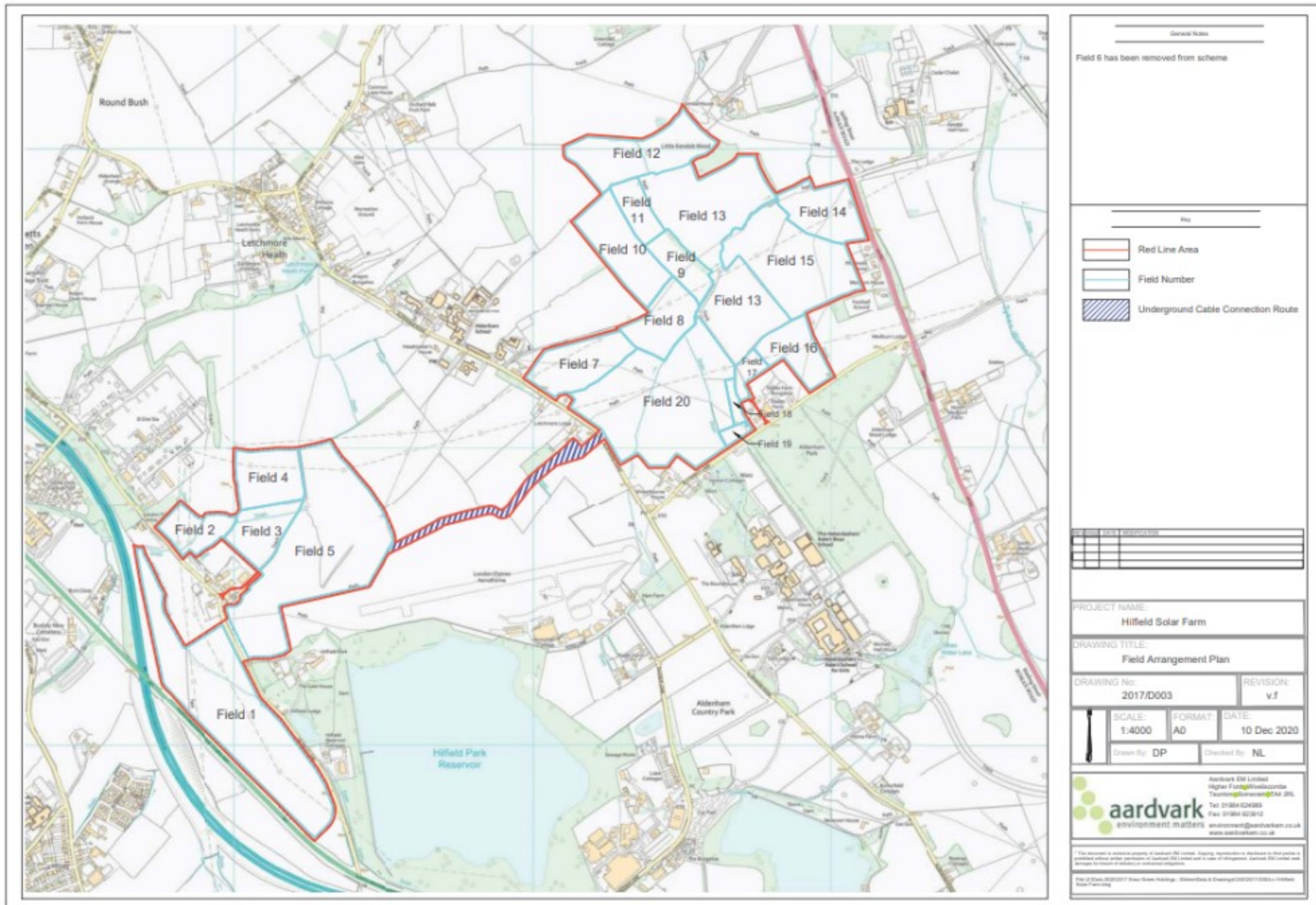
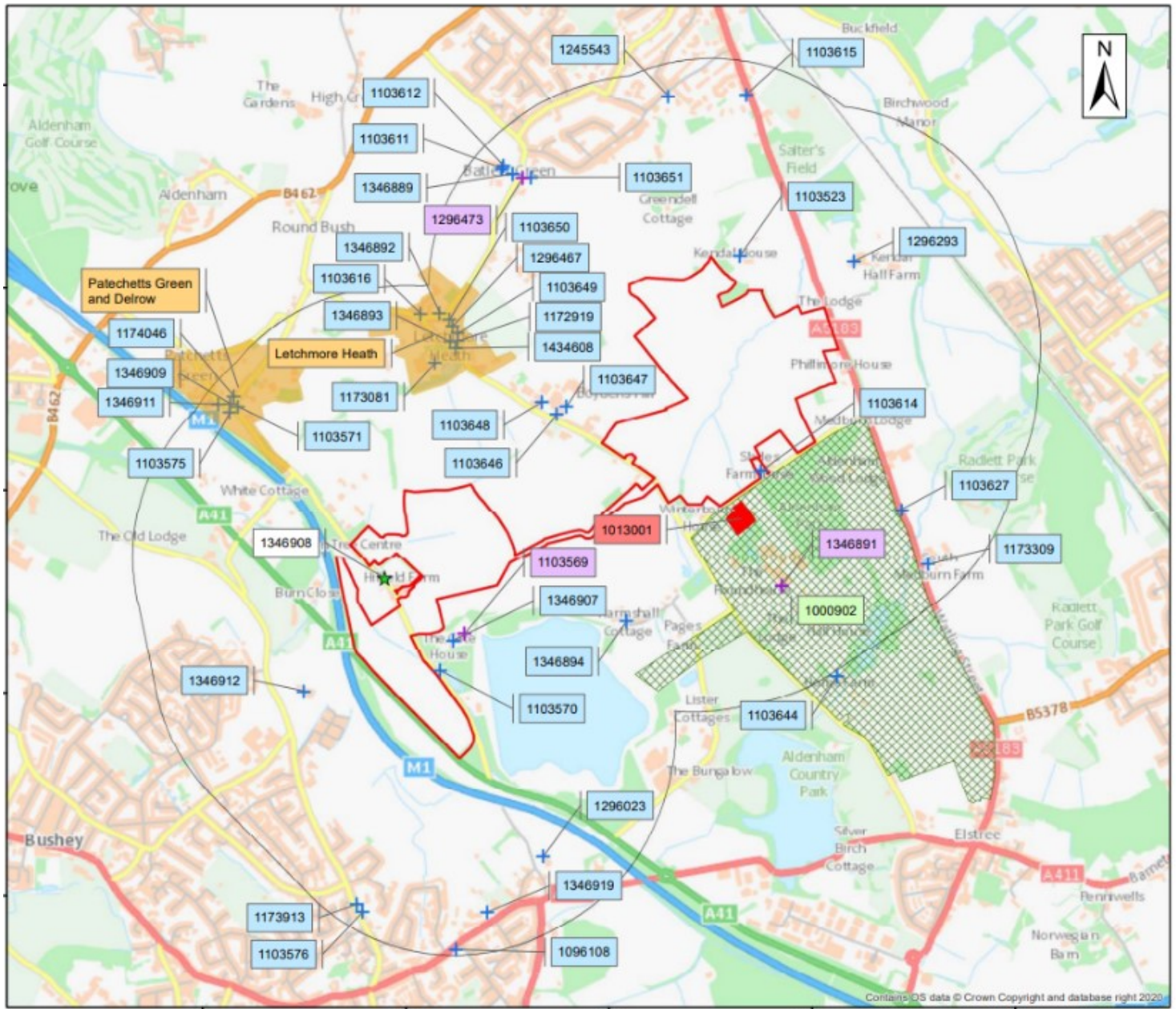


Figure 1: Field Arrangement Plan (Aardvark EM Limited, December 2020)



HEADLAND ARCHAEOLOGY

Key

- ★ De-listed building
- ✦ Grade II* Listed Building
- ✦ Grade II Listed Building
- Scheduled Monument
- ▨ Registered Park and Garden
- 1km study area
- ▭ Proposed Development Area
- Conservation Area

Metres
0 500

© Historic England 2020. Contains Ordnance Survey data © Crown copyright and database right 2018. The Historic England GIS Data contained in this material was obtained on 10th May 2020. The most publicly available up to date Historic England GIS Data can be obtained from <http://www.HistoricEngland.org.uk>.

Hilfield Solar Farm

Figure 3: Designated heritage assets within 1km of the Proposed Development Area

Figure 2: Designated heritage assets within 1km of PDA (Headland Archaeology DBA, December 2020)

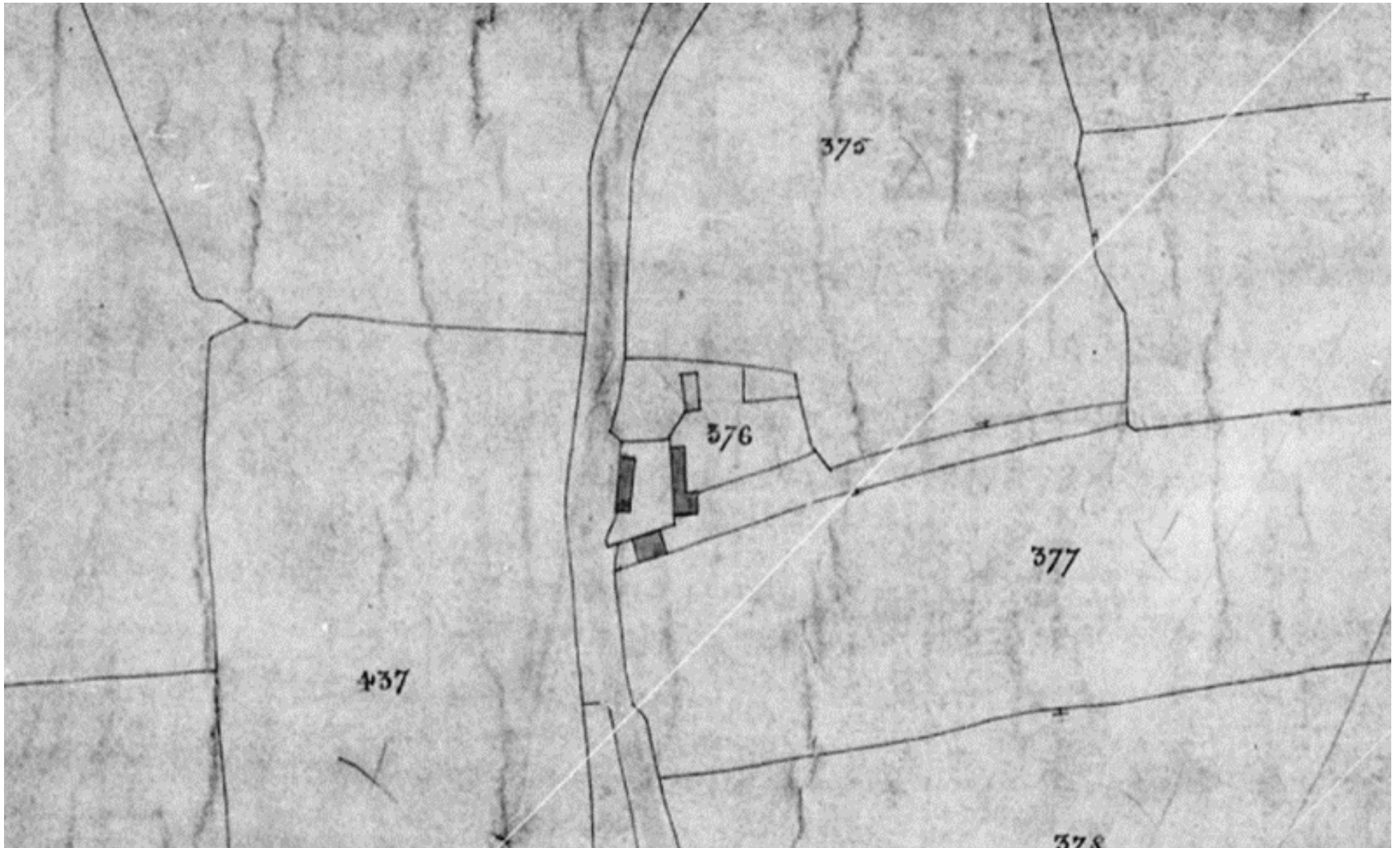


Figure 3: Extract from the tithe apportionment map: Aldenham in the County of Hertford, 1839



Figure 4: Extract from Hertfordshire XLIV.4 OS map; revised 1896; published 1898



Figure 5: Extract from Hertfordshire XLIV.4 OS map; revised 1912; published 1914



Figure 6: Extract from Hertfordshire XLIV.4 OS map; revised 1934; published 1936



Figure 7: Extract from the tithe apportionment map: Aldenham in the County of Hertford, 1839



Figure 8: Extract from Hertfordshire XLIV.4 OS map; revised 1896; published 1898



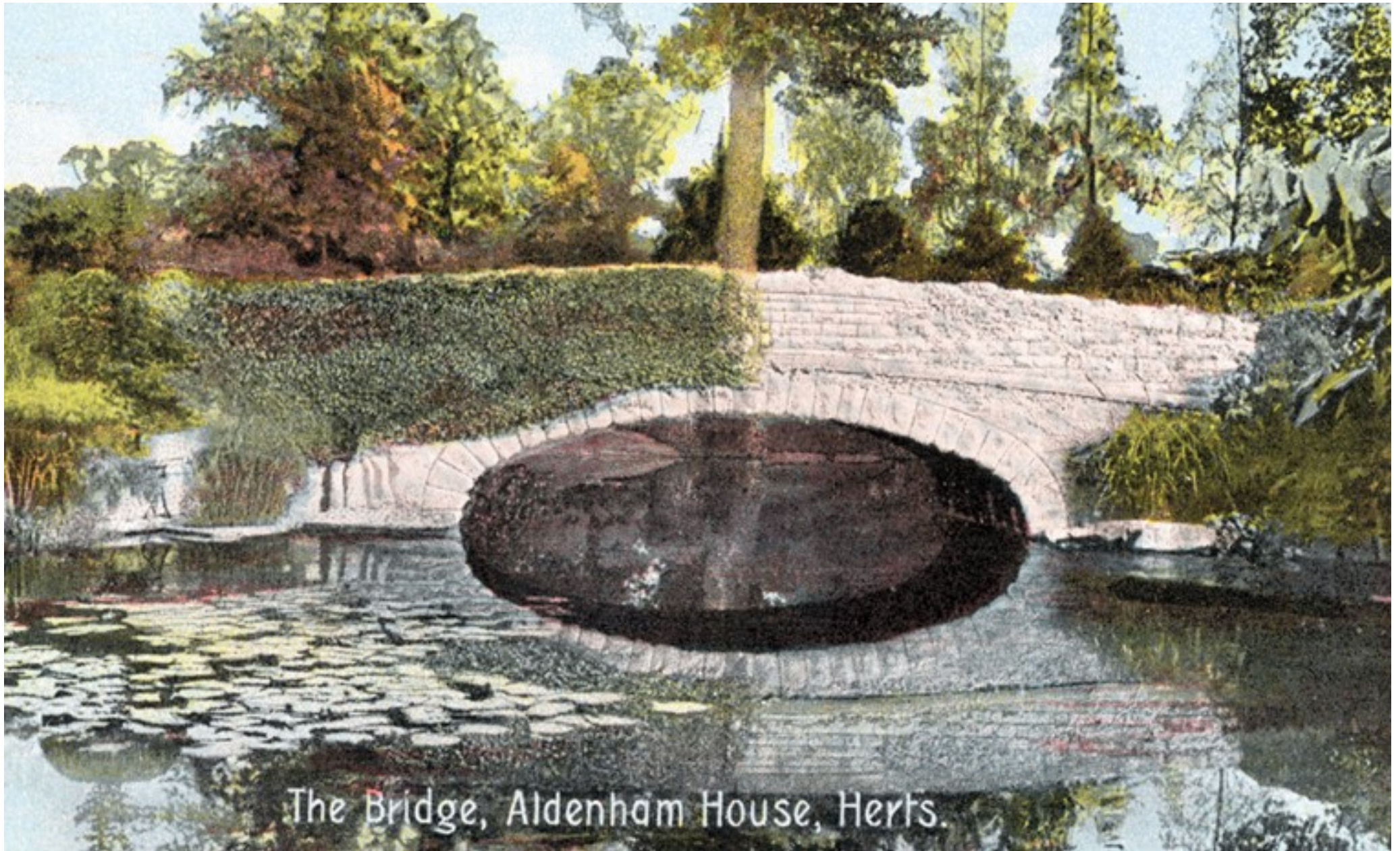
Figure 9: Extract from Hertfordshire XLIV.4 OS map; revised 1912; published 1914



Figure 10: Extract from Hertfordshire XLIV.4 OS map; revised 1934; published 1936



Figure 11: Photograph of Aldenham House, undated
<http://www.hertfordshire-genealogy.co.uk/data/places/places-a/aldenham/aldenham-aldenham-house.htm>



The Bridge, Aldenham House, Herts.

Figure 12: Painting of 'The Bridge, Aldenham House', undated
<http://www.hertfordshire-genealogy.co.uk/data/places/places-a/aldenham/aldenham-aldenham-house.htm>



10. NORTH-WEST GATES, ALDENHAM HOUSE.

Figure 13: Image of the north-west gates at Aldenham House, undated
<http://www.hertfordshire-genealogy.co.uk/data/places/places-a/aldenham/aldenham-aldenham-house.htm>



Figure 14: Aerial photograph of the 'BBC Overseas Broadcasting Service at Aldenham House and Grounds, Aldenham, 1946' (Britain from Above; EAW002187)



Figure 15: Aerial photograph of Aldenham Reservoir and environs, Elstree, from the south, 1937 (Britain from Above; EPW053034. Note: the park is depicted beyond the reservoir.

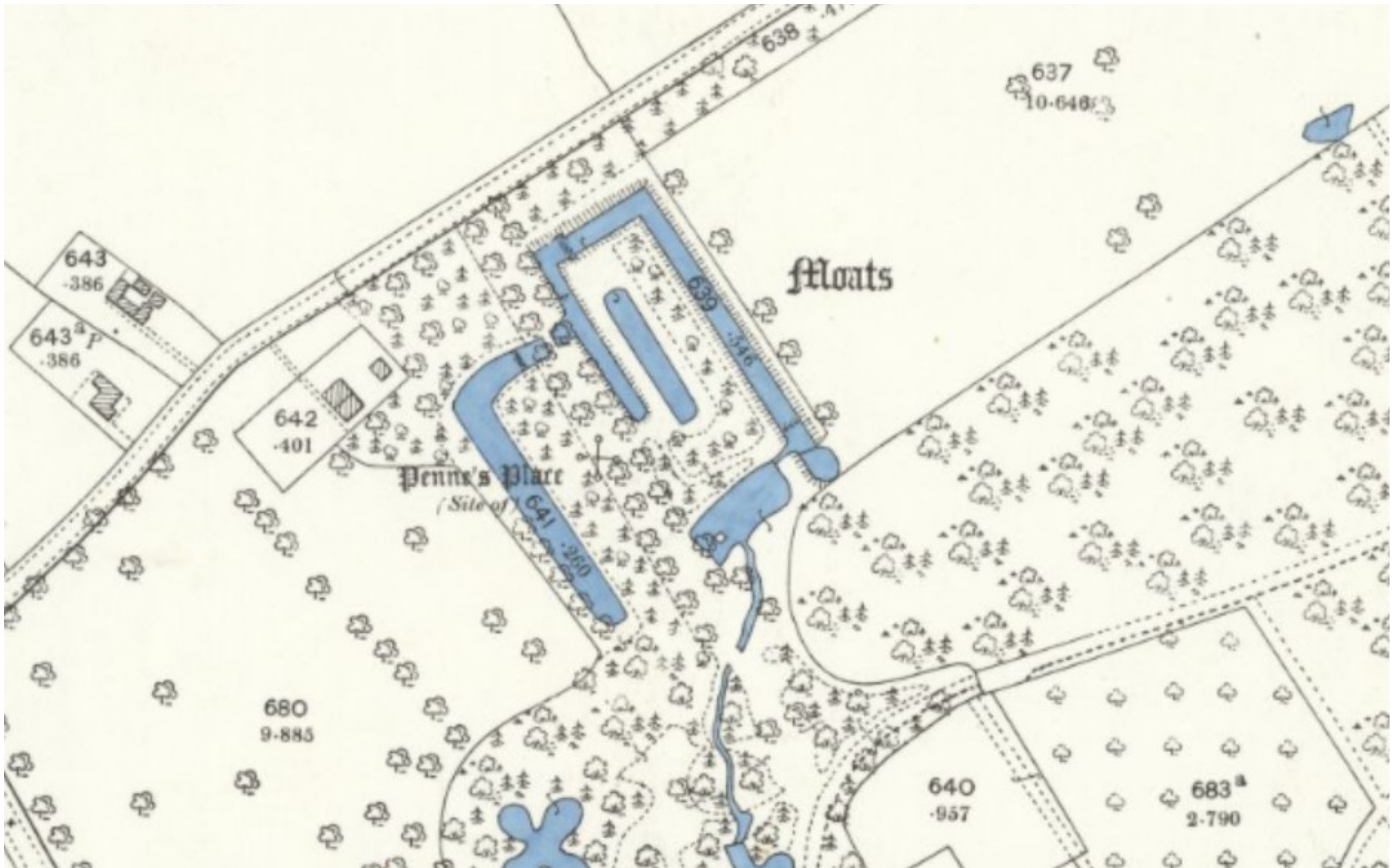


Figure 16: Extract from Hertfordshire XLIV.4 OS map; revised 1896; published 1898

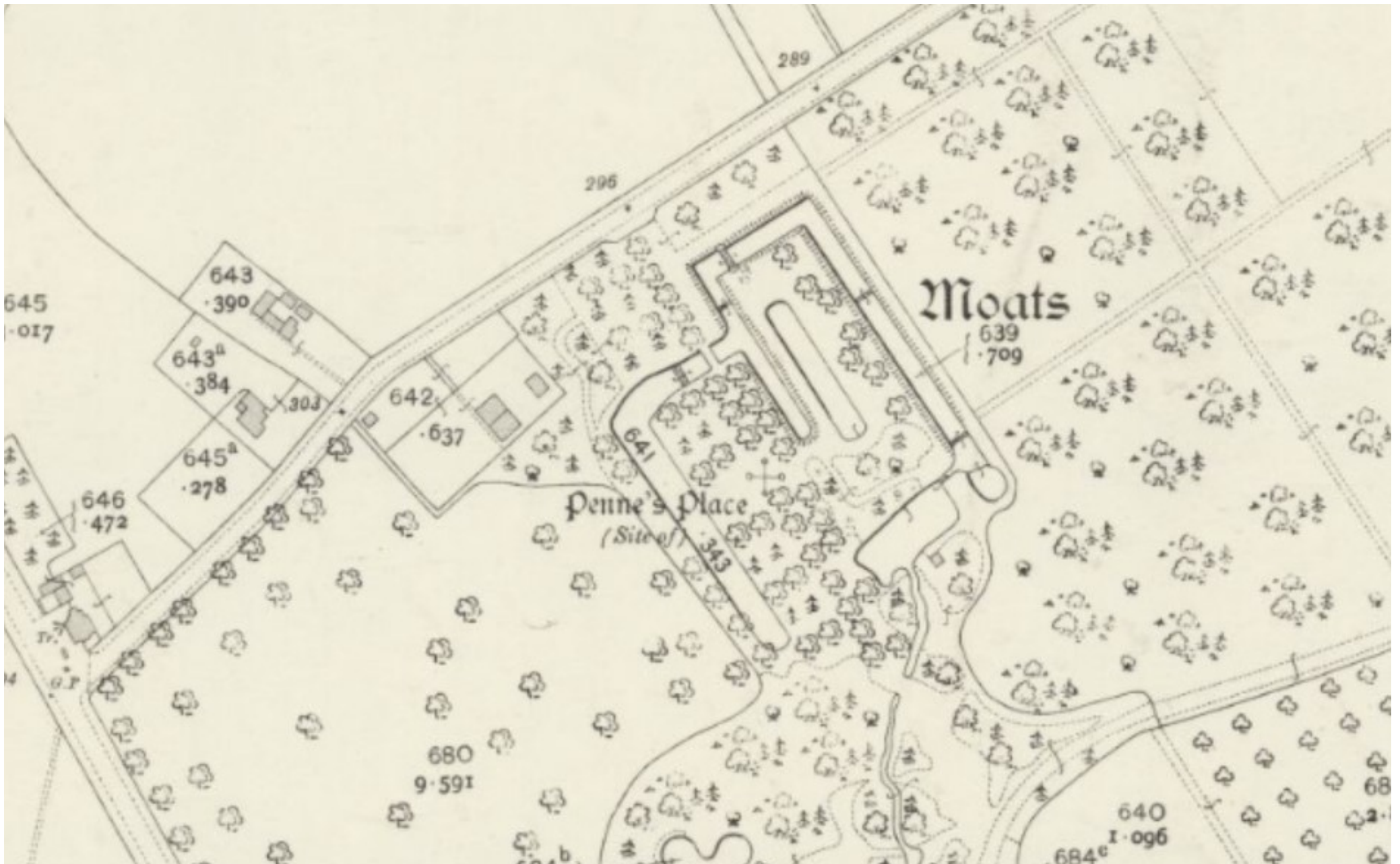


Figure 17: Extract from Hertfordshire XLIV.4 OS map; revised 1912; published 1914

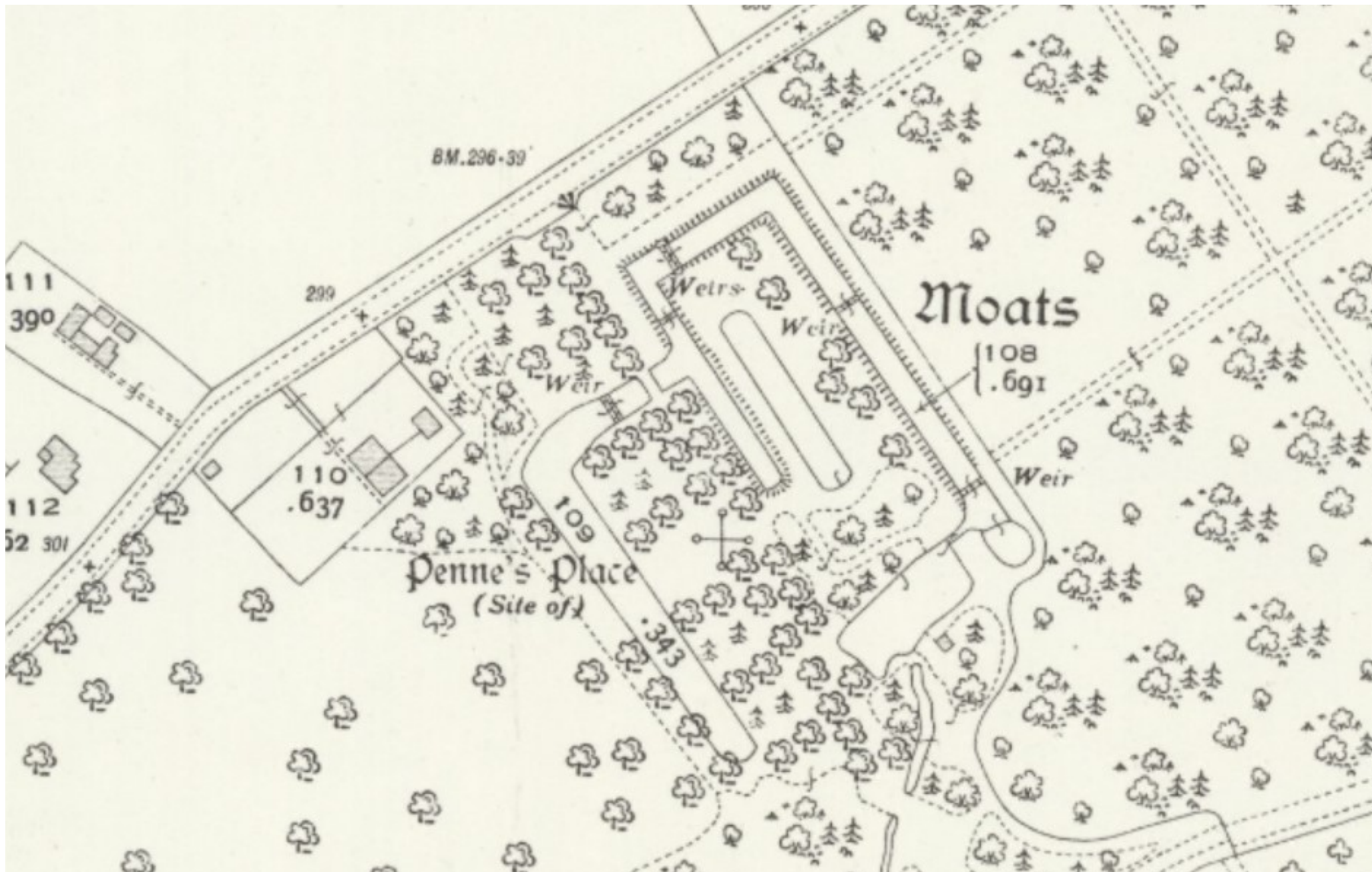


Figure 18: Extract from Hertfordshire XLIV.4 OS map; revised 1934; published 1936



Figure 19: Historic England Asset Mapping, Penne's Place;

<https://historicengland.org.uk/listing/the-list/list-entry/1013001?section=official-list-entry>



Figure 20: Extract from the tithe apportionment map: Aldenham in the County of Hertford, 1839



Figure 21: Extract from Middlesex V.NE OS map; revised 1895; published 1899

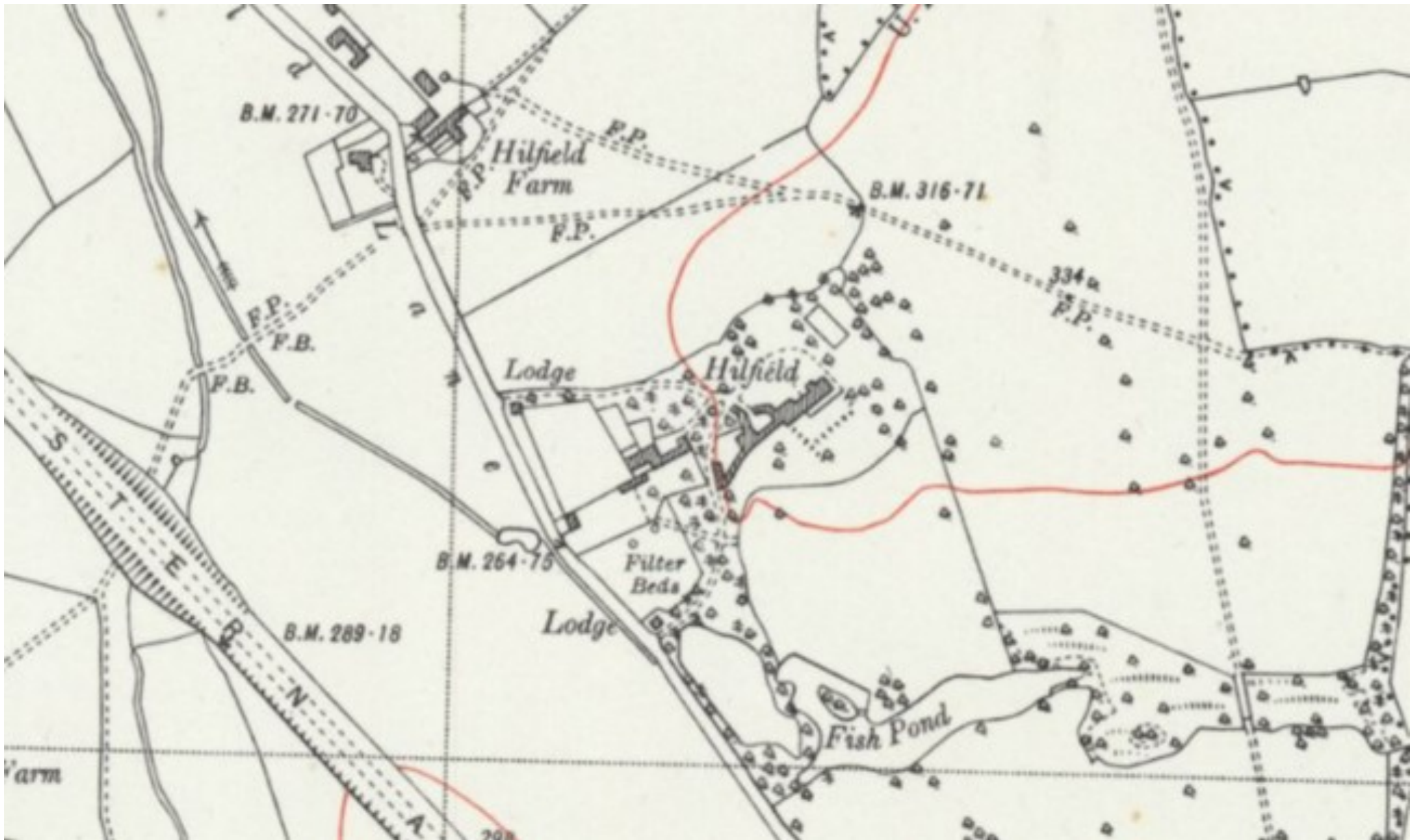


Figure 22: Extract from Hertfordshire XLIV OS map; revised 1938; published ca. 1946



Figure 23: A design for the south front of Hilfield Castle, undated



Figure 24: A design for the east front of Hilfield Castle, undated



Figure 25: Aerial photograph of 'Hilfield Castle and surrounding countryside, Bushey, from the south, 1949' (Britain from Above; EAWo23652)



Figure 26: Aerial photograph of the 'Construction of the Hillfield Park Reservoir, Bushey Heath, 1952' (Britain from Above; EAW045342)



Figure 27: Aerial photograph of the 'Construction of the Hillfield Park Reservoir, Bushey Heath, 1952' (Britain from Above; EAWo48862)



Figure 28: Photograph of the view towards Field 1 with Hilfield Lodge to right of picture (late C20)



Figure 29: Photograph of the view towards Field 1 with Hilfield Lodge to right of picture (late C20)



Figure 30: Photograph of the view towards Field 1 from the garden of Hilfield Lodge (late C20)