



Hertsmere Community Safety Partnership (CSP) Partnership Plan 2023 - 2027



Large print and languages

Hertsmere Borough Council aims to provide information in alternative formats where possible.

If you would like a document in a different language or format please call 020 8207 7445 or email customer.services@hertsmere.gov.uk and we will do our best to help.

Please allow sufficient time for any document to be translated.

تهدف بلدية منطقة هارتسمير (Hertsmere Borough Council) إلى توفير المعلومات بصيغ بديلة إذا كان ذلك ممكناً.

إذا أردت أي وثيقة بلغة أو بصيغة أخرى يرجى الاتصال برقم الهاتف 020 8207 7445 أو إرسال بريد إلكتروني customer.services@hertsmere.gov.uk وسنبدل قصارى جهدا لمساعدتك. يرجى منحنا وقتاً كافياً لترجمة أي وثيقة مطلوبة.

Hertsmere 自治区政府旨在可能的情况下提供信息的其它格式版本。

如果你想得到以简体中文或其它格式制作的版本，请致电 020 8207 7445，或发送邮件至 customer.services@hertsmere.gov.uk，我们将尽力提供帮助。请预留足够的时间，以便让我们完成有关文件的翻译。

Rada miejska Hertsmere Borough Council zamierza dostarczać wszelkie informacje, tam gdzie jest to możliwe, w różnych formatach.

Jeżeli ktoś chciałby otrzymać dokument w innym języku lub formacie proszony jest zatelefonować na numer 020 8207 7445 lub przesłać e-mail do customer.services@hertsmere.gov.uk a my zrobimy wszystko by pomóc. Prosimy uwzględnić czas na przetłumaczenie każdego dokumentu.

ਹਰਟਸਮੀਅਰ ਥੇਰੇ ਕੌਂਸਿਲ ਜ਼ਿਥੇ ਵੀ ਹੋ ਸਕੇ, ਜਾਣਕਾਰੀ ਹੋਰ ਰੂਪਾਂ ਵਿਚ ਦੇਣ ਦਾ ਯਤਨ ਕਰਦੀ ਹੈ।

ਜੇ ਕੁਹਾਨੂੰ ਕੋਈ ਦਸਤਾਵੇਜ਼ ਕਿਸੇ ਹੋਰ ਬੋਲੀ ਵਿਚ, ਜਾਂ ਕਿਸੇ ਹੋਰ ਰੂਪ ਵਿਚ ਚਾਹੀਦਾ ਹੈ, ਤਾਂ ਕਿਰਪਾ ਕਰਕੇ ਨੰਬਰ 020 8207 7445 'ਤੇ ਫ਼ਨ ਕਰ, ਜਾਂ ਇਸ ਪਤ customer.services@hertsmere.gov.uk 'ਤੇ ਈਮੇਲ ਭੇਜੋ। ਅਸੀਂ ਕੁਹਾਡੀ ਮਦਦ ਕਰਨ ਦੀ ਪੂਰੀ ਕੋਸ਼ਿਸ਼ ਕਰਾਂਗੇ। ਕਿਰਪਾ ਕਰਕੇ ਇਹ ਯਾਦ ਰੱਖੋ ਕਿ ਦਸਤਾਵੇਜ਼ ਦਾ ਤਰਜਮਾ ਹੋਣ ਨੂੰ ਕੁਝ ਸਮਾਂ ਲਗਦਾ ਹੈ।

Hertsmere Borough Council
Civic Offices, Elstree Way
Borehamwood, Herts WD6 1WA

Tel: 020 8207 2277
Website: www.hertsmere.gov.uk

Produced by Hertsmere Design and Print Services

Tel: 020 8207 7416

Email: design@hertsmere.gov.uk

Contents

02 Foreword

03 Hertsmere Community
Safety Partnership

05 What does the Strategic
Assessment tell us?

07 Aims 2023 -2027

08 Priorities 2023 - 2024

10 Partnership
achievements

12 Crime glossary

13 Useful contact details

Foreword



One of our key priorities is to ensure that people feel safe in their communities.

Hertsmere Community Safety Partnership (CSP) brings together statutory and voluntary organisations to address concerns about crime and anti-social behaviour.

There is never any complacency about the challenge. Through the partnership much progress has been achieved to raise awareness and deliver a coordinated approach, but we strive to continue to produce targeted action that reduces incidents of crime and anti-social behaviour.

The Partnership Plan 2023–2027 has been produced following consultation with local communities and partner agencies to provide an overview of the role of the CSP, crime trends, our strategic aims and priorities for the next four years, as well as a summary of the partnerships achievements. To ensure we meet the needs of our communities, we will regularly review this plan to make sure it continues to reflect our borough's needs and meet new or emerging issues.

By working in partnership, we believe that residents will feel a sense of confidence that Hertsmere is a place where people can live, work and visit safely.

Cllr Christian Grey
Portfolio Holder for Communities, Neighbourhoods, Enforcement, Economic Development and Transformation





Hertsmere Community Safety Partnership

Hertsmere Community Safety Partnership (CSP) is a strategic partnership, working to reduce crime and offending in accordance with the Crime and Disorder Act 1998; Police Reform and Social Responsibility Act 2011; the Anti-Social Behaviour, Crime and Policing Act 2014 and the Police, Crime, Sentencing and Courts Act 2022.

The CSP is made up of representatives who work closely to develop innovative ways to tackle crime, disorder and anti-social behaviour to create safer communities in Hertsmere.

Hertsmere CSP representatives:



Delivery, Monitoring and Measuring

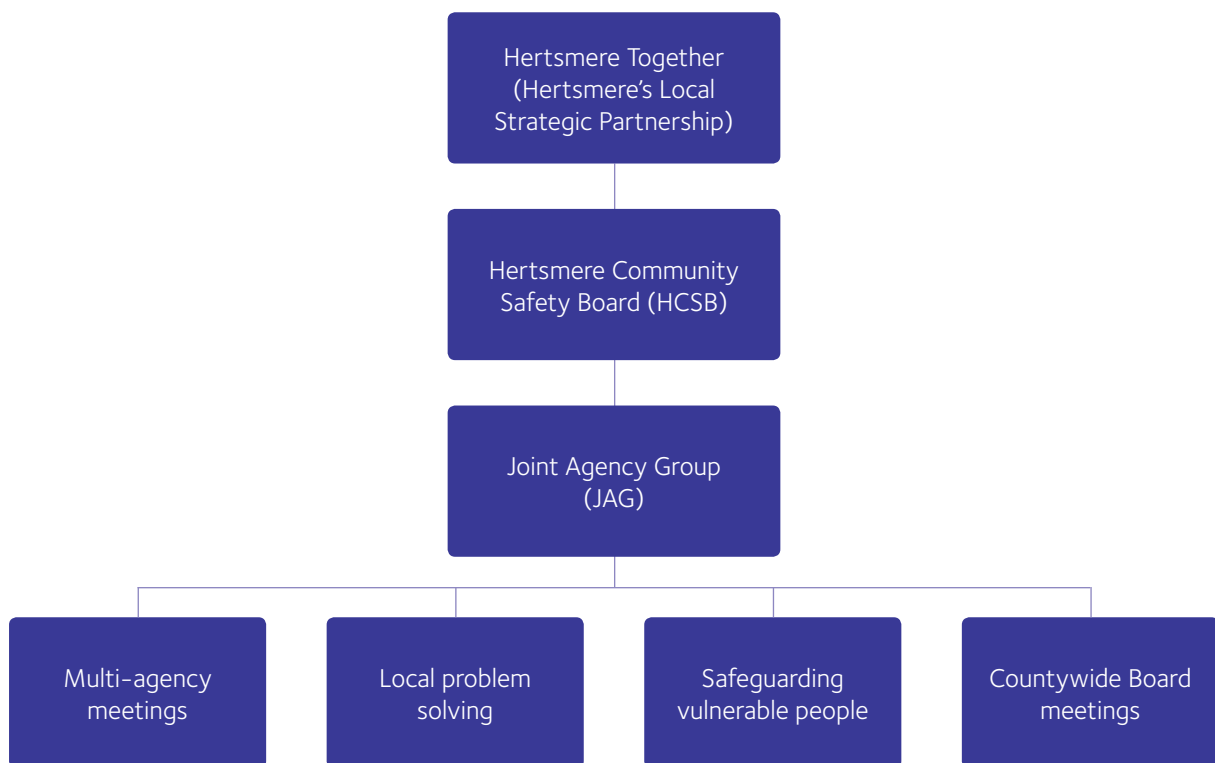
Partnership working is key to delivering against the aims of the CSP. The partnership has to really understand the causes of what is happening, where it is happening and why it is happening to ensure that the right initiatives are implemented to tackle issues, as well as reduce crime and anti-social behaviour.

The CSP consistently monitors crime trends, which are reported to Hertsmere Together on a regular basis. This enables them to oversee the actions, outcomes and performance of the CSP.

Hertsmere Community Safety Board is made up of representatives from the Responsible Authorities and this board manages the operational performance of the CSP and signs off the Partnership Plan and annual action plan.

The Joint Agency Group (JAG) is the multi-agency tasking and co-ordinating delivery arm of the CSP where much of the core work is undertaken. This group directs partnership activity at a tactical level to solve current and emerging local problems.

Below JAG there are a number of sub-groups that problem-solve issues such as anti-social behaviour, vulnerable people, domestic abuse, local priorities, hoarding, youth violence and safeguarding. The council's Community Safety Team also represent the CSP at countywide boards and meetings such as Prevent, Multi-Agency Child Exploitation Panel (MACE), Modern Slavery, Domestic Abuse, Office of the Police and Crime Commissioner (OPCC), Domestic Homicide Review (DHR), Eastern Region Special Operations Unit (ERSOU), Counter Terrorism, Anti-Social Behaviour Forum, CCTV, Safetynet+ Governance.





What does our Strategic Assessment 2022 tell us?

Each year a county-wide Strategic Assessment is carried out by Hertfordshire County Council's Community Safety Unit to assist the CSP to identify its priorities and emerging issues. This assessment highlights issues that are currently affecting the county and where focus should be on a county-wide scale. It also identifies the key areas of concern for each of the ten CSPs in Hertfordshire.

Hertsmere had an all crime reduction of 0.8% in 2022

Hertsmere crime figures for January – December 2022 compared to the same period in 2021

All crime 7002 offences, 54 less -0.8%
Anti-social behaviour 2262 incidents, 319 less -12.4%
Assault with injury 646 offences, 13 less -2%
Burglary business & community 118 offences, 21 less -15.1%
Domestic abuse (crime) 931 offences, 57 less -5.8%
Domestic abuse non-crime 728 offences, 48 less -6.2%
Drug possession 195 offences, 17 less -8%
Drug trafficking 24 offences, same as last year
Rape 34 offences, 3 less -8.1%
Stalking and harassment 451 offences, 87 less -16.2%
Theft person 65 offences, 1 less -1.5%
Theft shop 573 offences, 86 less -13.1%
Violence against a person 2125 offences, 109 less -4.9%

Crime decrease

Crime increase	
Assaults without injury 925 offences, 12 more 1.3%	
Residential burglary 295 offences, 14 more 5%	
Criminal damage 722 offences, 65 more 9.9%	
Hate Crime 186 offences, 2 more 1.1%	
Make off without payment 389 offences, 53 more 15.8%	
Robbery 67 offences, 16 more 31.4%	
Serious sexual offences 94 offences, 2 more 2.2%	
Theft from motor vehicle 549 offences, 10 more 1.9%	
Theft of motor vehicle 245 offences, 40 more 19.5%	
Theft other 1169 offences, 211 more 22%	

See crime glossary on page 12 for an explanation of each crime type.



Partnership priorities 2023 – 2024

1. Support and protect vulnerable victims of exploitation;
2. Identify and prevent serious violence, with a specific focus on knife crime and young people;
3. Prevent Violence Against Women and Girls (VAWG);
4. Work in partnership to support and promote local services that provide a holistic approach to community wellbeing;
5. To reduce the harm caused by drugs within communities;
6. Increase feelings of safety and public confidence by reducing anti-social behaviour, providing early interventions and reassurance messages and robustly tackling crime.

Over 90% of respondents thought priorities 1, 2, 3, 5 and 6 were relevant and just under 20% of respondents didn't think priority 4 was relevant.

Respondents were asked what more the partnership could do to address the priorities and whether there were any other areas that should be considered. There were over 400 responses, which have been grouped into the themes below:

Anti-social behaviour	Health
Communication	Safeguarding
Education	Violent crime
Road safety	Community engagement
Support	Early intervention
Young people	Police presence
CCTV	Street lighting
Crime prevention	Tackling crime

Consultation Summary

In total 329 people completed the survey which ran for six weeks from January 2023. The survey was publicised via various channels including being sent to all partner agencies with a media pack and press release for them to encourage their colleagues who live and work in Hertsmere to complete the survey, as well as their service users.

Partnership aims 2023 – 2027

- To create safer environments by tackling crime and anti-social behaviour;
- To protect and safeguard vulnerable people;
- To build community confidence and wellbeing to increase feelings of safety.

Over 95% of respondents agreed that each of the three aims were relevant and over 100 people provided additional comments on what they wanted the partnership to consider.





Following extensive public consultation the CSP has used the strategic assessment, crime trends, data sources, intelligence and results from the Feelings of Safety

survey to agree these partnership aims for the next four years:

To create safer environments by tackling crime and anti-social behaviour (ASB)

To protect and safeguard vulnerable people

To build community confidence and wellbeing to increase feelings of safety





Priorities 2023 – 2024

Each year the partnership refreshes its action plan to confirm it's focusing on the right priorities to ensure the overall aims are being addressed. The partnership

priorities for 2023 – 2024 are listed below, along with the work we will do:

Priority 1 Support and protect vulnerable victims of exploitation*

What we will do:

- Proactively identify victims of exploitation, offer support and regularly review their risk.
- Work with schools to deliver educational events to students, professionals and the wider community to help spot the signs of exploitation.
- Work with the Office of the Police and Crime Commissioner (OPCC) and Hertfordshire County Council's Community Safety Unit (HCC CSU) to develop a standardised approach to dealing with cuckooing** and to provide training for professionals.
- Provide a police presence to engage with communities to help understand the local concerns and share intelligence to protect vulnerable victims of exploitation.

*Exploitation is the act of selfishly taking advantage of someone or a group of people in order to profit from them or otherwise benefit oneself. Examples of this include child criminal / sexual exploitation, modern slavery and cuckooing**

**Cuckooing is when criminals target the home of a vulnerable person, often so they can use the property for criminal purposes, such as drug dealing and hiding weapons.

Priority 2 Identify and prevent serious violence, with a specific focus on knife crime and young people

What we will do:

- Proactively identify those involved in serious violence and provide alternative diversions to prevent further incidents from occurring.
- Provide opportunities for people to surrender illegal knives and regularly look for knives that may have been left in hedges and bushes in hotspot areas.
- Work with the OPCC and HCC CSU to look at local data and understand how Hertsmere is affected by serious violence.
- Provide a police presence in hotspot areas and effectively use powers, such as Stop & Search, to prevent incidents of serious violence and reassure communities.
- Deliver educational workshops in schools to raise awareness of knife crime and the devastating impact it can have on communities.

Priority 3 Prevent Violence Against Women and Girls (VAWG**)

What we will do:

- Provide information, advice and awareness of VAWG, along with details of how to report incidents.
- Provide reassurance messages.
- Deliver educational sessions in primary and secondary schools.
- Deliver awareness and safety workshops in communities to help people stay safe.
- Liaise with Hertfordshire County Council, who has responsibility for street lighting, on areas identified within the borough that may benefit from increased lighting.

***VAWG is any form of violence disproportionately perpetrated by men against women and girls

Priority 4 Work in partnership to support and promote local services that provide a holistic approach to community wellbeing

What we will do:

- Encourage increased reporting of domestic abuse.
- Raise awareness of the support services available for those affected by domestic abuse, mental ill-health, drugs and alcohol misuse, and the cost of living crisis.
- Build the partnerships directory of local services and promote these in the community.

Priority 5 To reduce the harm caused by drugs within communities

What we will do:

- Run operations to proactively pursue individuals who are involved in exploitation and drug dealing.
- Work in partnership to address cannabis use in residential properties.
- Actively patrol hotspot areas, effectively use powers, such as Stop & Search, and robustly deal with those who use and supply drugs.
- Deliver educational workshops in schools to raise awareness of drugs and the impact they can have in communities.

Priority 6 Increase feelings of safety and public confidence by reducing anti-social behaviour, robustly tackling crime and providing early interventions and reassurance messages

What we will do:

- Engagement events to provide crime prevention advice, information on wellbeing and an opportunity for the community to discuss their concerns.
- Proactively patrol hotspot areas, engage with young people involved in anti-social behaviour and provide positive alternatives to prevent further incidents.
- Publicise good news stories and provide reassurance messages.
- Continually review locations for CCTV and deploy mobile CCTV cameras in crime and anti-social behaviour hotspots to identify offenders and take appropriate action.
- Liaise with Hertfordshire County Council, who has responsibility for street lighting, on areas identified within the borough that may benefit from increased lighting
- Communicate crime prevention advice on home protection, personal safety and vehicle safety.
- Encourage residents and businesses to join Neighbourhood Watches.
- Proactively patrol anti-social behaviour and burglary hotspots and provide timely crime prevention advice.



Partnership Achievements 2022 – 2023

To create safer environments by tackling crime and anti-social behaviour

Anti-Social Behaviour

When anti-social behaviour is affecting residents we need to ascertain who is responsible. To enable us to take the necessary action, we send out anti-social behaviour surveys to residents in the local area. The letters provide contact details for residents to report any future incidents and the survey offers them an opportunity to share details of what they are experiencing, who is responsible and how it is affecting them, which they can complete anonymously if they want to. This enables us to gather intelligence and provide a co-ordinated response, from environmental enhancements to installing the mobile CCTV cameras at hotspot locations on a temporary basis. In 2022–2023 we sent out anti-social behaviour letters and surveys to residents in 26 roads in Hertsmere.

Closed Circuit Television (CCTV)

In 2022 the council installed two new cameras and upgraded eight static cameras in Borehamwood utilising the Home Office's Safer Streets fund. The remaining cameras in the borough are being upgraded in 2023.

The CSP has eight mobile cameras that can be deployed in anti-social behaviour and crime hotspots on a temporary basis for up to three months. The footage recorded can help to identify the perpetrators of anti-social behaviour, as well as gather intelligence and evidence so the necessary action can be taken to prevent the behaviour from continuing. Before a mobile

camera is deployed we consult with residents in the vicinity to let them know why we are considering using a camera and to offer them an opportunity to discuss and share details of what they are experiencing. In 2022–2023 the mobile cameras were deployed in nine hotspot locations in the borough.

The cameras are monitored by Hertfordshire CCTV Partnership 24 hours a day, seven days a week.

Community Triggers

The Community Trigger, also known as the Anti-Social Behaviour Case Review, is a statutory provision introduced in the Anti-Social Behaviour Crime and Policing Act 2014. It is a safety net for victims of anti-social behaviour. The Community Trigger is available to victims of serious and persistent anti-social behaviour, where they feel no effective action has been taken to resolve their case. In 2022–2023 we received one request for a case review, which met the threshold. As part of this case review several multi-agency meetings were held, with an independent chair who has not had any dealings with the case and recommendations were made to improve the situation.

Choices and Consequences

Choices and Consequences events are aimed at students in the last year of primary school before they transition to secondary school. The students attend a number of workshops where they discuss topics such as staying safe, the harsh reality of knife crime, grooming, exploitation, the impact of crime, online safety, emotional wellbeing and coping strategies. The aim of these workshops is to prevent anti-social behaviour and empower young people to make positive choices.



To build community confidence and wellbeing to increase feelings of safety

Older Persons Activity Learning and Safety (OPALS)

OPALS is a free event for Hertsmere residents aged 60 or over where they learn how to stay safe inside and outside their home and how to remain healthy and well. OPALS events are organised by Hertfordshire Fire and Rescue Service and include information and advice from a range of services including Hertfordshire Constabulary, Hertfordshire Trading Standards and Hertsmere Borough Council. Free refreshments including a hot meal are provided at the events by Herts Independent Living. During 2022 – 2023 four OPALS were held in the borough with approximately 170 residents attending and receiving information and advice.

Visual audits and community engagements

In the past year the partnership has co-ordinated a number of visual audits and community engagements in hotspot areas. During the visual audits partner agencies speak with residents to understand the issues they are experiencing and they agree actions to improve the environment to prevent further incidents of anti-social behaviour and crime. Residents are given crime prevention advice and are encouraged to sign up to the Online Watch Link (OWL). OWL keeps communities safe, helps reduce crime and keeps people informed of what's going on locally.

To protect and safeguard vulnerable people

South West Herts Youth Action Panel (SWHYAP)

The SWHYAP has been set up in conjunction with Hertsmere, Three Rivers and Watford Community Safety Partnerships. The role of the panel is to identify young people who are involved, or are at risk of becoming involved, in criminal gangs, serious youth violence and related offending. The young people identified are allocated a No More Worker, who is hosted by Stevenage Borough Council. They work with the young person, their parents/carers and other agencies to help them make positive choices. Several young people from Hertsmere have been referred to the panel and have received support from the No More Worker. Due to the success of the project funding has been secured to continue the delivery of this work in 2023-2024.

Multi-Agency Risk Reduction Group (MARRG) meetings

The council's Community Safety Team co-ordinates regular multi-agency meetings where people who are involved in or at risk of becoming involved in anti-social behaviour or crime, either as a perpetrator or victim are discussed. The aim of these meetings is to ensure the relevant agencies are taking appropriate action, where necessary, to prevent further offending and to safeguard and support our most vulnerable.

MARRG is held monthly and attended by representatives from Hertsmere Borough Council, Hertfordshire Constabulary, Hertfordshire Fire and Rescue Service, a number of housing associations, Herts Mind Network, Intensive Family Support Teams, Specialist Adolescent Service Hertfordshire, Adult Care Services, Beacon (victim support) and mental health services.



Crime glossary

All crime – includes all crime listed below.

Anti-social behaviour – this is a range of behaviours that can cause nuisance and annoyance or harm and distress to a person.

Assault with injury – assaults which result in harm / injury to a person.

Assaults without injury – assaults which result in no injury to a person.

Burglary business and community – a person enters a building that is used for commercial means as a trespasser and steals or attempts to steal.

Residential burglary – a person commits burglary if they enter any building or part of a building as a trespasser and, having done so, steal or attempt to steal anything.

Criminal damage – when someone unlawfully, and intentionally or recklessly damages or destroys property belonging to another. This can also include arson and threats to cause damage.

Domestic abuse crime – a domestic incident where a criminal offence has been committed.

Domestic abuse non crime – a domestic incident where no criminal offences have been committed.

Drug possession – being caught with drugs on you, no matter who they belong to.

Drug trafficking – the crime of selling, transporting or illegally importing unlawful controlled substances.

Hate crime – this includes offences that are either motivated, or perceived to be motivated, by hostility towards one of the five monitored hate strands: race/ethnicity, faith/religion, sexual orientation, transgender and disability. A single offence can involve multiple hate strands.

Make off without payment – not paying for petrol or diesel.

Rape – when a person does not want to have sex or does not give their consent to have sex.

Robbery – involves the use or threat of force in order to steal or attempt to steal from a person or business.

Serious sexual offences – when someone touches another person without their consent, or when someone makes another person take part in a sexual activity with them without that person's consent.

Stalking and harassment – these involve persistent, unwanted contact and/or communication with the intent to cause victims alarm/distress, anxiety and/or a fear of violence. Such offences can have a severe impact on victims and may result in them taking significant measures to avoid contact, such as moving house or changing their job.

Theft from motor vehicle – when something is stolen from a vehicle.

Theft of motor vehicle – when a vehicle is stolen.

Theft other – items stolen that were not on a person.

Theft person – stealing something from a person without the use of force.

Theft shop – stealing items from a shop.

Violence against a person – this includes a number of offences usually involving the use or threat of physical and emotional harm against individuals. This includes homicide, physical assault, stalking and harassment and coercive/controlling behaviour.

Useful contact details

Citizens Advice

- ✉ elstreeadvice@hertsmerecab.org.uk
- ☎ Adviceline (England) 03444 111 444
Citizens Advice consumer helpline 0808 223 1133
- 🌐 www.citizensadvice.org.uk/local/hertsmere

Crimestoppers

- ☎ 0800 555 111
- 🌐 www.crimestoppers-uk.org

Hertfordshire Police

- ☎ Non-emergency number 101
or 999 in an emergency
- 🌐 Website: www.herts.police.uk

Hertfordshire Fire and Rescue Service

- Borehamwood Fire Station
☎ 020 8258 1100
- Potters Bar Fire Station
☎ 01707 346 100
- 🌐 www.hertfordshire.gov.uk/fire

Herts Help

- ✉ info@hertshelp.net
- ☎ 0300 123 00444
- 🌐 www.hertshelp.net

Hertsmere Borough Council

- ☎ 020 8207 2277
- 🌐 www.hertsmere.gov.uk

Hertsmere Community Safety Partnership

- ✉ partnership.support@hertsmere.gov.uk
- ☎ 020 8207 2277
- 🌐 www.hertsmere.gov.uk/csp

Hertfordshire Beacon

- ✉ info@hertfordshirebeacon.org
- ☎ 0300 0115 555 option3
- 🌐 www.hertfordshirebeacon.org

Hertfordshire Domestic Abuse Helpline

- ✉ kim@mailpurple.org
- ☎ 08 088 088 088
- 🌐 www.hertssunflower.org

Police and Crime Commissioner for Hertfordshire

- ✉ commissioner@herts-pcc.gov.uk
- ☎ 01707 806 100
- 🌐 www.hertscommissioner.org

OWL Online Watch Link

- ✉ WLO@herts.police.uk
- 🌐 www.owl.co.uk/herts



