



Hertsmere

District



This profile was produced on 8 July 2014

Health Profile 2014

Health in summary

The health of people in Hertsmere is generally better than the England average. Deprivation is lower than average, however about 14.0% (2,800) children live in poverty. Life expectancy for men is higher than the England average.

Living longer

Life expectancy is 7.7 years lower for men in the most deprived areas of Hertsmere than in the least deprived areas.

Child health

In Year 6, 15.4% (126) of children are classified as obese, better than the average for England. The rate of alcohol-specific hospital stays among those under 18 was 36.3*. This represents 8 stays per year. Levels of teenage pregnancy, GCSE attainment, breastfeeding and smoking at time of delivery are better than the England average.

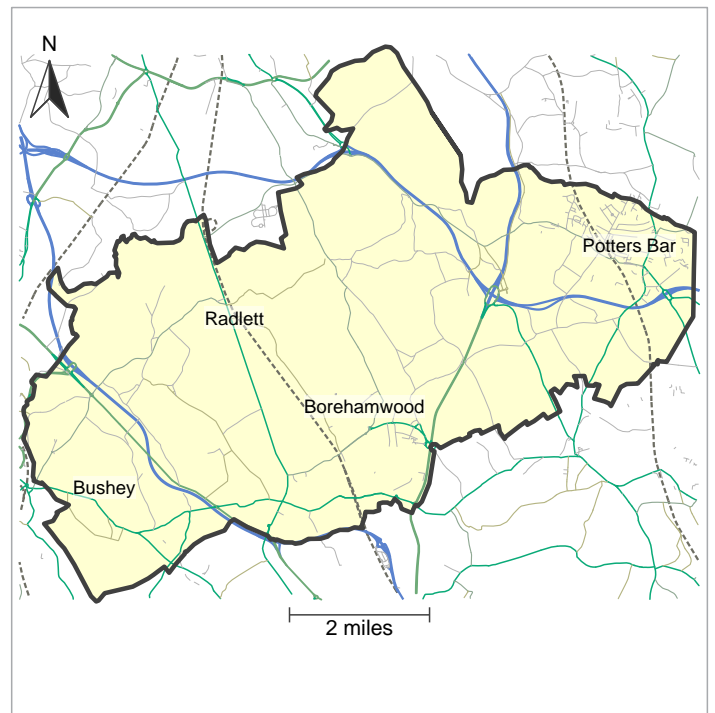
Adult health

In 2012, 20.2% of adults are classified as obese. The rate of alcohol related harm hospital stays was 512*, better than the average for England. This represents 489 stays per year. The rate of self-harm hospital stays was 113.2*, better than the average for England. This represents 114 stays per year. The rate of smoking related deaths was 259*, better than the average for England. This represents 143 deaths per year. Rates of hip fractures and people killed and seriously injured on roads are worse than average. The rate of sexually transmitted infections is better than average. Rates of statutory homelessness, violent crime, long term unemployment, new cases of malignant melanoma and drug misuse are better than average.

Local priorities

Priorities in Hertsmere include promoting a healthy weight and physical activity; improving mental health and emotional wellbeing; creating a healthy culture across all services, communities and workplaces. For more information see Health and Wellbeing at www.hertsmere.gov.uk

* rate per 100,000 population



© Crown Copyright and database rights 2014, Ordnance Survey 100016969
OpenStreetMap contributors ODbL

Population: 101,000

Mid-2012 population estimate. Source: Office for National Statistics.

This profile gives a picture of people's health in Hertsmere. It is designed to help local government and health services understand their community's needs, so that they can work to improve people's health and reduce health inequalities.

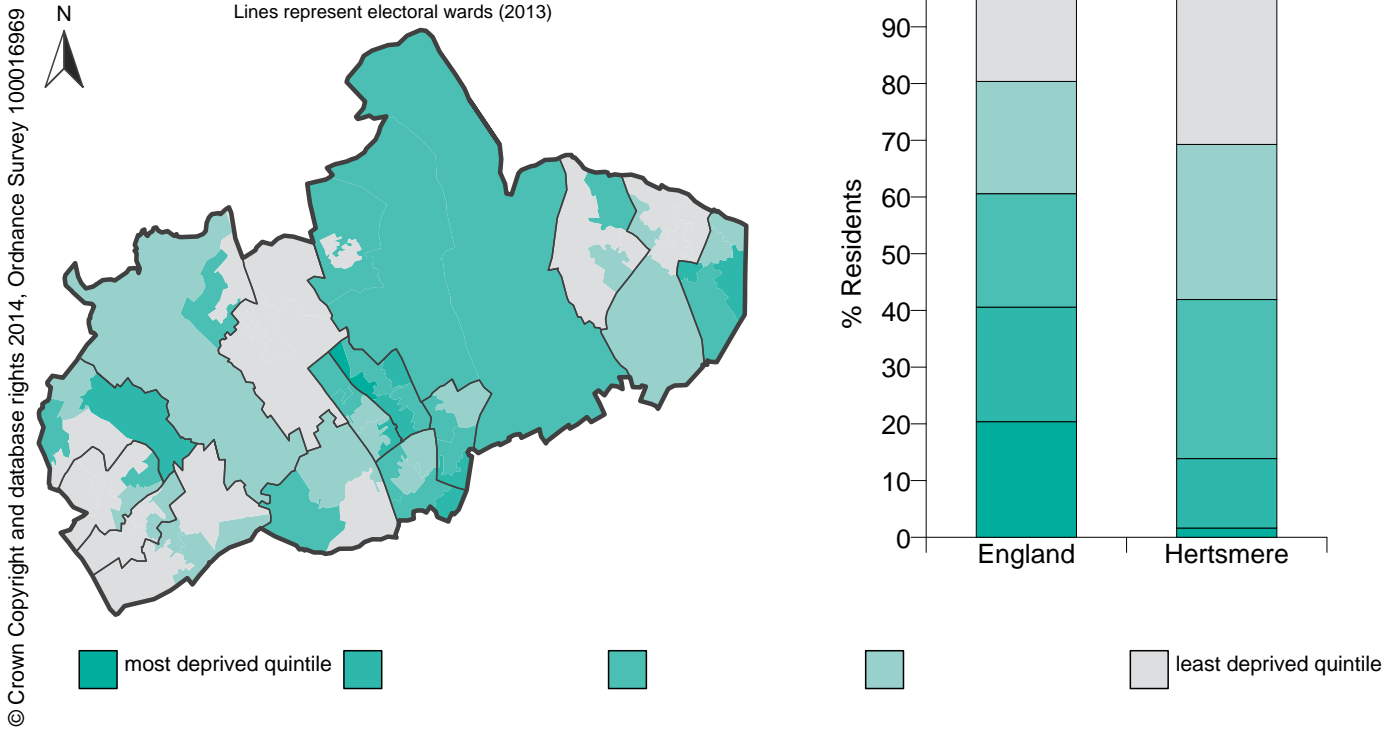
Visit www.healthprofiles.info
or scan this Quick Response code:
for more profiles, more information
and interactive maps and tools.



Follow [@healthprofiles](https://twitter.com/healthprofiles) on Twitter

Deprivation: a national view

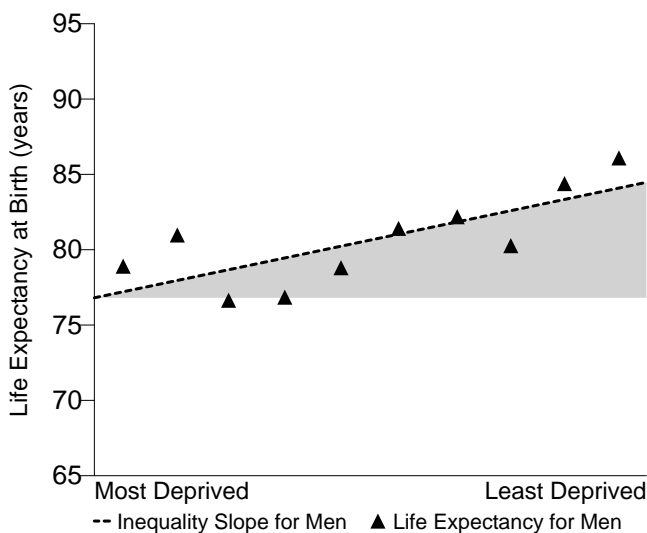
The map shows differences in deprivation levels in this area based on national quintiles (fifths) of the Index of Multiple Deprivation 2010 by Lower Super Output Area. The darkest coloured areas are some of the most deprived areas in England.



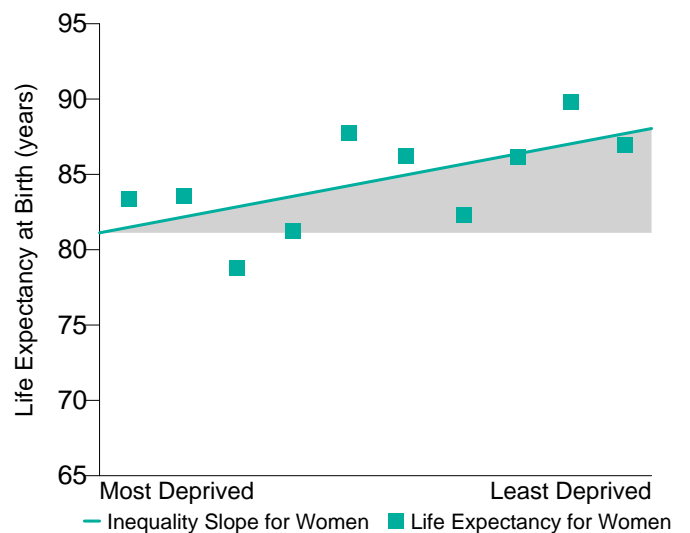
Life Expectancy: inequalities in this local authority

The charts below show life expectancy for men and women in this local authority for 2010-2012. Each chart is divided into deciles (tenths) by deprivation, from the most deprived decile on the left of the chart to the least deprived decile on the right. The steepness of the slope represents the inequality in life expectancy that is related to deprivation in this local area. If there were no inequality in life expectancy as a result of deprivation, the line would be horizontal.

Life Expectancy Gap for Men: 7.7 years

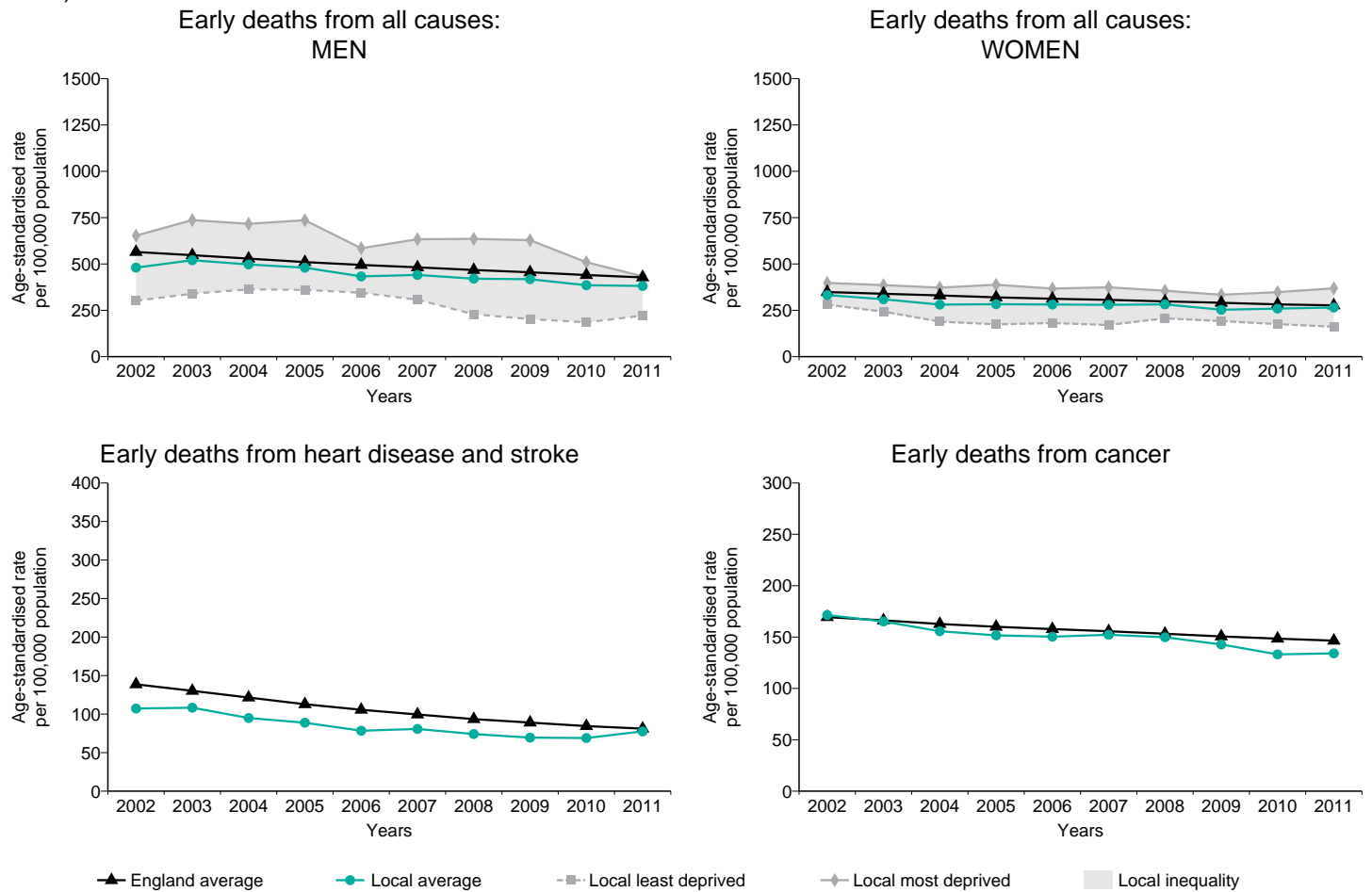


Life Expectancy Gap for Women: 6.9 years



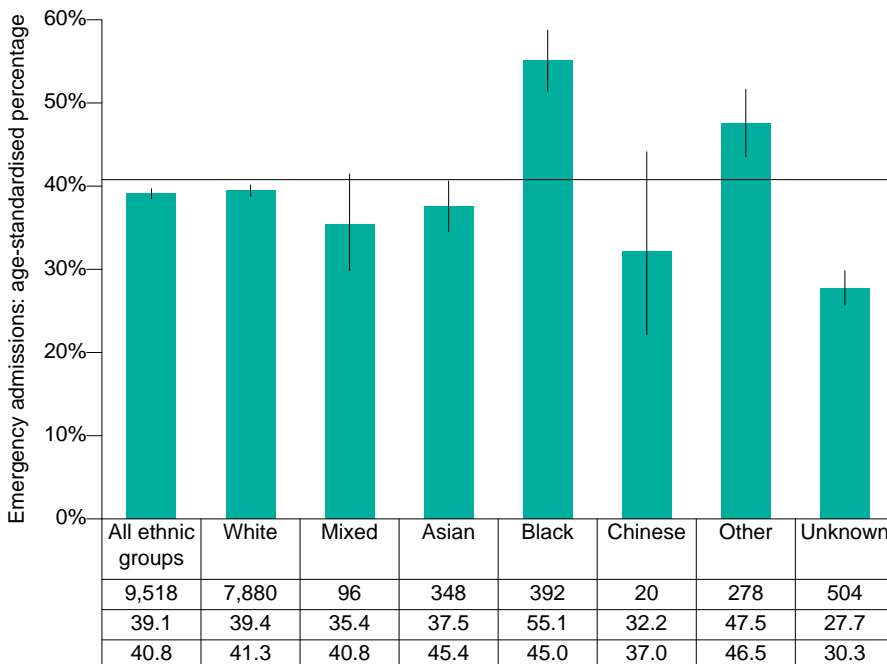
Health inequalities: changes over time

These charts provide a comparison of the changes in early death rates (in people under 75) between this area and all of England. Early deaths from all causes also show the differences between the most and least deprived quintile in this area. (Data points are the midpoints of 3 year averages of annual rates, for example 2005 represents the period 2004 to 2006).



Health inequalities: ethnicity

Percentage of hospital admissions that were emergencies, by ethnic group



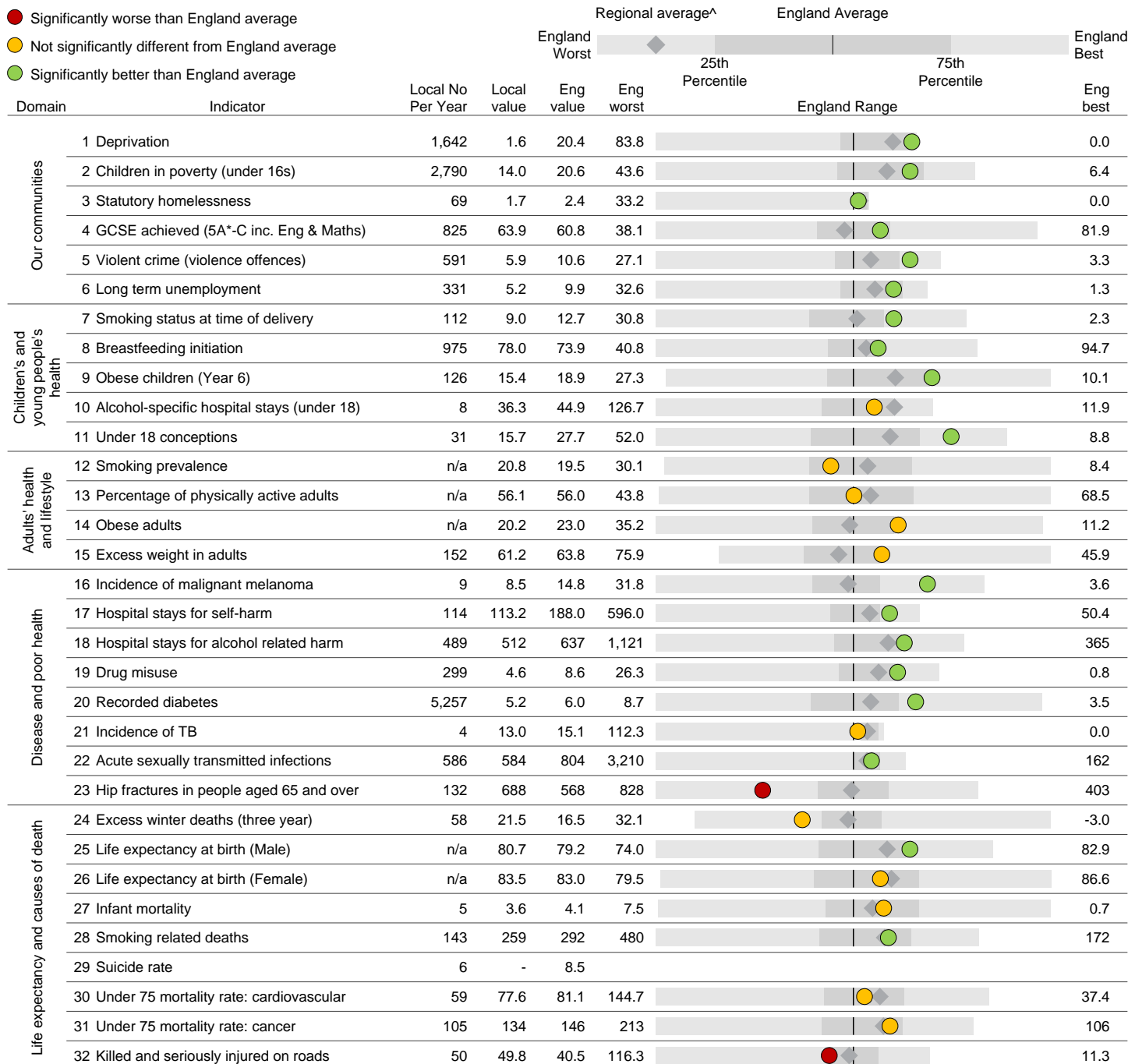
This chart shows the percentage of hospital admissions in 2012/13 that were emergencies for each ethnic group in this area. A high percentage of emergency admissions may reflect some patients not accessing or receiving the care most suited to managing their conditions. By comparing the percentage in each ethnic group in this area with that of the whole population of England (represented by the horizontal line) possible inequalities can be identified.

Legend:
 ■ Hertsmere
 — England average (all ethnic groups)
 | 95% confidence interval

Figures based on small numbers of admissions have been suppressed to avoid any potential disclosure of information about individuals.

Health Summary for Hertsmere

The chart below shows how the health of people in this area compares with the rest of England. This area's result for each indicator is shown as a circle. The average rate for England is shown by the black line, which is always at the centre of the chart. The range of results for all local areas in England is shown as a grey bar. A red circle means that this area is significantly worse than England for that indicator; however, a green circle means that this area is significantly better than England for that indicator.



Indicator Notes

1 % people in this area living in 20% most deprived areas in England, 2010 **2** % children (under 16) in families receiving means-tested benefits & low income, 2011 **3** Crude rate per 1,000 households, 2012/13 **4** % key stage 4, 2012/13 **5** Recorded violence against the person crimes, crude rate per 1,000 population, 2012/13 **6** Crude rate per 1,000 population aged 16-64, 2013 **7** % of women who smoke at time of delivery, 2012/13 **8** % of all mothers who breastfeed their babies in the first 48hrs after delivery, 2012/13 **9** % school children in Year 6 (age 10-11), 2012/13 **10** Persons under 18 admitted to hospital due to alcohol-specific conditions, crude rate per 100,000 population, 2010/11 to 2012/13 (pooled) **11** Under-18 conception rate per 1,000 females aged 15-17 (crude rate) 2012 **12** % adults aged 18 and over, 2012 **13** % adults achieving at least 150 mins physical activity per week, 2012 **14** % adults classified as obese, Active People Survey 2012 **15** % adults classified as overweight or obese, Active People Survey 2012 **16** Directly age standardised rate per 100,000 population, aged under 75, 2009-2011 **17** Directly age sex standardised rate per 100,000 population, 2012/13 **18** The number of admissions involving an alcohol-related primary diagnosis or an alcohol-related external cause, directly age standardised rate per 100,000 population, 2012/13 **19** Estimated users of opiate and/or crack cocaine aged 15-64, crude rate per 1,000 population, 2010/11 **20** % people on GP registers with a recorded diagnosis of diabetes 2012/13 **21** Crude rate per 100,000 population, 2010-2012 **22** Crude rate per 100,000 population, 2012 (chlamydia screening coverage may influence rate) **23** Directly age and sex standardised rate of emergency admissions, per 100,000 population aged 65 and over, 2012/13 **24** Ratio of excess winter deaths (observed winter deaths minus expected deaths based on non-winter deaths) to average non-winter deaths 1.08.09-31.07.12 **25** At birth, 2010-2012 **26** At birth, 2010-2012 **27** Rate per 1,000 live births, 2010-2012 **28** Directly age standardised rate per 100,000 population aged 35 and over, 2010-2012 **29** Directly age standardised mortality rate from suicide and injury of undetermined intent per 100,000 population, 2010-2012 **30** Directly age standardised rate per 100,000 population aged under 75, 2010-2012 **31** Directly age standardised rate per 100,000 population aged under 75, 2010-2012 **32** Rate per 100,000 population, 2010-2012 ^ "Regional" refers to the former government regions.

More information is available at www.healthprofiles.info Please send any enquiries to healthprofiles@phe.gov.uk

© Crown copyright, 2014. You may re-use this information (not including logos) free of charge in any format or medium, under the terms of the Open Government Licence. To view this licence, visit www.nationalarchives.gov.uk/doc/open-government-licence