

**LEGEND**

- Site boundary
- Study area (2km)

# LDĀDESIGN

PROJECT TITLE  
**HILFIELD SOLAR FARM AND BATTERY STORAGE**

DRAWING TITLE  
**Figure 1: Site Location**

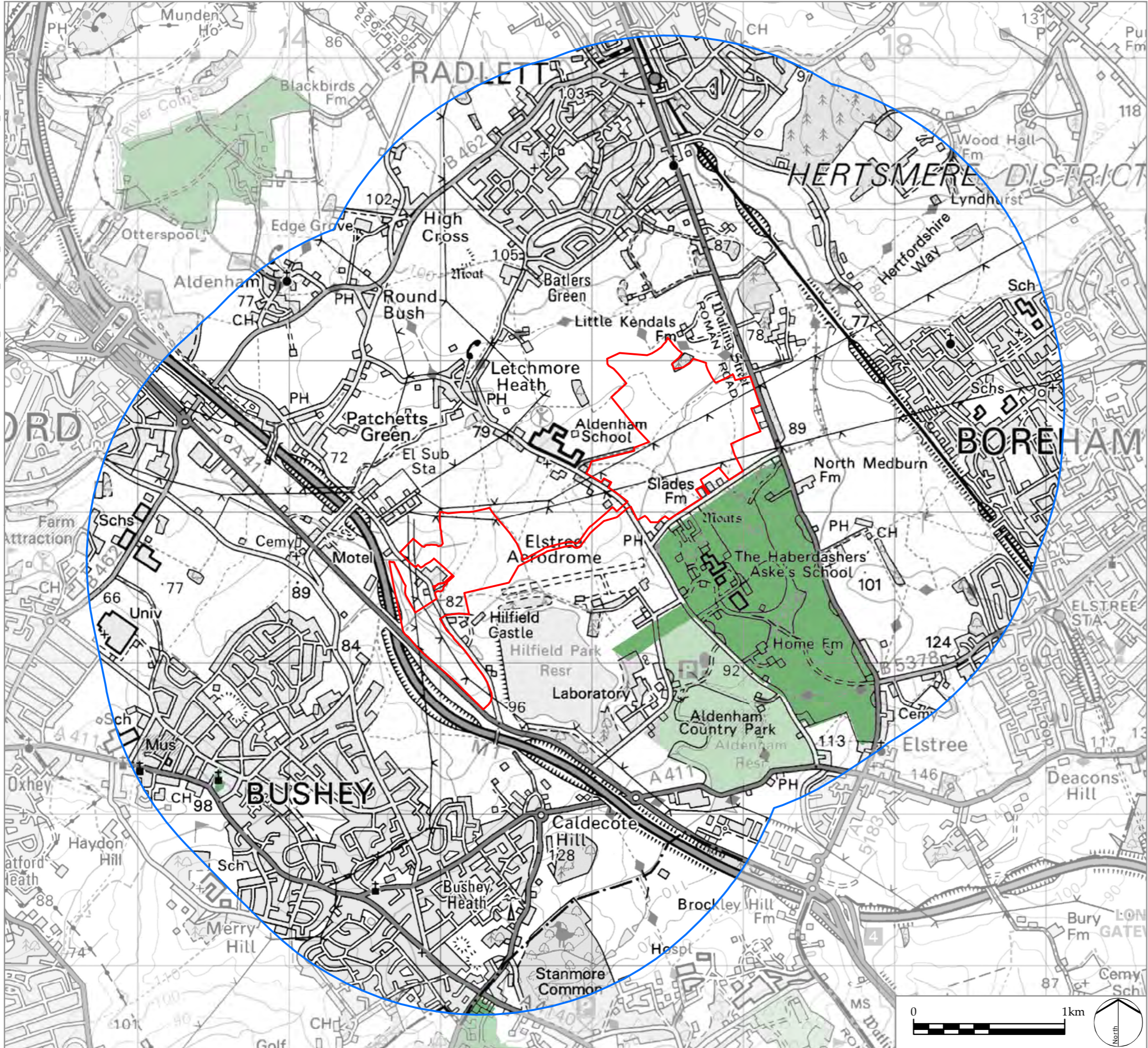
ISSUED BY	Oxford	T: 01865 887050
DATE	Nov 2020	DRAWN SG
SCALE @A3	1:25,000	CHECKED WB
STATUS	Final	APPROVED BC

**DWG. NO. 7533\_001\_B**

No dimensions are to be scaled from this drawing.  
 All dimensions are to be checked on site.  
 Area measurements for indicative purposes only.

© LDA Design Consulting Ltd. Quality Assured to BS EN ISO 9001 : 2015





LEGEND

- Site boundary
- Study area (2km)
- Registered Park and Garden
- Country Parks

NOTE: All of study area within Metropolitan Green Belt and Watling Chase Community Forest

# LD A DESIGN

PROJECT TITLE  
HILFIELD SOLAR FARM AND  
BATTERY STORAGE

DRAWING TITLE  
Figure 2: Landscape Policy and Designations

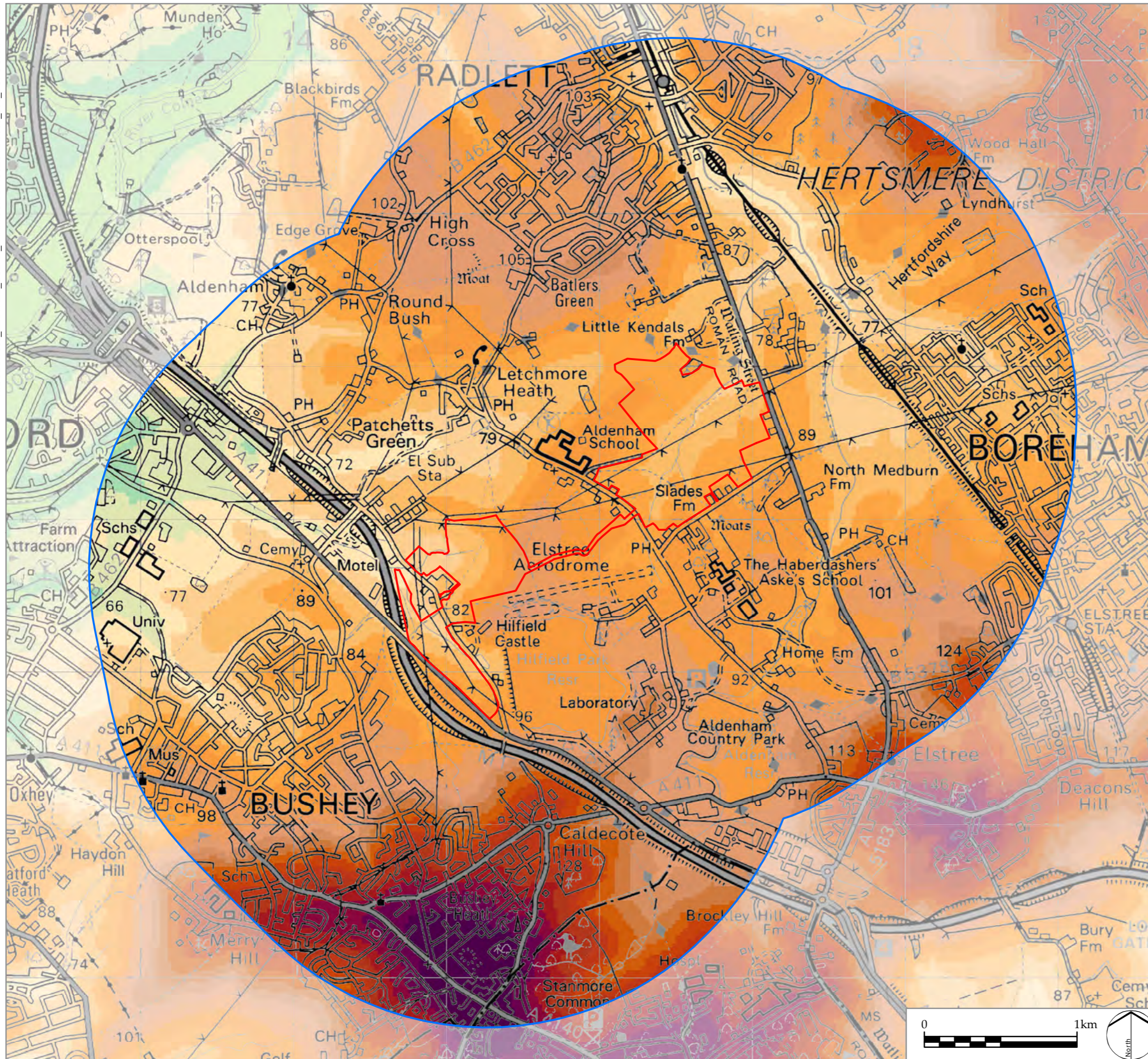
ISSUED BY	Oxford	T: 01865 887050
DATE	Nov 2020	DRAWN SMc
SCALE @A3	1:25,000	CHECKED WB
STATUS	Final	APPROVED BC

**DWG. NO. 7533\_002\_B**

No dimensions are to be scaled from this drawing.  
All dimensions are to be checked on site.  
Area measurements for indicative purposes only.

© LDA Design Consulting Ltd. Quality Assured to BS EN ISO 9001 : 2015

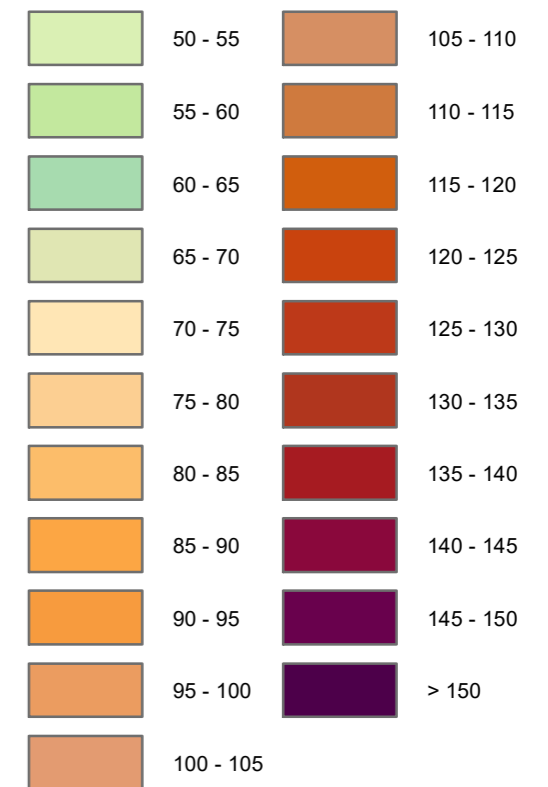
Sources: Ordnance Survey, Natural England, Historic England



LEGEND

-  Site boundary
-  Study area (2km)

Elevation (mAOD)



# LDĀDESIGN

PROJECT TITLE  
HILFIELD SOLAR FARM AND  
BATTERY STORAGE

DRAWING TITLE  
Figure 3: Topography

ISSUED BY	Oxford	T: 01865 887050
DATE	Nov 2020	DRAWN SG
SCALE @A3	1:25,000	CHECKED WB
STATUS	Final	APPROVED BC

**DWG. NO. 7533\_003\_B**

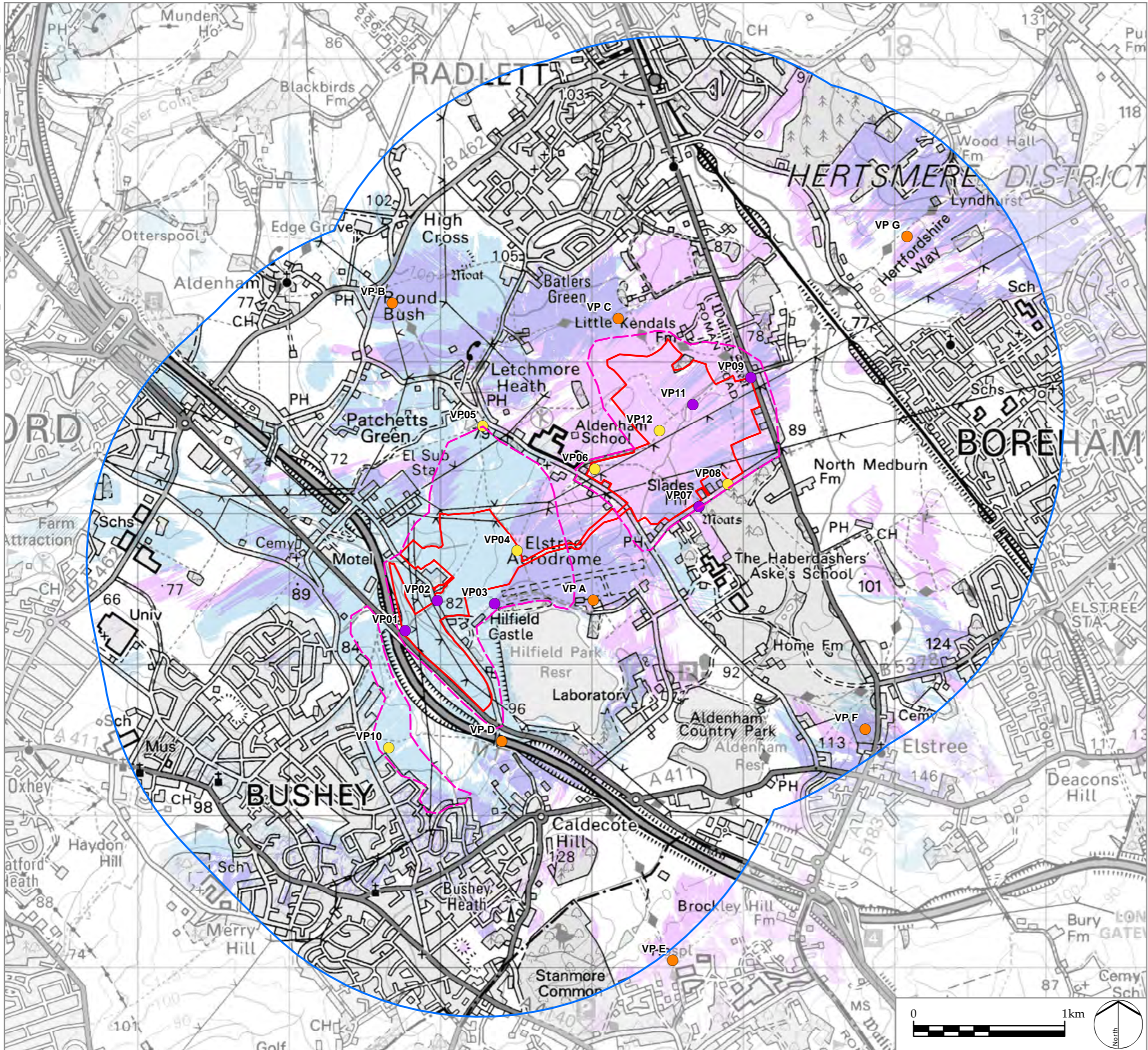
No dimensions are to be scaled from this drawing.  
All dimensions are to be checked on site.  
Area measurements for indicative purposes only.

© LDA Design Consulting Ltd. Quality Assured to BS EN ISO 9001 : 2015

Sources: Ordnance Survey, Nextmap25



X:\JOBS\7533\_ELSTREE\_SOLAR\_FARM\GIS\PROJECTS\7533\_004\_ZTV\_VPS.MXD

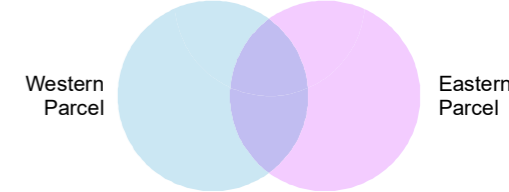


**LEGEND**

- Site boundary
- Study area (2km)
- Zone of Visual Influence (ZVI) (indicative)

- Representative Viewpoint
- Representative Photomontage
- Illustrative Viewpoint

Zone of Theoretical Visibility (ZTV) (computer generated) - based on panel height of 3.0m



This drawing is based upon computer generated Zone of Theoretical Visibility (ZTV) studies produced using the viewshed routine in the ESRI ArcGIS Suite. The areas shown are the maximum theoretical visibility, taking into account topography, vegetation and buildings which have been included in the model with the heights obtained from a LiDAR digital surface model.

Due to its resolution, the surface model does not take into account every localised feature such as walls, small hedgerows or small trees and therefore only gives an impression of the extent of visibility.

The ZTV includes an adjustment that allows for Earth's curvature and light refraction. It is based on LiDAR terrain data with a 2m<sup>2</sup> resolution.

# LDĀ DESIGN

PROJECT TITLE  
**HILFIELD SOLAR FARM AND BATTERY STORAGE**

DRAWING TITLE  
**Figure 4: Zone of Theoretical Visibility (ZTV), Visual Influence (ZVI) and Viewpoint Locations**

ISSUED BY	Oxford	T: 01865 887050
DATE	Nov 2020	DRAWN SG
SCALE @A3	1:25,000	CHECKED WB
STATUS	Final	APPROVED BC

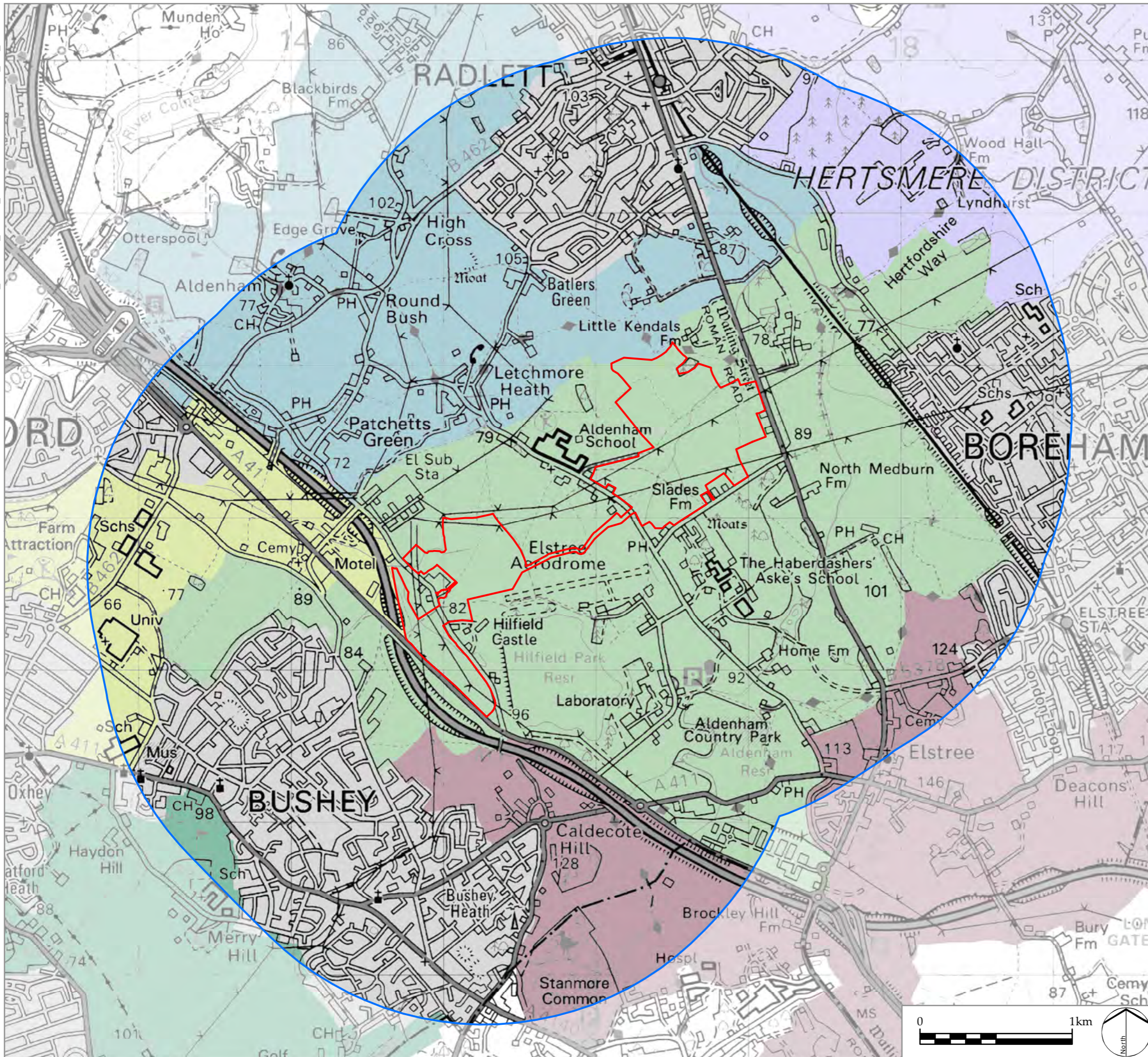
**DWG. NO. 7533\_004\_B**

No dimensions are to be scaled from this drawing.  
 All dimensions are to be checked on site.  
 Area measurements for indicative purposes only.

© LDA Design Consulting Ltd. Quality Assured to BS EN ISO 9001 : 2015

Sources: Ordnance Survey





LEGEND

- Site boundary
- Study area (2km)
- Landscape Character Areas**
- Aldenham Plateau
- Borehamwood Plateau
- Bushey Hill Pastures
- Bushey Swards
- Elstree Ridge and Slopes
- High Canons Valleys and Ridges
- Urban

# LD A DESIGN

PROJECT TITLE  
**HILFIELD SOLAR FARM AND BATTERY STORAGE**

DRAWING TITLE  
**Figure 5: Landscape Character Assessment**

ISSUED BY	Oxford	T: 01865 887050
DATE	Nov 2020	DRAWN SG
SCALE @A3	1:25,000	CHECKED WB
STATUS	Final	APPROVED BC

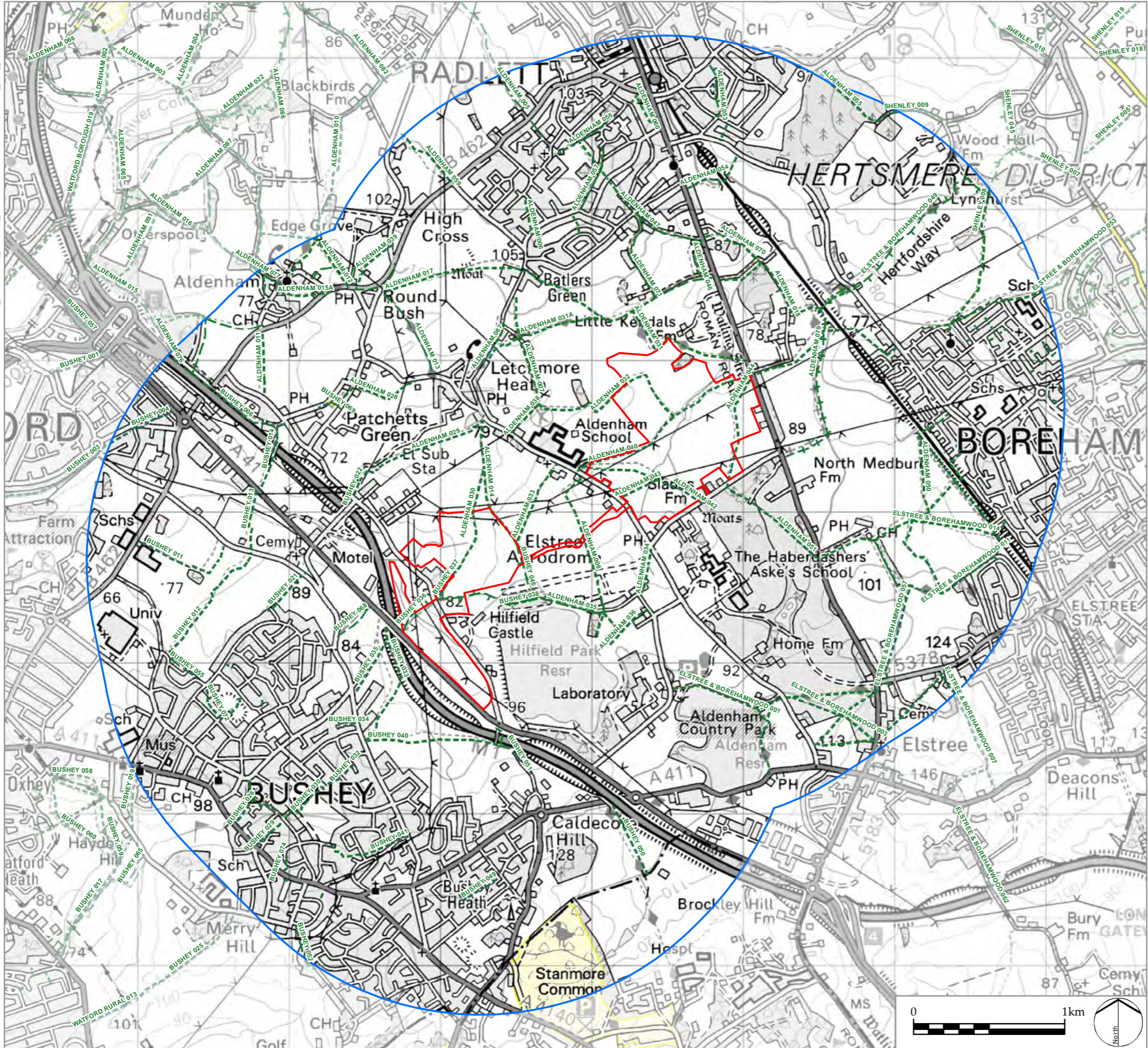
**DWG. NO. 7533\_005\_B**

No dimensions are to be scaled from this drawing.  
 All dimensions are to be checked on site.  
 Area measurements for indicative purposes only.

© LDA Design Consulting Ltd. Quality Assured to BS EN ISO 9001 : 2015

Sources: Ordnance Survey, Hertfordshire County Council





LEGEND

- Site boundary
- Study area (2km)
- CRoW Open Access Land
- Bridleway
- Byway
- Footpath
- Restricted Byway

# LD A DESIGN

PROJECT TITLE  
**HILFIELD SOLAR FARM AND BATTERY STORAGE**

DRAWING TITLE  
**Figure 6: Accessible Landscapes and Public Rights of Way**

ISSUED BY	Oxford	T: 01865 887050
DATE	Nov 2020	DRAWN SG
SCALE @A3	1:25,000	CHECKED WB
STATUS	Final	APPROVED BC

**DWG. NO. 7533\_006\_B**

No dimensions are to be scaled from this drawing.  
 All dimensions are to be checked on site.  
 Area measurements for indicative purposes only.

© LDA Design Consulting Ltd. Quality Assured to BS EN ISO 9001 : 2015

Sources: Ordnance Survey, Natural England